

Product datasheet

Anti-Human IgG antibody [EPR12700] - BSA and Azide free ab250451

Recombinant RabMAb

8 Images

Overview

Product name	Anti-Human IgG antibody [EPR12700] - BSA and Azide free
Description	Rabbit monoclonal [EPR12700] to Human IgG - BSA and Azide free
Host species	Rabbit
Tested applications	Suitable for: ELISA, IHC-P, WB
Species reactivity	Reacts with: Human
Immunogen	Full length native protein (purified) corresponding to Human Human IgG. Isolated from a pool of normal Human sera.
General notes	<p>ab250451 is the carrier-free version of ab181236.</p> <p>Our carrier-free antibodies are typically supplied in a PBS-only formulation, purified and free of BSA, sodium azide and glycerol. The carrier-free buffer and high concentration allow for increased conjugation efficiency.</p> <p>This conjugation-ready format is designed for use with fluorochromes, metal isotopes, oligonucleotides, and enzymes, which makes them ideal for antibody labelling, functional and cell-based assays, flow-based assays (e.g. mass cytometry) and Multiplex Imaging applications.</p> <p>Use our conjugation kits for antibody conjugates that are ready-to-use in as little as 20 minutes with <1 minute hands-on-time and 100% antibody recovery: available for fluorescent dyes, HRP, biotin and gold.</p> <p>This product is compatible with the Maxpar[®] Antibody Labeling Kit from Fluidigm, without the need for antibody preparation. Maxpar[®] is a trademark of Fluidigm Canada Inc.</p> <p>This product is a recombinant monoclonal antibody, which offers several advantages including:</p> <ul style="list-style-type: none"> - High batch-to-batch consistency and reproducibility - Improved sensitivity and specificity - Long-term security of supply - Animal-free production <p>For more information see here.</p> <p>Our RabMAb[®] technology is a patented hybridoma-based technology for making rabbit monoclonal antibodies. For details on our patents, please refer to RabMAb[®] patents.</p>

Properties

Form	Liquid
Storage instructions	Shipped at 4°C. Store at +4°C. Do Not Freeze.
Storage buffer	pH: 7.2 Constituent: PBS
Carrier free	Yes
Purity	Protein A purified
Clonality	Monoclonal
Clone number	EPR12700
Isotype	IgG

Applications

The Abpromise guarantee Our **Abpromise guarantee** covers the use of ab250451 in the following tested applications.

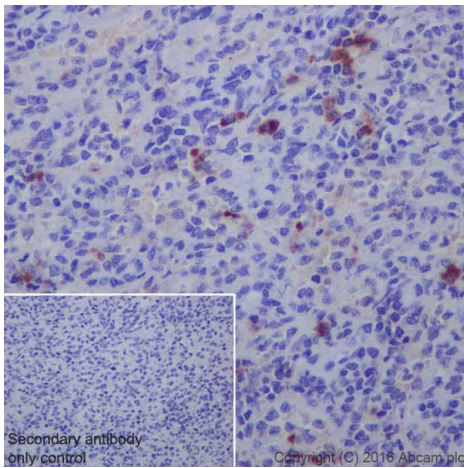
The application notes include recommended starting dilutions; optimal dilutions/concentrations should be determined by the end user.

Application	Abreviews	Notes
ELISA		Use at an assay dependent concentration. Please look at the product page for <u>ab201842</u> for information on how this clone performs in an ELISA.
IHC-P		Use at an assay dependent concentration. See <u>IHC antigen retrieval protocols</u> .
WB		Use at an assay dependent concentration. Detects a band of approximately 52-58 kDa (predicted molecular weight: 36, 41 kDa).

Target

Relevance	IgG is a monomeric immunoglobulin, built of two heavy chains gamma and two light chains. Each molecule has two antigen binding sites. This is the most abundant immunoglobulin and is approximately equally distributed in blood and in tissue liquids, constituting 75% of serum immunoglobulins in humans. This is the only isotype that can pass through the human placenta, thereby providing protection to the fetus in its first weeks of life before its own immune system has developed. It can bind to many kinds of pathogens, for example viruses, bacteria, and fungi, and protects the body against them by complement activation (classic pathway), opsonization for phagocytosis and neutralisation of their toxins. There are 4 subclasses: IgG1 (66%), IgG2 (23%), IgG3 (7%) and IgG4 (4%).
Cellular localization	Cell Membrane and Secreted

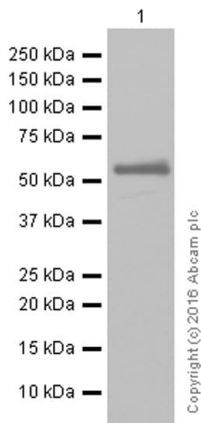
Images



Immunohistochemistry (Formalin/PFA-fixed paraffin-embedded sections) - Anti-Human IgG antibody [EPR12700] - BSA and Azide free (ab250451)

This data was developed using [ab181236](#), the same antibody clone in a different buffer formulation.

Immunohistochemistry (Formalin/PFA-fixed paraffin-embedded sections) analysis of human spleen tissue sections labeling Human IgG with purified [ab181236](#) at 1/100 dilution (1.3 µg/ml). Heat mediated antigen retrieval was performed using EDTA Buffer, PH9. Tissue was counterstained with Hematoxylin. [ab97051](#) Goat Anti-Rabbit IgG H&L (HRP) secondary antibody was used at 1/500 dilution. PBS instead of the primary antibody was used as the negative control.



Western blot - Anti-Human IgG antibody [EPR12700] - BSA and Azide free (ab250451)

Anti-Human IgG antibody [EPR12700] ([ab181236](#)) at 1/10000 dilution (purified) + Human tonsil lysate at 20 µg

Secondary

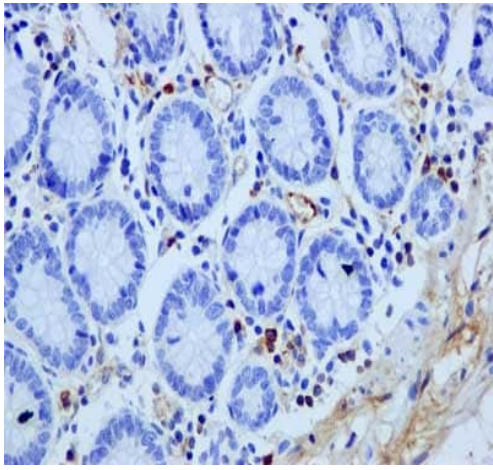
Anti-Rabbit IgG (HRP), specific to the non-reduced form of IgG at 1/10000 dilution

Predicted band size: 36, 41 kDa

Observed band size: 52 kDa

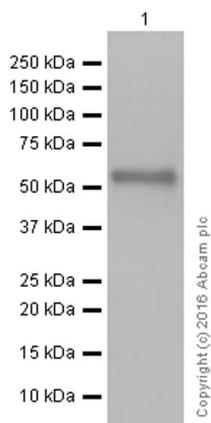
This data was developed using [ab181236](#), the same antibody clone in a different buffer formulation.

Blocking and dilution buffer: 5% NFDM/TBST.



Immunohistochemistry (Formalin/PFA-fixed paraffin-embedded sections) - Anti-Human IgG antibody [EPR12700] - BSA and Azide free (ab250451)

This data was developed using [ab181236](#), the same antibody clone in a different buffer formulation. Immunohistochemical analysis of paraffin-embedded Human colon tissue labeling Human IgG with unpurified [ab181236](#) at 1/250 dilution, dilution followed by pre-diluted HRP-conjugated secondary antibody and counter-stained with Hematoxylin.



Western blot - Anti-Human IgG antibody [EPR12700] - BSA and Azide free (ab250451)

Anti-Human IgG antibody [EPR12700] ([ab181236](#)) at 1/2000 dilution (purified) + Human spleen tissue lysate at 20 µg

Secondary

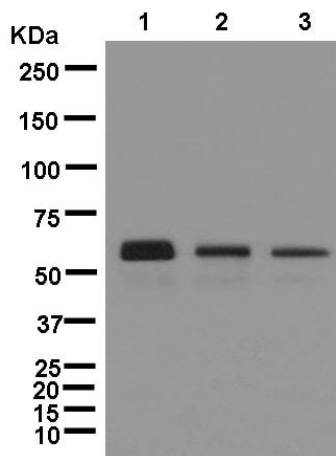
Anti-Rabbit IgG (HRP), specific to the non-reduced form of IgG at 1/2000 dilution

Predicted band size: 36, 41 kDa

Observed band size: 52 kDa

This data was developed using [ab181236](#), the same antibody clone in a different buffer formulation.

Blocking and dilution buffer: 5% NFDM/TBST.



Western blot - Anti-Human IgG antibody
[EPR12700] - BSA and Azide free (ab250451)

All lanes : Anti-Human IgG antibody [EPR12700] ([ab181236](#)) at 1/10000 dilution (unpurified)

Lane 1 : Human plasma lysate

Lane 2 : Human thymus lysate

Lane 3 : Human tonsil lysate

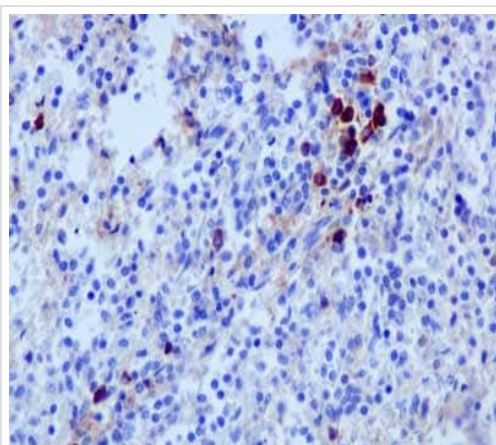
Lysates/proteins at 10 µg per lane.

Secondary

All lanes : Anti-Rabbit IgG (HRP), specific to the non-reduced form of IgG at 1/1000 dilution

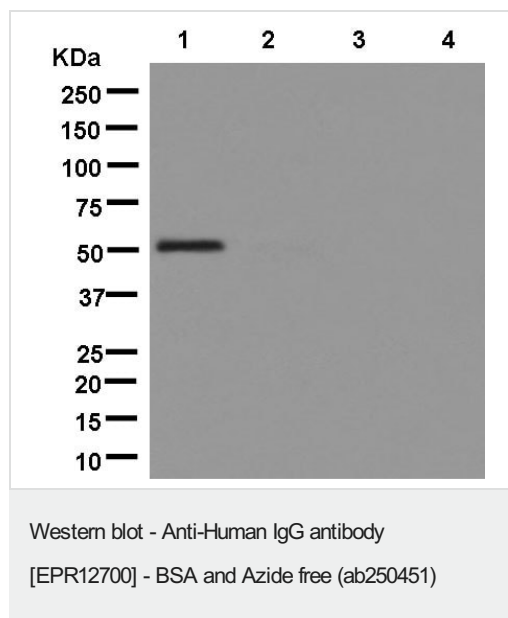
Predicted band size: 36, 41 kDa

This data was developed using [ab181236](#), the same antibody clone in a different buffer formulation.



Immunohistochemistry (Formalin/PFA-fixed paraffin-embedded sections) - Anti-Human IgG antibody
[EPR12700] - BSA and Azide free (ab250451)

This data was developed using [ab181236](#), the same antibody clone in a different buffer formulation. Immunohistochemical analysis of paraffin-embedded Human spleen tissue labeling Human IgG with unpurified [ab181236](#) at 1/250 dilution, dilution followed by pre-diluted HRP-conjugated secondary antibody and counter-stained with Hematoxylin.



All lanes : Anti-Human IgG antibody [EPR12700] ([ab181236](#)) at 1/2000 dilution (unpurified)

Lane 1 : Human IgG

Lane 2 : Human IgM

Lane 3 : Human IgA

Lane 4 : Human IgD

Lysates/proteins at 0.01 µg per lane.

Secondary

All lanes : Goat Anti-Rabbit IgG, (H+L), Peroxidase conjugated at 1/1000 dilution

Predicted band size: 36, 41 kDa

This data was developed using [ab181236](#), the same antibody clone in a different buffer formulation.

Why choose a recombinant antibody?



Research with confidence
Consistent and reproducible results



Long-term and scalable supply
Recombinant technology



Success from the first experiment
Confirmed specificity



Ethical standards compliant
Animal-free production

Anti-Human IgG antibody [EPR12700] - BSA and Azide free (ab250451)

Please note: All products are "FOR RESEARCH USE ONLY. NOT FOR USE IN DIAGNOSTIC PROCEDURES"

Our Abpromise to you: Quality guaranteed and expert technical support

- Replacement or refund for products not performing as stated on the datasheet
- Valid for 12 months from date of delivery
- Response to your inquiry within 24 hours
- We provide support in Chinese, English, French, German, Japanese and Spanish
- Extensive multi-media technical resources to help you
- We investigate all quality concerns to ensure our products perform to the highest standards

If the product does not perform as described on this datasheet, we will offer a refund or replacement. For full details of the Abpromise, please visit <https://www.abcam.com/abpromise> or contact our technical team.

Terms and conditions

- Guarantee only valid for products bought direct from Abcam or one of our authorized distributors