

Product datasheet

Anti-Human Kappa Light Chain antibody [RM126] ab195576

Recombinant

[3 Images](#)

Overview

Product name	Anti-Human Kappa Light Chain antibody [RM126]
Description	Rabbit monoclonal [RM126] to Human Kappa Light Chain
Host species	Rabbit
Specificity	ab195576 reacts to the kappa light chain of human immunoglobulins. No cross reactivity with the lambda light chain, mouse IgG, rat IgG, or goat IgG.
Tested applications	Suitable for: IHC-P, ELISA
Species reactivity	Reacts with: Human
Immunogen	Full length native protein (purified) corresponding to Human Human Kappa Light Chain. Human IgG purified from Human plasma.
Positive control	Human tonsil tissue.

Properties

Form	Liquid
Storage instructions	Shipped at 4°C. Store at +4°C short term (1-2 weeks). Upon delivery aliquot. Store at -20°C long term. Avoid freeze / thaw cycle.
Storage buffer	Preservative: 0.09% Sodium azide Constituents: 1% BSA, 48% PBS, 50% Glycerol (glycerin, glycerine)
Purity	Protein A purified
Purification notes	ab195576 was purified from an animal origin-free culture supernatant.
Clonality	Monoclonal
Clone number	RM126
Isotype	IgG

Applications

The Abpromise guarantee

Our **Abpromise guarantee** covers the use of ab195576 in the following tested applications.

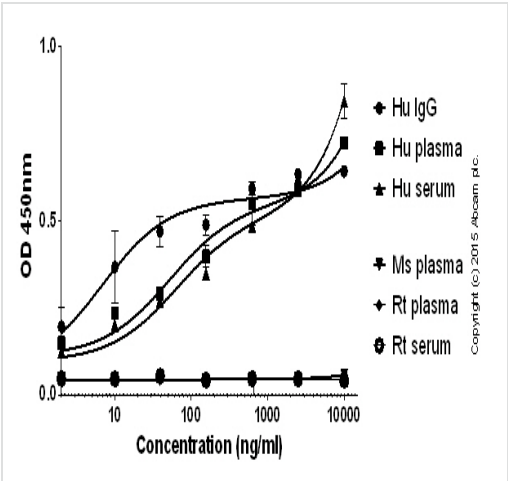
The application notes include recommended starting dilutions; optimal dilutions/concentrations should be determined by the end user.

Application	Abreviews	Notes
IHC-P		Use a concentration of 0.5 - 2 µg/ml.
ELISA		Use a concentration of 0.05 - 0.2 µg/ml.

Target

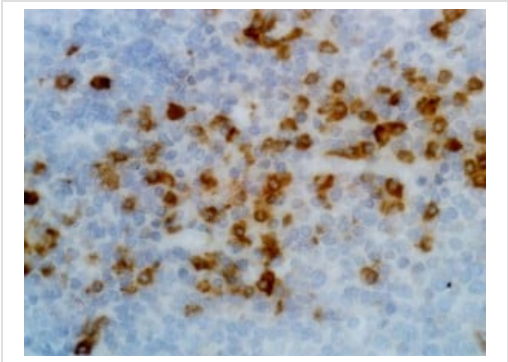
Cellular localization Secreted

Images



ELISA - Anti-Human Kappa Light Chain antibody [RM126] (ab195576)

The wells were coated with ab195576 at 0.5µg/ml at 50µl/well overnight at 4°C, followed by a 5% BSA blocking step for 2h RT. Human IgG ([ab98981](#)) was then added starting at 10 µg/ml and plasma/serum at 1:10 and gradually diluted 1:4, 50µl/well for 2h. [Ab201484](#) was then added at 1:10,000 dilution, 50µl/well for 2h. A HRP-streptavidin ([ab7403](#)) was used at 1:10,000 dilution for 1h.



Immunohistochemistry (Formalin/PFA-fixed paraffin-embedded sections) - Anti-Human Kappa Light Chain antibody [RM126] (ab195576)

Immunohistochemical analysis of Human tonsil tissue labeling Human IgG Kappa Light Chain with ab195576 at 2 µg/ml.

Why choose a recombinant antibody?



Research with confidence
Consistent and reproducible results



Long-term and scalable supply
Recombinant technology



Success from the first experiment
Confirmed specificity



Ethical standards compliant
Animal-free production

Anti-Human Kappa Light Chain antibody [RM126]
(ab195576)

Please note: All products are "FOR RESEARCH USE ONLY. NOT FOR USE IN DIAGNOSTIC PROCEDURES"

Our Abpromise to you: Quality guaranteed and expert technical support

- Replacement or refund for products not performing as stated on the datasheet
- Valid for 12 months from date of delivery
- Response to your inquiry within 24 hours
- We provide support in Chinese, English, French, German, Japanese and Spanish
- Extensive multi-media technical resources to help you
- We investigate all quality concerns to ensure our products perform to the highest standards

If the product does not perform as described on this datasheet, we will offer a refund or replacement. For full details of the Abpromise, please visit <https://www.abcam.com/abpromise> or contact our technical team.

Terms and conditions

- Guarantee only valid for products bought direct from Abcam or one of our authorized distributors