

## Product datasheet

# Anti-Human Nucleoli antibody [NM95] - Nucleolar Marker ab190710

Recombinant

★★★★★ **1 Abreviews** **15 References** [6 Images](#)

### Overview

<b>Product name</b>	Anti-Human Nucleoli antibody [NM95] - Nucleolar Marker
<b>Description</b>	Mouse monoclonal [NM95] to Human Nucleoli - Nucleolar Marker
<b>Host species</b>	Mouse
<b>Specificity</b>	- Recommend: ICC[Hu], Flow[Hu], WB[Hu], IHC-P[Hu] - Do not recommend: WB[Ms, Rt], IHC-P[Ms,Rt]
<b>Tested applications</b>	<b>Suitable for:</b> ICC/IF, WB, IHC-P, Flow Cyt (Intra)
<b>Species reactivity</b>	<b>Reacts with:</b> Human
<b>Immunogen</b>	Tissue, cells or virus corresponding to Human Nucleoli. Nuclei of myeloid leukemia biopsy cells
<b>Positive control</b>	WB: HeLa and K562 whole cell lysate. IHC-P: Human kidney tissue; Human colon cancer tissue. ICC/IF: K562 and HeLa cells. Flow Cyt (Intra): K562 cells.
<b>General notes</b>	<p>This product has switched from a hybridoma to recombinant production method on 22nd July 2021.</p> <p>This antibody clone is manufactured by Abcam. If you require a custom buffer formulation or conjugation for your experiments, please contact <a href="mailto:orders@abcam.com">orders@abcam.com</a>.</p> <p>This product is a recombinant monoclonal antibody, which offers several advantages including:</p> <ul style="list-style-type: none"> <li>- High batch-to-batch consistency and reproducibility</li> <li>- Improved sensitivity and specificity</li> <li>- Long-term security of supply</li> <li>- Animal-free production</li> </ul> <p>For more information <a href="#">see here</a>.</p>

### Properties

<b>Form</b>	Liquid
<b>Storage instructions</b>	Shipped at 4°C. Store at +4°C short term (1-2 weeks). Upon delivery aliquot. Store at -20°C long term. Avoid freeze / thaw cycle.
<b>Storage buffer</b>	pH: 7.20 Preservative: 0.01% Sodium azide

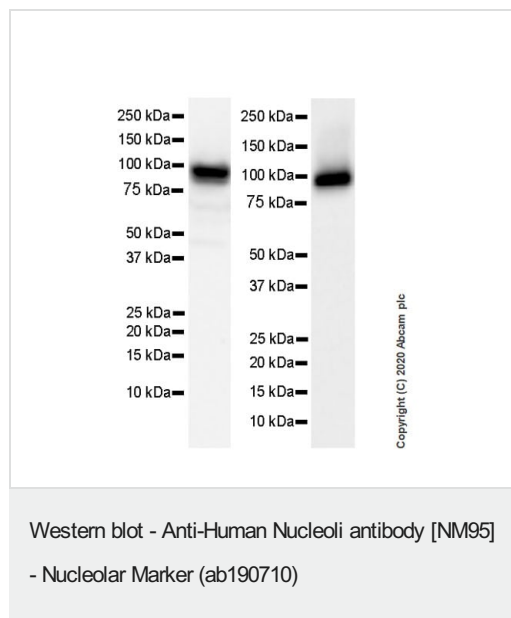
	Constituents: 0.05% BSA, 59% PBS, 40% Glycerol (glycerin, glycerine)
<b>Purity</b>	Protein A purified
<b>Clonality</b>	Monoclonal
<b>Clone number</b>	NM95
<b>Isotype</b>	IgG1

## Applications

**The Abpromise guarantee** Our **Abpromise guarantee** covers the use of ab190710 in the following tested applications. The application notes include recommended starting dilutions; optimal dilutions/concentrations should be determined by the end user.

Application	Abreviews	Notes
<b>ICC/IF</b>		1/50 - 1/100.
<b>WB</b>		1/1000 - 1/10000. Predicted molecular weight: 100 kDa.
<b>IHC-P</b>	★★★★★ (1)	Use a concentration of 0.5 - 1 µg/ml. Perform heat mediated antigen retrieval with citrate buffer pH 6 before commencing with IHC staining protocol.
<b>Flow Cyt (Intra)</b>		1/1000.

## Images



**All lanes** : Anti-Human Nucleoli antibody [NM95] - Nucleolar Marker (ab190710) at 1/1000 dilution

**Lane 1** : HeLa (human cervix adenocarcinoma epithelial cell), whole cell lysate

**Lane 2** : K562 (human chronic myelogenous leukemia lymphoblast), whole cell lysate

Lysates/proteins at 20 µg per lane.

### Secondary

**All lanes** : Peroxidase-Conjugated Goat anti-Mouse IgG (H+L) at 1/10000 dilution

**Predicted band size:** 100 kDa

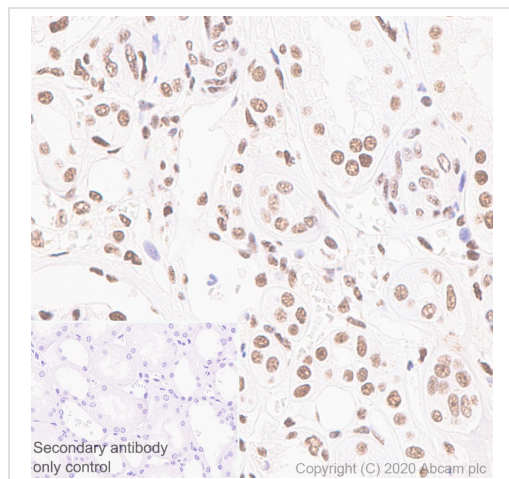
Exposure Times

**lane 1:** 3 seconds

**lane 2:** 5 seconds

5% NFDm/TBST

Lysates were made freshly and used in WB immediately to minimize protein degradation.



Immunohistochemistry (Formalin/PFA-fixed paraffin-embedded sections) - Anti-Human Nucleoli antibody [NM95] - Nucleolar Marker (ab190710)

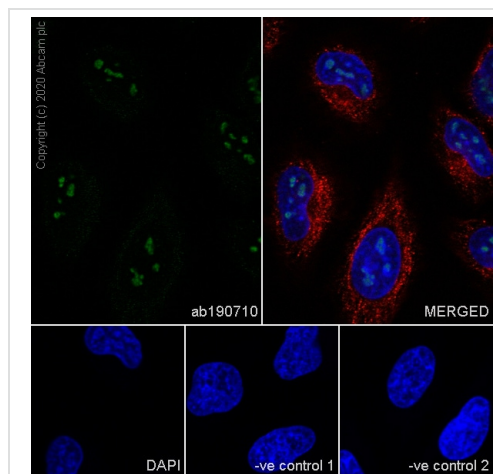
Immunohistochemical analysis of paraffin-embedded human kidney tissue labelling Human Nucleoli with ab190710 at 1/1000 dilution, followed by secondary antibody the ready to use Goat Anti-Mouse IgG H&L (HRP polymer) ([ab214879](#)). Nuclear staining in human kidney is observed. Counter stained with Hematoxylin.

Secondary antibody only control: Used PBS instead of primary antibody, secondary antibody is ready to use Goat Anti-Mouse IgG H&L (HRP polymer) ([ab214879](#)).

Heat mediated antigen retrieval with Citrate buffer (pH 6.0, epitope retrieval solution 1) for 20 mins.

The section was incubated with ab190710 for 30 mins at room temperature.

The immunostaining was performed on a Leica Biosystems BOND® RX instrument.



Immunocytochemistry/ Immunofluorescence - Anti-Human Nucleoli antibody [NM95] - Nucleolar Marker (ab190710)

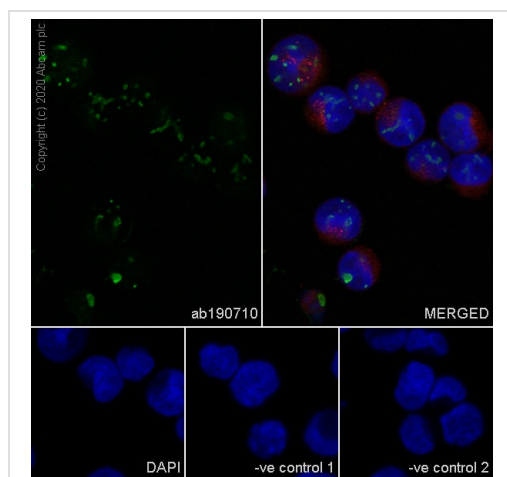
Immunofluorescent analysis of 100% methanol, 0.1% TritonX-100 permeabilized HeLa (Human cervix adenocarcinoma epithelial cell) cells labelling Human Nucleoli with ab190710 at 1/50 dilution, followed by Goat Anti-Mouse IgG H&L (Alexa Fluor® 488) ([ab150113](#)) secondary antibody at 1/1000 dilution (green). Confocal image showing nucleolar staining in HeLa cell line. The nuclear counter stain is DAPI (blue).

Tubulin is detected with Anti-beta Tubulin rabbit monoclonal antibody ([ab179513](#)) at 1/200 dilution, followed by Goat Anti-Rabbit IgG H&L (Alexa Fluor® 594) ([ab150080](#)) secondary antibody at 1/500 dilution (red).

The negative controls are as follows:

-ve control 1: ab190710 at 1/50 dilution, followed by Goat Anti-Rabbit IgG H&L (Alexa Fluor® 594) ([ab150080](#)) secondary at 1/500 dilution.

-ve control 2: Anti-beta Tubulin rabbit monoclonal antibody ([ab179513](#)) at 1/200 dilution, followed by Goat Anti-Mouse IgG H&L (Alexa Fluor® 488) ([ab150113](#)) secondary at 1/1000 dilution.



Immunocytochemistry/ Immunofluorescence - Anti-Human Nucleoli antibody [NM95] - Nucleolar Marker (ab190710)

Immunofluorescent analysis of 100% methanol, 0.1% TritonX-100 permeabilized K562 (Human chronic myelogenous leukemia lymphoblast cell line ) cells labelling Human Nucleoli with ab190710 at 1/50 dilution, followed by Goat Anti-Mouse IgG H&L (Alexa Fluor® 488) (**ab150113**) secondary antibody at 1/1000 dilution (green). Confocal image showing nucleolar staining in K562 cell line. The nuclear counter stain is DAPI (blue).

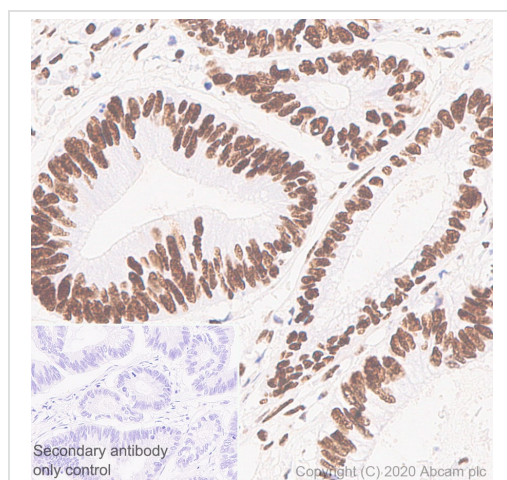
Tubulin is detected with Anti-alpha Tubulin mouse MAb (**ab7291**) at 1/1000 dilution, followed by Goat Anti-Mouse IgG H&L (Alexa Fluor® 594) (**ab150120**) secondary antibody at 1/500 dilution (red).

Tubulin is detected with Anti-beta Tubulin rabbit monoclonal antibody (**ab179513**) at 1/200 dilution, followed by Goat Anti-Rabbit IgG H&L (Alexa Fluor® 594) (**ab150080**) secondary antibody at 1/500 dilution (red).

The negative controls are as follows:

-ve control 1: ab190710 at 1/50 dilution, followed by Goat Anti-Rabbit IgG H&L (Alexa Fluor® 594) (abab150080) secondary at 1/1000 dilution.

-ve control 2: Anti-beta Tubulin rabbit monoclonal antibody (**ab179513**) at 1/200 dilution, followed by Goat Anti-Mouse IgG H&L (Alexa Fluor® 488) (**ab150113**) secondary at 1/1000 dilution.



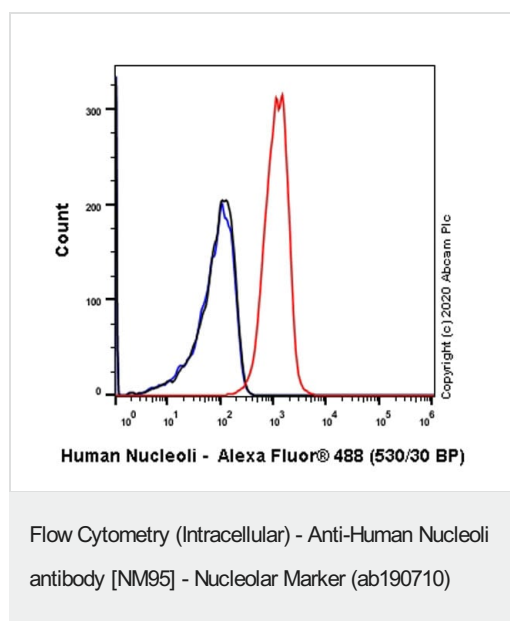
Immunohistochemistry (Formalin/PFA-fixed paraffin-embedded sections) - Anti-Human Nucleoli antibody [NM95] - Nucleolar Marker (ab190710)

Immunohistochemical analysis of paraffin-embedded sections human colon cancer tissue labelling Human Nucleoli with ab190710 at 1/2000 dilution, followed by secondary ready to use Goat Anti-Mouse IgG H&L (HRP polymer) (**ab214879**). Nuclear staining in human colon cancer tissue is observed. Counter stained with Hematoxylin. Heat mediated antigen retrieval was performed using Citrate buffer (pH 6.0, epitope retrieval solution 1) for 20 mins.

Secondary antibody only control: Used PBS instead of primary antibody, secondary antibody is ready to use Goat Anti-Mouse IgG H&L (HRP polymer) (**ab214879**).

The section was incubated with ab190710 for 30 mins at room temperature.

The immunostaining was performed on a Leica Biosystems BOND® RX instrument.



Flow cytometry overlay histogram of 4% paraformaldehyde-fixed, 90% methanol permeabilized K562 (Human chronic myelogenous leukemia lymphoblast) cells labelling Human Nucleoli with ab190710 at 1/1000 dilution (red) compared with a Mouse monoclonal IgG (black) and an unlabelled control (Cell without incubation with primary antibody and secondary antibody) (blue). Goat anti mouse IgG (Alexa Fluor® 488) (**ab150113**), at 1/2000 dilution was used as the secondary antibody.

**Please note:** All products are "FOR RESEARCH USE ONLY. NOT FOR USE IN DIAGNOSTIC PROCEDURES"

### Our Abpromise to you: Quality guaranteed and expert technical support

- Replacement or refund for products not performing as stated on the datasheet
- Valid for 12 months from date of delivery
- Response to your inquiry within 24 hours
- We provide support in Chinese, English, French, German, Japanese and Spanish
- Extensive multi-media technical resources to help you
- We investigate all quality concerns to ensure our products perform to the highest standards

If the product does not perform as described on this datasheet, we will offer a refund or replacement. For full details of the Abpromise, please visit <https://www.abcam.com/abpromise> or contact our technical team.

### Terms and conditions

- Guarantee only valid for products bought direct from Abcam or one of our authorized distributors