


Anti-HYAL3 antibody ab151767

2 Images

Overview

Product name	Anti-HYAL3 antibody
Description	Rabbit polyclonal to HYAL3
Host species	Rabbit
Tested applications	Suitable for: WB, IHC-P
Species reactivity	Reacts with: Human Predicted to work with: Mouse 
Immunogen	A synthetic peptide corresponding to C terminal residues of Human HYAL3 (UniProt: O43820).
Positive control	Human mammary cancer tissue; 22RV, HeLa and V20S cell lysates.
General notes	<p>The Life Science industry has been in the grips of a reproducibility crisis for a number of years. Abcam is leading the way in addressing this with our range of recombinant monoclonal antibodies and knockout edited cell lines for gold-standard validation. Please check that this product meets your needs before purchasing.</p> <p>If you have any questions, special requirements or concerns, please send us an inquiry and/or contact our Support team ahead of purchase. Recommended alternatives for this product can be found below, along with publications, customer reviews and Q&As</p>

Properties

Form	Liquid
Storage instructions	Shipped at 4°C. Upon delivery aliquot and store at -20°C. Avoid repeated freeze / thaw cycles.
Storage buffer	Preservatives: 0.025% Thimerosal (merthiolate), 0.025% Sodium azide Constituents: 0.1% Dibasic monohydrogen sodium phosphate, 0.45% Sodium chloride, 2.5% BSA
Purity	Immunogen affinity purified
Clonality	Polyclonal
Isotype	IgG

Applications

The **Abpromise guarantee** Our **Abpromise guarantee** covers the use of ab151767 in the following tested applications.

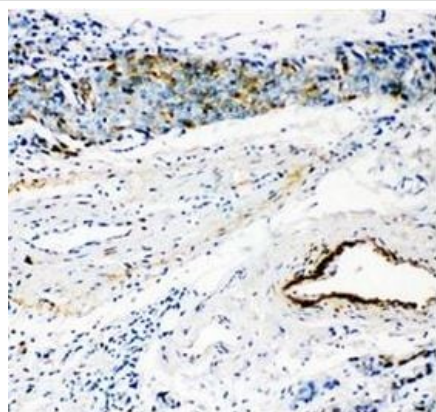
The application notes include recommended starting dilutions; optimal dilutions/concentrations should be determined by the end user.

Application	Abreviews	Notes
WB		Use a concentration of 0.1 - 0.5 µg/ml. Predicted molecular weight: 47 kDa.
IHC-P		Use a concentration of 0.5 - 1 µg/ml. Perform heat mediated antigen retrieval before commencing with IHC staining protocol.

Target

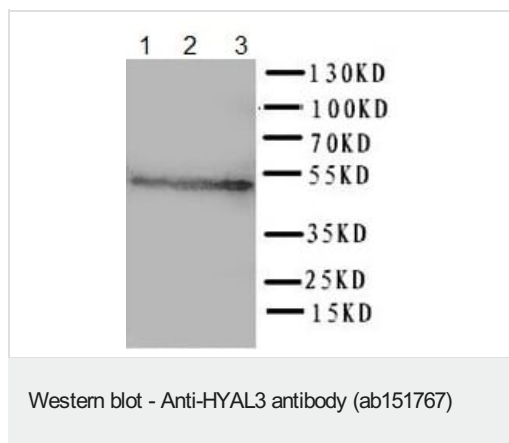
Tissue specificity	Bone marrow, testis and kidney. Isoform 4 is detected in all bladder tumor and prostate tumor cells.
Sequence similarities	Belongs to the glycosyl hydrolase 56 family. Contains 1 EGF-like domain.
Cellular localization	Secreted. Lysosome.

Images



Immunohistochemical analysis of paraffin embedded Human mammary cancer tissue, labeling HYAL3 with ab151767 at 1 µg/ml

Immunohistochemistry (Formalin/PFA-fixed paraffin-embedded sections) - Anti-HYAL3 antibody (ab151767)



All lanes : Anti-HYAL3 antibody (ab151767) at 0.5 µg/ml

Lane 1 : 22RV cell lysate

Lane 2 : HeLa cell lysate

Lane 3 : V20S cell lysate

Predicted band size: 47 kDa

Please note: All products are "FOR RESEARCH USE ONLY. NOT FOR USE IN DIAGNOSTIC PROCEDURES"

Our Abpromise to you: Quality guaranteed and expert technical support

- Replacement or refund for products not performing as stated on the datasheet
- Valid for 12 months from date of delivery
- Response to your inquiry within 24 hours
- We provide support in Chinese, English, French, German, Japanese and Spanish
- Extensive multi-media technical resources to help you
- We investigate all quality concerns to ensure our products perform to the highest standards

If the product does not perform as described on this datasheet, we will offer a refund or replacement. For full details of the Abpromise, please visit <https://www.abcam.com/abpromise> or contact our technical team.

Terms and conditions

- Guarantee only valid for products bought direct from Abcam or one of our authorized distributors