



Anti-HYPE antibody ab237521

4 Images

Overview

Product name	Anti-HYPE antibody
Description	Rabbit polyclonal to HYPE
Host species	Rabbit
Tested applications	Suitable for: WB, IHC-P, ICC/IF
Species reactivity	Reacts with: Rat, Human
Immunogen	Recombinant fragment corresponding to Human HYPE aa 50-200. Database link: Q9BVA6  Run BLAST with  Run BLAST with
Positive control	WB: A549 and HeLa whole cell lysates; Rat kidney lysate. IHC-P: Human small intestine and kidney tissue. ICC/IF: PC-3 cells.
General notes	<p>The Life Science industry has been in the grips of a reproducibility crisis for a number of years. Abcam is leading the way in addressing this with our range of recombinant monoclonal antibodies and knockout edited cell lines for gold-standard validation. Please check that this product meets your needs before purchasing.</p> <p>If you have any questions, special requirements or concerns, please send us an inquiry and/or contact our Support team ahead of purchase. Recommended alternatives for this product can be found below, along with publications, customer reviews and Q&As</p>

Properties

Form	Liquid
Storage instructions	Shipped at 4°C. Store at +4°C short term (1-2 weeks). Upon delivery aliquot. Store at -20°C long term. Avoid freeze / thaw cycle.
Storage buffer	pH: 7.40 Preservative: 0.03% Proclin 300 Constituents: 50% Glycerol (glycerin, glycerine), PBS
Purity	Protein G purified
Purification notes	Purity greater than 95%.
Clonality	Polyclonal
Isotype	IgG

Applications

The Abpromise guarantee

Our **Abpromise guarantee** covers the use of ab237521 in the following tested applications.

The application notes include recommended starting dilutions; optimal dilutions/concentrations should be determined by the end user.

Application	Abreviews	Notes
WB		1/500 - 1/5000. Predicted molecular weight: 52 kDa.
IHC-P		1/500 - 1/1000.
ICC/IF		1/50 - 1/200.

Target

Function

Adenylyltransferase that mediates the addition of adenosine 5'-monophosphate (AMP) to specific residues of target proteins. Able to inactivate Rho GTPases in vitro by adding AMP to RhoA, Rac and Cdc42. It is however unclear whether it inactivates GTPases in vivo and physiological substrates probably remain to be identified.

Tissue specificity

Ubiquitous.

Sequence similarities

Belongs to the fic family.
Contains 1 fido domain.
Contains 2 TPR repeats.

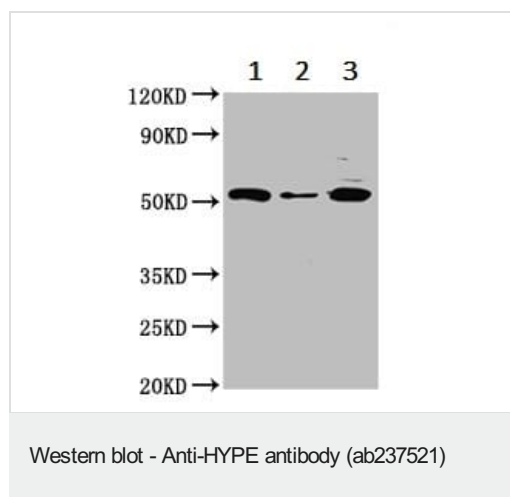
Domain

The fido domain mediates the adenylyltransferase activity.

Cellular localization

Membrane.

Images



All lanes : Anti-HYPE antibody (ab237521) at 1/500 dilution

Lane 1 : A549 (human lung carcinoma cell line) whole cell lysate

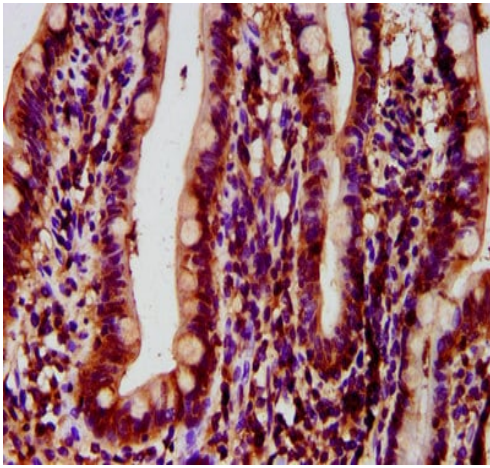
Lane 2 : HeLa (human epithelial cell line from cervix adenocarcinoma) whole cell lysate

Lane 3 : Rat kidney tissue lysate

Secondary

All lanes : Goat polyclonal to rabbit IgG at 1/50000 dilution

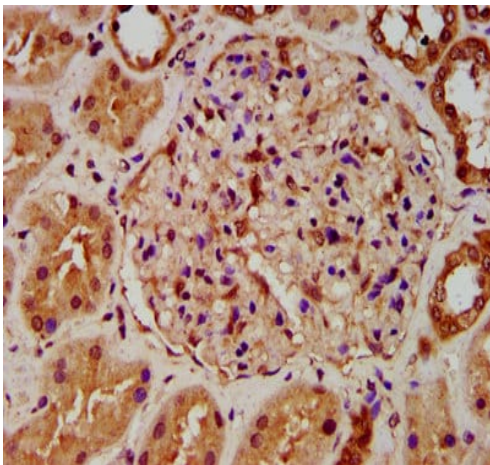
Predicted band size: 52 kDa



Immunohistochemistry (Formalin/PFA-fixed paraffin-embedded sections) - Anti-HYPE antibody (ab237521)

Paraffin-embedded human small intestine tissue stained for HYPE using ab237521 at 1/500 dilution in immunohistochemical analysis.

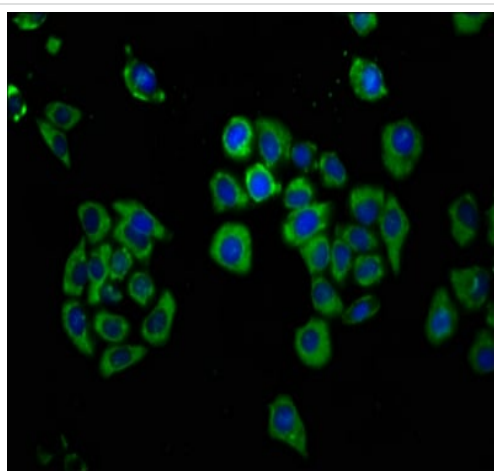
After dewaxing and hydration, antigen retrieval was mediated by high pressure in a citrate buffer (pH 6.0). Section was blocked with 10% normal goat serum 30 minutes at RT. Then primary antibody (1% BSA) was incubated at 4°C overnight. The primary is detected by a biotinylated secondary antibody and visualized using an HRP conjugated SP system.



Immunohistochemistry (Formalin/PFA-fixed paraffin-embedded sections) - Anti-HYPE antibody (ab237521)

Paraffin-embedded human kidney tissue stained for HYPE using ab237521 at 1/500 dilution in immunohistochemical analysis.

After dewaxing and hydration, antigen retrieval was mediated by high pressure in a citrate buffer (pH 6.0). Section was blocked with 10% normal goat serum 30 minutes at RT. Then primary antibody (1% BSA) was incubated at 4°C overnight. The primary is detected by a biotinylated secondary antibody and visualized using an HRP conjugated SP system.



Immunocytochemistry/ Immunofluorescence - Anti-HYPE antibody (ab237521)

PC-3 (Human prostate adenocarcinoma cell line) cells stained for HYPE (green) using ab237521 at 1/166 dilution in ICC/IF. Secondary antibody is an Alexa Fluor® 488-conjugated Goat Anti-Rabbit IgG (H+L). The nuclear counter stain is DAPI (blue).

The cells were fixed in 4% formaldehyde, permeabilized using 0.2% Triton X-100 and blocked in 10% normal goat serum. The cells were then incubated with the antibody overnight at 4°C.

Please note: All products are "FOR RESEARCH USE ONLY. NOT FOR USE IN DIAGNOSTIC PROCEDURES"

Our Abpromise to you: Quality guaranteed and expert technical support

- Replacement or refund for products not performing as stated on the datasheet
- Valid for 12 months from date of delivery
- Response to your inquiry within 24 hours
- We provide support in Chinese, English, French, German, Japanese and Spanish
- Extensive multi-media technical resources to help you
- We investigate all quality concerns to ensure our products perform to the highest standards

If the product does not perform as described on this datasheet, we will offer a refund or replacement. For full details of the Abpromise, please visit <https://www.abcam.com/abpromise> or contact our technical team.

Terms and conditions

- Guarantee only valid for products bought direct from Abcam or one of our authorized distributors