

### Anti-ICAM2 antibody [B-T1] $\alpha$ b47172

[1 Image](#)

#### Overview

<b>Product name</b>	Anti-ICAM2 antibody [B-T1]
<b>Description</b>	Mouse monoclonal [B-T1] to ICAM2
<b>Host species</b>	Mouse
<b>Specificity</b>	Recognises the Intercellular Adhesion Molecule-2 (ICAM-2), a 55-65 kDa protein.
<b>Tested applications</b>	<b>Suitable for:</b> Flow Cyt
<b>Species reactivity</b>	<b>Reacts with:</b> Human
<b>Immunogen</b>	Tissue, cells or virus corresponding to Human ICAM2. ICAM2 transfected CHO cell line
<b>Positive control</b>	Flow Cyt: Human lymphocytes
<b>General notes</b>	<p>This product was changed from ascites to tissue culture supernatant on 4<sup>th</sup> April 2019. Please note that the dilutions may need to be adjusted accordingly. If you have any questions, please do not hesitate to contact our scientific support team.</p> <p>The Life Science industry has been in the grips of a reproducibility crisis for a number of years. Abcam is leading the way in addressing this with our range of recombinant monoclonal antibodies and knockout edited cell lines for gold-standard validation. Please check that this product meets your needs before purchasing.</p> <p>If you have any questions, special requirements or concerns, please send us an inquiry and/or contact our Support team ahead of purchase. Recommended alternatives for this product can be found below, along with publications, customer reviews and Q&amp;As</p>

#### Properties

<b>Form</b>	Liquid
<b>Storage instructions</b>	Shipped at 4°C. Store at 4°C (up to 6 months). Upon delivery aliquot. Store at -20°C or -80°C. Avoid freeze / thaw cycle.
<b>Storage buffer</b>	pH: 7.3 Constituent: PBS
<b>Purity</b>	Tissue culture supernatant
<b>Clonality</b>	Monoclonal
<b>Clone number</b>	B-T1
<b>Myeloma</b>	x63-Ag8.653

Isotype	IgG1
Light chain type	kappa

## Applications

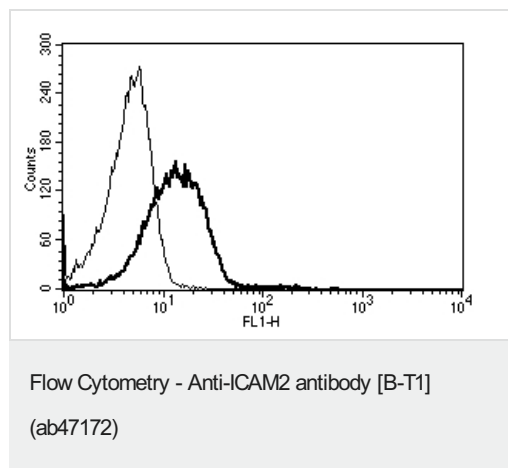
**The Abpromise guarantee** Our **Abpromise guarantee** covers the use of ab47172 in the following tested applications. The application notes include recommended starting dilutions; optimal dilutions/concentrations should be determined by the end user.

Application	Abreviews	Notes
Flow Cyt		Use at an assay dependent concentration. <b>ab170190</b> - Mouse monoclonal IgG1, is suitable for use as an isotype control with this antibody.

## Target

<b>Function</b>	ICAM proteins are ligands for the leukocyte adhesion protein LFA-1 (integrin alpha-L/beta-2). ICAM2 may play a role in lymphocyte recirculation by blocking LFA-1-dependent cell adhesion. It mediates adhesive interactions important for antigen-specific immune response, NK-cell mediated clearance, lymphocyte recirculation, and other cellular interactions important for immune response and surveillance.
<b>Sequence similarities</b>	Belongs to the immunoglobulin superfamily. ICAM family. Contains 2 Ig-like C2-type (immunoglobulin-like) domains.
<b>Cellular localization</b>	Membrane.

## Images



Flow cytometry analysis staining ICAM2 in human lymphocytes using ab47172 monoclonal antibody.

This image was generated using the ascites version of the product.

**Please note:** All products are "FOR RESEARCH USE ONLY. NOT FOR USE IN DIAGNOSTIC PROCEDURES"

**Our Abpromise to you: Quality guaranteed and expert technical support**

- Replacement or refund for products not performing as stated on the datasheet
- Valid for 12 months from date of delivery
- Response to your inquiry within 24 hours
- We provide support in Chinese, English, French, German, Japanese and Spanish
- Extensive multi-media technical resources to help you
- We investigate all quality concerns to ensure our products perform to the highest standards

If the product does not perform as described on this datasheet, we will offer a refund or replacement. For full details of the Abpromise, please visit <https://www.abcam.com/abpromise> or contact our technical team.

#### **Terms and conditions**

---

- Guarantee only valid for products bought direct from Abcam or one of our authorized distributors