

## Product datasheet

# Anti-IDH1 (mutated R132G) antibody [GMab-r1] ab264050

Recombinant

[1 References](#) [3 Images](#)

### Overview

---

<b>Product name</b>	Anti-IDH1 (mutated R132G) antibody [GMab-r1]
<b>Description</b>	Rat monoclonal [GMab-r1] to IDH1 (mutated R132G)
<b>Host species</b>	Rat
<b>Tested applications</b>	<b>Suitable for:</b> Indirect ELISA, WB
<b>Species reactivity</b>	<b>Reacts with:</b> Human
<b>Immunogen</b>	Synthetic peptide. This information is proprietary to Abcam and/or its suppliers.
<b>Positive control</b>	WB: His-tagged human IDH1 mutated R132G (aa1-414) recombinant protein.
<b>General notes</b>	<p>This antibody clone is manufactured by Abcam. If you require a custom buffer formulation or conjugation for your experiments, please contact <a href="mailto:orders@abcam.com">orders@abcam.com</a>.</p> <p>This product is a recombinant monoclonal antibody, which offers several advantages including:</p> <ul style="list-style-type: none"><li>- High batch-to-batch consistency and reproducibility</li><li>- Improved sensitivity and specificity</li><li>- Long-term security of supply</li><li>- Animal-free production</li></ul> <p>For more information <a href="#">see here</a>.</p>

### Properties

---

<b>Form</b>	Liquid
<b>Storage instructions</b>	Shipped at 4°C. Store at +4°C short term (1-2 weeks). Upon delivery aliquot. Store at -20°C long term. Avoid freeze / thaw cycle.
<b>Storage buffer</b>	pH: 7.2 Preservative: 0.01% Sodium azide Constituents: PBS, 0.05% BSA, 40% Glycerol (glycerin, glycerine)
<b>Purity</b>	Ion Exchange Chromatography
<b>Clonality</b>	Monoclonal
<b>Clone number</b>	GMab-r1

<b>Isotype</b>	IgG2a
<b>Light chain type</b>	kappa

## Applications

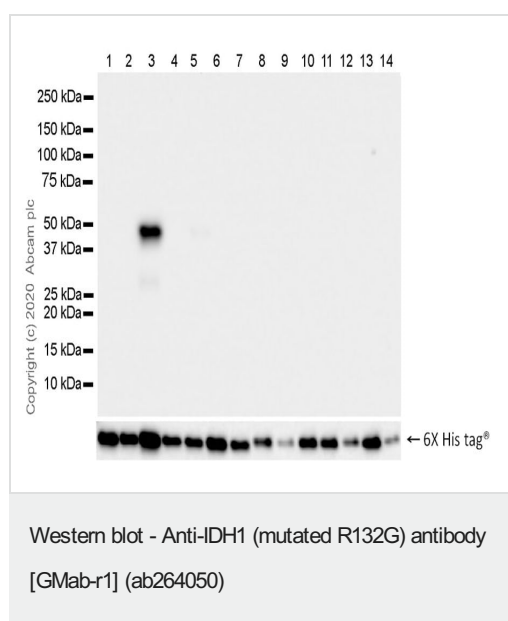
**The Abpromise guarantee** Our **Abpromise guarantee** covers the use of ab264050 in the following tested applications. The application notes include recommended starting dilutions; optimal dilutions/concentrations should be determined by the end user.

Application	Abreviews	Notes
<b>Indirect ELISA</b>		Use a concentration of 4.058 µg/ml.
<b>WB</b>		Use a concentration of 1.266 µg/ml. Predicted molecular weight: 46 kDa.

## Target

<b>Involvement in disease</b>	Glioma Genetic variations are associated with cartilaginous tumors such as enchondroma or chondrosarcoma. Mutations of Arg-132 to Cys, Gly or His abolish the conversion of isocitrate to alpha-ketoglutarate. Instead, alpha-ketoglutarate is converted to R(-)-2-hydroxyglutarate.
<b>Sequence similarities</b>	Belongs to the isocitrate and isopropylmalate dehydrogenases family.
<b>Post-translational modifications</b>	Acetylation at Lys-374 dramatically reduces catalytic activity.
<b>Cellular localization</b>	Cytoplasm. Peroxisome.

## Images



### Western blot - Anti-IDH1 (mutated R132 G) antibody [GMab-r1] (ab264050).

ab264050 used at a 1/1000 dilution (1.266µg/ml) followed by Goat Anti-Rat IgG (H+L), HRP (ab205720) used at a 1/10,000 dilution.

Blocking/Dilution buffer: 5% NFDm/TBST.

**Lane 1:** His-tagged human IDH1 (aa1-414) recombinant protein 10ng

**Lane 2:** His-tagged human IDH1 mutated R132H (aa1-414) recombinant protein 10ng

**Lane 3:** His-tagged human IDH1 mutated R132G (aa1-414) recombinant protein 10ng

**Lane 4:** His-tagged human IDH1 mutated R132L (aa1-414) recombinant protein 10ng

**Lane 5:** His-tagged human IDH1 mutated R132S (aa1-414) recombinant protein 10ng

**Lane 6:** His-tagged human IDH1 mutated R132V (aa1-414) recombinant protein 10ng

**Lane 7:** His-tagged human IDH1 mutated R132C (aa1-414) recombinant protein 10ng

**Lane 8:** His-tagged human IDH2 (aa40-452) recombinant protein 10ng

**Lane 9:** His-tagged human IDH2 mutated R172M (aa40-452) recombinant protein 10ng

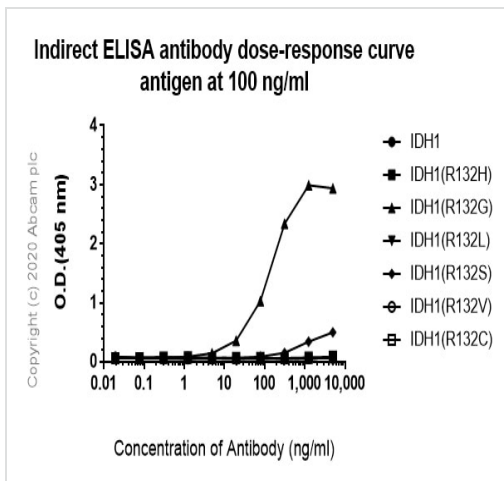
**Lane 10:** His-tagged human IDH2 mutated R172S (aa40-452) recombinant protein 10ng

**Lane 11:** His-tagged human IDH2 mutated R172G (aa40-452) recombinant protein 10ng

**Lane 12:** His-tagged human IDH2 mutated R172W (aa40-452) recombinant protein 10ng

**Lane 13:** His-tagged human IDH2 mutated R172K (aa40-452) recombinant protein 10ng

**Lane 14:** His-tagged human IDH2 mutated R140Q (aa40-452) recombinant protein 10ng



Indirect ELISA - Anti-IDH1 (mutated R132G)  
antibody [GMab-r1] (ab264050)

#### ELISA - Anti-IDH1 (mutated R132 G) antibody [GMab-r1] (ab264050).

ab264050 used at 0-5000 ng/ml, followed by an Alkaline Phosphatase-conjugated AffiniPure Goat Anti-Mouse IgG (H+L) secondary used at 1/1000 dilution.

Antigen concentration 100 ng/ml.

### Why choose a recombinant antibody?



**Research with confidence**  
Consistent and reproducible results



**Long-term and scalable supply**  
Recombinant technology



**Success from the first experiment**  
Confirmed specificity



**Ethical standards compliant**  
Animal-free production

Anti-IDH1 (mutated R132G) antibody [GMab-r1]  
(ab264050)

**Please note:** All products are "FOR RESEARCH USE ONLY. NOT FOR USE IN DIAGNOSTIC PROCEDURES"

### Our Abpromise to you: Quality guaranteed and expert technical support

---

- Replacement or refund for products not performing as stated on the datasheet
- Valid for 12 months from date of delivery
- Response to your inquiry within 24 hours
- We provide support in Chinese, English, French, German, Japanese and Spanish
- Extensive multi-media technical resources to help you
- We investigate all quality concerns to ensure our products perform to the highest standards

If the product does not perform as described on this datasheet, we will offer a refund or replacement. For full details of the Abpromise, please visit <https://www.abcam.com/abpromise> or contact our technical team.

### Terms and conditions

---

- Guarantee only valid for products bought direct from Abcam or one of our authorized distributors