


## Product datasheet

# Anti-IDO-2 antibody ab214214

[3 References](#) [1 Image](#)

### Overview

---

<b>Product name</b>	Anti-IDO-2 antibody
<b>Description</b>	Rabbit polyclonal to IDO-2
<b>Host species</b>	Rabbit
<b>Tested applications</b>	<b>Suitable for:</b> IHC-P
<b>Species reactivity</b>	<b>Reacts with:</b> Rat <b>Predicted to work with:</b> Mouse, Human 
<b>Immunogen</b>	Synthetic peptide within Human IDO-2 aa 290-340 conjugated to keyhole limpet haemocyanin. The exact sequence is proprietary. Database link: <a href="#">Q6ZQW0</a>
<b>Positive control</b>	Rat brain tissue.
<b>General notes</b>	<p>The Life Science industry has been in the grips of a reproducibility crisis for a number of years. Abcam is leading the way in addressing this with our range of recombinant monoclonal antibodies and knockout edited cell lines for gold-standard validation. Please check that this product meets your needs before purchasing.</p> <p>If you have any questions, special requirements or concerns, please send us an inquiry and/or contact our Support team ahead of purchase. Recommended alternatives for this product can be found below, along with publications, customer reviews and Q&amp;As</p>

### Properties

---

<b>Form</b>	Liquid
<b>Storage instructions</b>	Shipped at 4°C. Store at +4°C short term (1-2 weeks). Upon delivery aliquot. Store at -20°C long term. Avoid freeze / thaw cycle.
<b>Storage buffer</b>	pH: 7.40 Preservative: 0.02% Proclin 300 Constituents: 50% Glycerol (glycerin, glycerine), 1% BSA, 48.98% TBS, 1X
<b>Purity</b>	Protein A purified
<b>Clonality</b>	Polyclonal
<b>Isotype</b>	IgG

## Applications

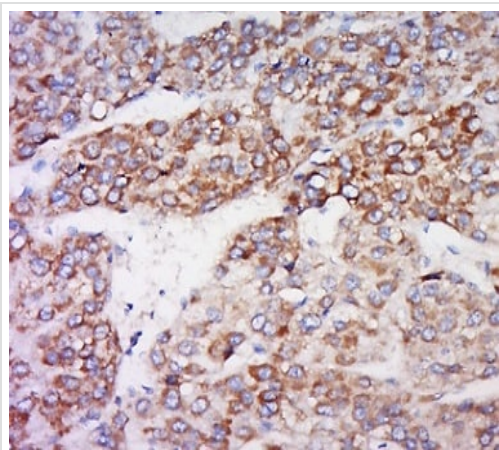
**The Abpromise guarantee** Our **Abpromise guarantee** covers the use of ab214214 in the following tested applications. The application notes include recommended starting dilutions; optimal dilutions/concentrations should be determined by the end user.

Application	Abreviews	Notes
IHC-P		1/100 - 1/500. Perform heat mediated antigen retrieval with citrate buffer pH 6 before commencing with IHC staining protocol.

## Target

<b>Function</b>	Catalyzes the first and rate-limiting step in the kynurenine pathway of tryptophan catabolism.
<b>Tissue specificity</b>	Detected in liver, small intestine, spleen, placenta, thymus, lung, brain, kidney, and colon.
<b>Pathway</b>	Amino-acid degradation; L-tryptophan degradation via kynurenine pathway; L-kynurenine from L-tryptophan: step 1/2.
<b>Sequence similarities</b>	Belongs to the indoleamine 2,3-dioxygenase family.

## Images



Immunohistochemistry (Formalin/PFA-fixed paraffin-embedded sections) - Anti-IDO-2 antibody (ab214214)

Immunohistochemical analysis of formalin-fixed, paraffin-embedded rat brain tissue labeling IDO-2 with ab214214 at 1/500 dilution, followed by conjugation to the secondary antibody and DAB staining.

**Please note:** All products are "FOR RESEARCH USE ONLY. NOT FOR USE IN DIAGNOSTIC PROCEDURES"

## Our Abpromise to you: Quality guaranteed and expert technical support

- Replacement or refund for products not performing as stated on the datasheet
- Valid for 12 months from date of delivery
- Response to your inquiry within 24 hours
- We provide support in Chinese, English, French, German, Japanese and Spanish

- Extensive multi-media technical resources to help you
- We investigate all quality concerns to ensure our products perform to the highest standards

If the product does not perform as described on this datasheet, we will offer a refund or replacement. For full details of the Abpromise, please visit <https://www.abcam.com/abpromise> or contact our technical team.

### **Terms and conditions**

---

- Guarantee only valid for products bought direct from Abcam or one of our authorized distributors