

Anti-IEX1/IER3 antibody ab65152

[6 References](#) [3 Images](#)

Overview

Product name	Anti-IEX1/IER3 antibody
Description	Rabbit polyclonal to IEX1/IER3
Host species	Rabbit
Tested applications	Suitable for: WB, IHC-P, ICC/IF
Species reactivity	Reacts with: Mouse, Human
Immunogen	Synthetic peptide. This information is proprietary to Abcam and/or its suppliers.
Positive control	IHC-P: Human adrenal tissue. ICC/IF: Human brain cells. WB: Human brain tissue lysate.
General notes	<p>The Life Science industry has been in the grips of a reproducibility crisis for a number of years. Abcam is leading the way in addressing this with our range of recombinant monoclonal antibodies and knockout edited cell lines for gold-standard validation. Please check that this product meets your needs before purchasing.</p> <p>If you have any questions, special requirements or concerns, please send us an inquiry and/or contact our Support team ahead of purchase. Recommended alternatives for this product can be found below, along with publications, customer reviews and Q&As</p>

Properties

Form	Liquid
Storage instructions	Shipped at 4°C. Store at +4°C short term (1-2 weeks). Upon delivery aliquot. Store at -20°C long term.
Storage buffer	pH: 7.4 Preservative: 0.02% Sodium azide Constituent: PBS
Purity	Immunogen affinity purified
Clonality	Polyclonal
Isotype	IgG

Applications

The Abpromise guarantee Our **Abpromise guarantee** covers the use of ab65152 in the following tested applications.

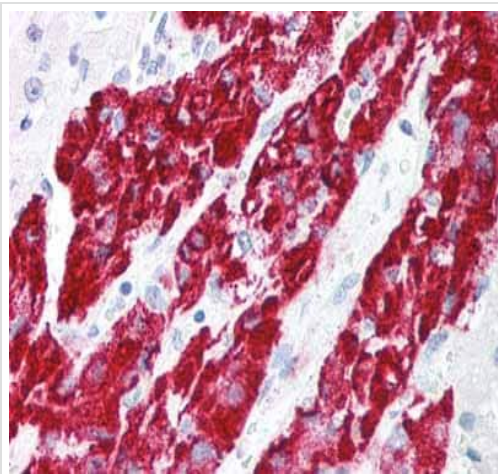
The application notes include recommended starting dilutions; optimal dilutions/concentrations should be determined by the end user.

Application	Abreviews	Notes
WB		Use a concentration of 2 - 4 µg/ml. Predicted molecular weight: 17 kDa.
IHC-P		Use a concentration of 5 µg/ml.
ICC/IF		Use a concentration of 20 µg/ml.

Target

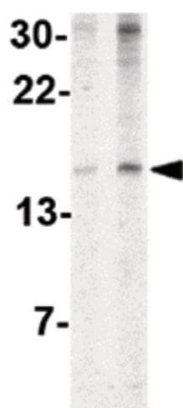
Function	May play a role in the ERK signaling pathway by inhibiting the dephosphorylation of ERK by phosphatase PP2A-PPP2R5C holoenzyme. Acts also as an ERK downstream effector mediating survival. As a member of the NUPR1/RELB/IER3 survival pathway, may provide pancreatic ductal adenocarcinoma with remarkable resistance to cell stress, such as starvation or gemcitabine treatment.
Sequence similarities	Belongs to the IER3 family.
Post-translational modifications	Phosphorylated at Thr-18, Thr-123 and Ser-126 by MAPK1/ERK2 and probably MAPK3/ERK1. Upon phosphorylation by MAPK1/ERK2 and MAPK3/ERK1, acquires the ability to inhibit cell death induced by various stimuli. Glycosylated.
Cellular localization	Membrane.

Images



Immunohistochemical analysis of formalin-fixed, paraffin-embedded human adrenal tissue, staining IEX1/IER3 with ab65152 at 5 µg/ml.

Immunohistochemistry (Formalin/PFA-fixed paraffin-embedded sections) - Anti-IEX1/IER3 antibody (ab65152)



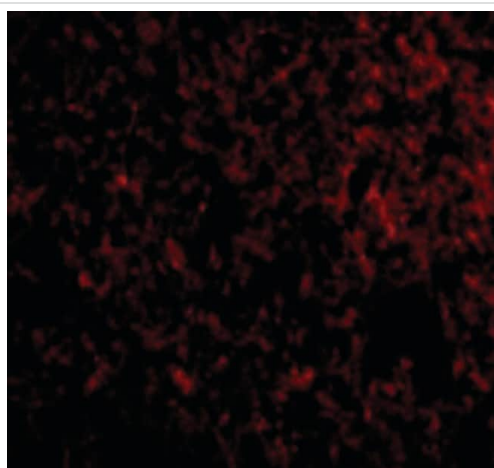
Western blot - Anti-LEX1/IER3 antibody (ab65152)

Lane 1 : Anti-LEX1/IER3 antibody (ab65152) at 2 µg/ml

Lane 2 : Anti-LEX1/IER3 antibody (ab65152) at 4 µg/ml

All lanes : Human brain tissue lysate

Predicted band size: 17 kDa



Immunocytochemistry/ Immunofluorescence - Anti-LEX1/IER3 antibody (ab65152)

Immunocytochemistry/ Immunofluorescence analysis of human brain cells staining LEX1/IER3 with ab65152 at 20 µg/ml.

Please note: All products are "FOR RESEARCH USE ONLY. NOT FOR USE IN DIAGNOSTIC PROCEDURES"

Our Abpromise to you: Quality guaranteed and expert technical support

- Replacement or refund for products not performing as stated on the datasheet
- Valid for 12 months from date of delivery
- Response to your inquiry within 24 hours
- We provide support in Chinese, English, French, German, Japanese and Spanish
- Extensive multi-media technical resources to help you
- We investigate all quality concerns to ensure our products perform to the highest standards

If the product does not perform as described on this datasheet, we will offer a refund or replacement. For full details of the Abpromise, please visit <https://www.abcam.com/abpromise> or contact our technical team.

Terms and conditions

- Guarantee only valid for products bought direct from Abcam or one of our authorized distributors