

## Product datasheet

### Anti-IFFO2 antibody [EPR22712-35] ab242131

KO VALIDATED

Recombinant

RabMAb<sup>®</sup>

4 Images

#### Overview

<b>Product name</b>	Anti-IFFO2 antibody [EPR22712-35]
<b>Description</b>	Rabbit monoclonal [EPR22712-35] to IFFO2
<b>Host species</b>	Rabbit
<b>Tested applications</b>	<b>Suitable for:</b> WB, IP <b>Unsuitable for:</b> Flow Cyt (Intra), ICC/IF or IHC-P
<b>Species reactivity</b>	<b>Reacts with:</b> Mouse, Rat, Human
<b>Immunogen</b>	Synthetic peptide. This information is proprietary to Abcam and/or its suppliers.
<b>Positive control</b>	WB: HEK-293T, HDLM-2, NIH/3T3, MEF and C6 whole cell lysates. IP: HEK-293T whole cell lysate.
<b>General notes</b>	<p>This product is a recombinant monoclonal antibody, which offers several advantages including:</p> <ul style="list-style-type: none"><li>- High batch-to-batch consistency and reproducibility</li><li>- Improved sensitivity and specificity</li><li>- Long-term security of supply</li><li>- Animal-free production</li></ul> <p>For more information <a href="#">see here</a>.</p> <p>Our RabMAb<sup>®</sup> technology is a patented hybridoma-based technology for making rabbit monoclonal antibodies. For details on our patents, please refer to <a href="#">RabMAb<sup>®</sup> patents</a>.</p>

#### Properties

<b>Form</b>	Liquid
<b>Storage instructions</b>	Shipped at 4°C. Store at +4°C short term (1-2 weeks). Upon delivery aliquot. Store at -20°C long term. Avoid freeze / thaw cycle.
<b>Storage buffer</b>	Preservative: 0.01% Sodium azide Constituents: 59.94% PBS, 40% Glycerol (glycerin, glycerine), 0.05% BSA
<b>Purity</b>	Protein A purified
<b>Clonality</b>	Monoclonal
<b>Clone number</b>	EPR22712-35
<b>Isotype</b>	IgG

## Applications

### The Abpromise guarantee

Our **Abpromise guarantee** covers the use of ab242131 in the following tested applications.

The application notes include recommended starting dilutions; optimal dilutions/concentrations should be determined by the end user.

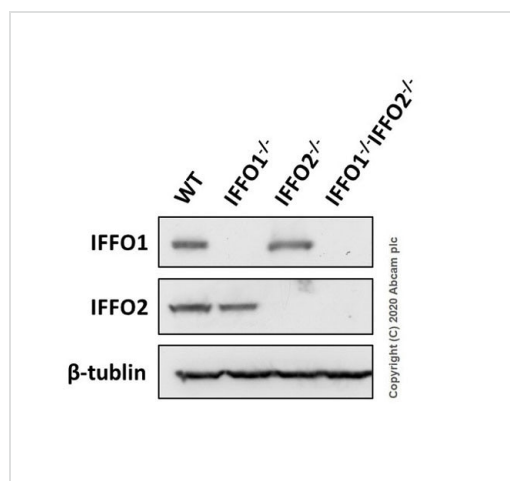
Application	Abreviews	Notes
WB		1/1000. Detects a band of approximately 70 kDa (predicted molecular weight: 57 kDa).
IP		1/30.

### Application notes

Is unsuitable for Flow Cyt (Intra), ICC/IF or IHC-P.

## Target

## Images



Western blot - Anti-IFFO2 antibody [EPR22712-35]  
(ab242131)

**All lanes :** Anti-IFFO2 antibody [EPR22712-35] (ab242131) at 1/1000 dilution

**Lane 1 :** Wild-type HEK-293T (human embryonic kidney epithelial cell) whole cell lysate

**Lane 2 :** IFFO1 knockout HEK-293T whole cell lysate

**Lane 3 :** IFFO2 knockout HEK-293T whole cell lysate

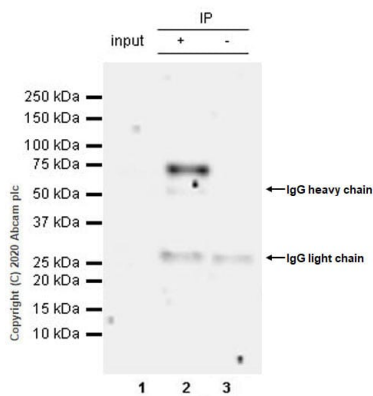
**Lane 4 :** IFFO1/IFFO2 knockout HEK-293T whole cell lysate

**Predicted band size:** 57 kDa

Blocking and diluting buffer and concentration: 5% NFDM/TBST

Data was kindly provided by an anonymous collaborator.

The antibody for IFFO1 is **ab242130**.



Immunoprecipitation - Anti-IFFO2 antibody  
[EPR22712-35] (ab242131)

IFFO2 was immunoprecipitated from 0.35 mg HEK-293T (human embryonic kidney epithelial cell) whole cell lysate with ab242131 at 1/30 dilution (2ug in 0.35mg lysates). Western blot was performed on the immunoprecipitate using ab242131 at 1/1000 dilution. VeriBlot for IP Detection Reagent (HRP)(**ab131366**) was used at 1/5000 dilution.

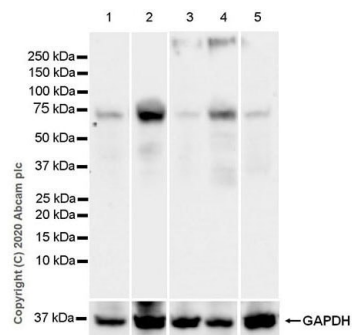
**Lane 1:** HEK-293T (human embryonic kidney epithelial cell) whole cell lysate 10 ug

**Lane 2:** ab242131 IP in HEK293T whole cell lysate

**Lane 3:** Rabbit monoclonal IgG (**ab172730**) instead of ab242131 in HEK-293T whole cell lysate

Blocking and dilution buffer and concentration: 5% NFDm/TBST.

Exposure time: 3 minutes



Western blot - Anti-IFFO2 antibody [EPR22712-35]  
(ab242131)

**All lanes :** Anti-IFFO2 antibody [EPR22712-35] (ab242131) at 1/1000 dilution

**Lane 1 :** HEK-293T (human embryonic kidney epithelial cell) whole cell lysate

**Lane 2 :** HDLM-2 (human hodgkin lymphoma) whole cell lysate

**Lane 3 :** NIH/3T3 (mouse embryonic fibroblast) whole cell lysate

**Lane 4 :** MEF (mouse embryonic fibroblast (immortalized)) whole cell lysate

**Lane 5 :** C6 (rat glial tumor glial cell) whole cell lysate

Lysates/proteins at 20 µg per lane.

### Secondary

**All lanes :** Goat Anti-Rabbit IgG H&L (HRP) (**ab97051**) at 1/20000 dilution (Goat Anti-Rabbit IgG, (H+L), Peroxidase conjugated)


**Predicted band size:** 57 kDa

**Observed band size:** 70 kDa

Blocking and diluting buffer and concentration: 5% NFDm/TBST

Exposure time: Lane 2: 15 seconds Lane 1, lane 3-5: 59 seconds

Why choose a recombinant antibody?



- Research with confidence**  
Consistent and reproducible results
- Long-term and scalable supply**  
Recombinant technology
- Success from the first experiment**  
Confirmed specificity
- Ethical standards compliant**  
Animal-free production

Anti-IFFO2 antibody [EPR22712-35] (ab242131)

**Please note:** All products are "FOR RESEARCH USE ONLY. NOT FOR USE IN DIAGNOSTIC PROCEDURES"

### Our Abpromise to you: Quality guaranteed and expert technical support

---

- Replacement or refund for products not performing as stated on the datasheet
- Valid for 12 months from date of delivery
- Response to your inquiry within 24 hours
- We provide support in Chinese, English, French, German, Japanese and Spanish
- Extensive multi-media technical resources to help you
- We investigate all quality concerns to ensure our products perform to the highest standards

If the product does not perform as described on this datasheet, we will offer a refund or replacement. For full details of the Abpromise, please visit <https://www.abcam.com/abpromise> or contact our technical team.

### Terms and conditions

---

- Guarantee only valid for products bought direct from Abcam or one of our authorized distributors