




Product datasheet

Anti-IFIT3/P60 antibody [OTI1G1] α b118045

5 Images

Overview

Product name	Anti-IFIT3/P60 antibody [OTI1G1]
Description	Mouse monoclonal [OTI1G1] to IFIT3/P60
Host species	Mouse
Tested applications	Suitable for: WB, ICC/IF, Flow Cyt (Intra)
Species reactivity	Reacts with: Human, African green monkey Predicted to work with: Chimpanzee 
Immunogen	Recombinant full length protein corresponding to Human IFIT3/P60 aa 1 to the C-terminus. Produced in HEK-293T cells (NP_001540). Database link: Q14879 <div>  Run BLAST with  Run BLAST with </div>
Positive control	WB: HepG2, HeLa, A549, COS-7, Jurkat and MCF7 extracts; HEK-293T cells transfected with pCMV6-ENTRY IFIT3/P60 cDNA. ICC/IF: COS-7 (transiently transfected by pCMV6-ENTRY IFIT3/P60 cDNA) and HT-29 cells. Flow Cyt (Intra): Jurkat cells.
General notes	<p>The Life Science industry has been in the grips of a reproducibility crisis for a number of years. Abcam is leading the way in addressing this with our range of recombinant monoclonal antibodies and knockout edited cell lines for gold-standard validation. Please check that this product meets your needs before purchasing.</p> <p>If you have any questions, special requirements or concerns, please send us an inquiry and/or contact our Support team ahead of purchase. Recommended alternatives for this product can be found below, along with publications, customer reviews and Q&As</p>

Properties

Form	Liquid
Storage instructions	Shipped at 4°C. Store at +4°C short term (1-2 weeks). Upon delivery aliquot. Store at -20°C. Avoid freeze / thaw cycle.
Storage buffer	pH: 7.30 Preservative: 0.02% Sodium azide Constituents: PBS, 50% Glycerol, 1% BSA
Purity	Affinity purified
Purification notes	Purified from cell culture supernatant by affinity chromatography.

Clonality	Monoclonal
Clone number	OT11G1
Isotype	IgG1

Applications

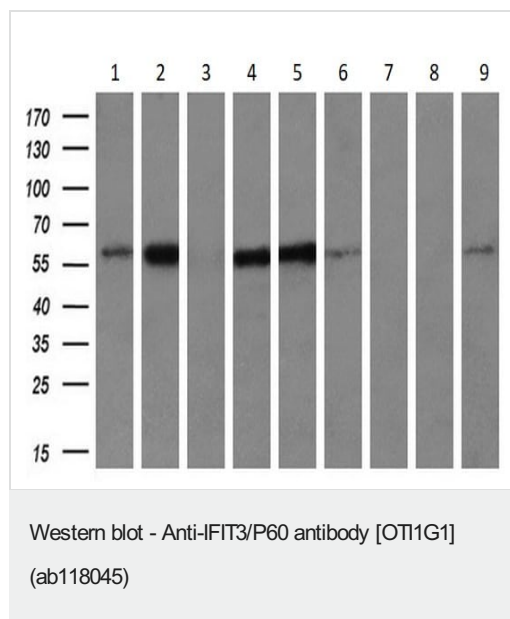
The Abpromise guarantee Our **Abpromise guarantee** covers the use of ab118045 in the following tested applications. The application notes include recommended starting dilutions; optimal dilutions/concentrations should be determined by the end user.

Application	Abreviews	Notes
WB		1/2000. Predicted molecular weight: 56 kDa.
ICC/IF		1/100.
Flow Cyt (Intra)		1/100. ab170190 - Mouse monoclonal IgG1, is suitable for use as an isotype control with this antibody.

Target

Sequence similarities Belongs to the IFIT family.
Contains 8 TPR repeats.

Images



All lanes : Anti-IFIT3/P60 antibody [OT11G1] (ab118045) at 1/200 dilution

Lane 1 : HepG2 (human liver hepatocellular carcinoma cell line) extracts

Lane 2 : HeLa (Human epithelial cell line from cervix adenocarcinoma) extracts

Lane 3 : SVT2 extracts

Lane 4 : A549 (Human lung carcinoma cell line) extracts

Lane 5 : COS-7 (African green monkey kidney fibroblast-like cell line) extracts

Lane 6 : Jurkat (Human T cell leukemia cell line from peripheral blood) extracts

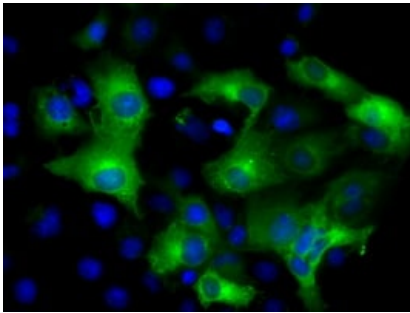
Lane 7 : MDCK (Canine kidney cell line) extracts

Lane 8 : PC-12 (Rat adrenal gland pheochromocytoma cell line) extracts

Lane 9 : MCF7 (Human breast adenocarcinoma cell line) extracts

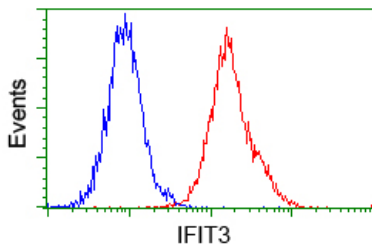
Lysates/proteins at 35 µg per lane.

Predicted band size: 56 kDa



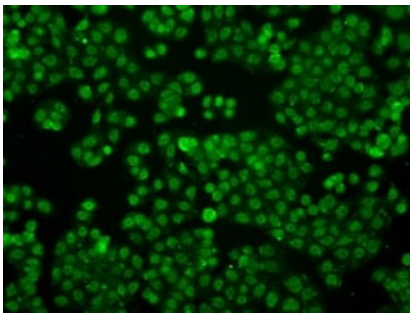
Immunocytochemistry/ Immunofluorescence - Anti-IFIT3/P60 antibody [OT11G1] (ab118045)

pCMV6-ENTRY IFIT3/P60 cDNA transfected COS-7 (African green monkey kidney fibroblast-like cell line) cells stained for IFIT3/P60 using ab118045 at a 1/100 dilution in ICC/IF.



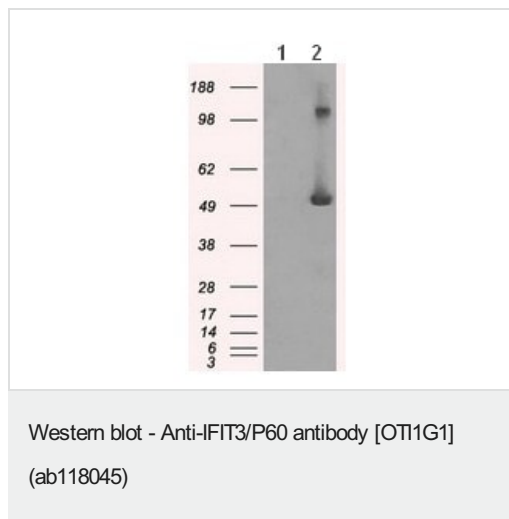
Flow Cytometry (Intracellular) - Anti-IFIT3/P60 antibody [OT11G1] (ab118045)

ab118045 at 1/100 dilution staining IFIT3/P60 in Jurkat (Human T cell leukemia cell line from peripheral blood) cells by Flow cytometry (Red) compared to a nonspecific negative control antibody (Blue).



Immunocytochemistry/ Immunofluorescence - Anti-IFIT3/P60 antibody [OT11G1] (ab118045)

HT-29 (Human colorectal adenocarcinoma cell line) cells stained for IFIT3/P60 using ab118045 at a 1/100 dilution in ICC/IF.



All lanes : Anti-IFIT3/P60 antibody [OT11G1] (ab118045) at 1/2000 dilution

Lane 1 : HEK-293T (Human epithelial cell line from embryonic kidney transformed with large T antigen) cells, transfected with pCMV6-ENTRY control cDNA

Lane 2 : HEK-293T cells, transfected with pCMV6-ENTRY IFIT3/P60 cDNA

Lysates/proteins at 5 µg per lane.

Predicted band size: 56 kDa

Please note: All products are "FOR RESEARCH USE ONLY. NOT FOR USE IN DIAGNOSTIC PROCEDURES"

Our Abpromise to you: Quality guaranteed and expert technical support

- Replacement or refund for products not performing as stated on the datasheet
- Valid for 12 months from date of delivery
- Response to your inquiry within 24 hours
- We provide support in Chinese, English, French, German, Japanese and Spanish
- Extensive multi-media technical resources to help you
- We investigate all quality concerns to ensure our products perform to the highest standards

If the product does not perform as described on this datasheet, we will offer a refund or replacement. For full details of the Abpromise, please visit <https://www.abcam.com/abpromise> or contact our technical team.

Terms and conditions

- Guarantee only valid for products bought direct from Abcam or one of our authorized distributors