


### Anti-IFRD1 antibody ab137633

2 Images

#### Overview

<b>Product name</b>	Anti-IFRD1 antibody
<b>Description</b>	Rabbit polyclonal to IFRD1
<b>Host species</b>	Rabbit
<b>Tested applications</b>	<b>Suitable for:</b> ICC/IF, WB
<b>Species reactivity</b>	<b>Reacts with:</b> Human <b>Predicted to work with:</b> Mouse, Rat, Cow, Pig 
<b>Immunogen</b>	Recombinant fragment corresponding to a region within amino acids 24 and 409 of IFRD1 (Uniprot ID O00458).
<b>Positive control</b>	MOLT4 and Raji whole cell lysates; HeLa cells
<b>General notes</b>	<p>The Life Science industry has been in the grips of a reproducibility crisis for a number of years. Abcam is leading the way in addressing this with our range of recombinant monoclonal antibodies and knockout edited cell lines for gold-standard validation. Please check that this product meets your needs before purchasing.</p> <p>If you have any questions, special requirements or concerns, please send us an inquiry and/or contact our Support team ahead of purchase. Recommended alternatives for this product can be found below, along with publications, customer reviews and Q&amp;As</p>

#### Properties

<b>Form</b>	Liquid
<b>Storage instructions</b>	Shipped at 4°C. Upon delivery aliquot. Store at -20°C or -80°C. Avoid freeze / thaw cycle.
<b>Storage buffer</b>	pH: 7.00 Preservative: 0.01% Thimerosal (merthiolate) Constituents: 1.21% Tris, 0.75% Glycine, 10% Glycerol (glycerin, glycerine)
<b>Purity</b>	Immunogen affinity purified
<b>Clonality</b>	Polyclonal
<b>Isotype</b>	IgG

#### Applications

## The Abpromise guarantee

Our **Abpromise guarantee** covers the use of ab137633 in the following tested applications.

The application notes include recommended starting dilutions; optimal dilutions/concentrations should be determined by the end user.

Application	Abreviews	Notes
ICC/IF		1/100 - 1/1000.
WB		1/500 - 1/3000. Predicted molecular weight: 50 kDa.

## Target

### Function

Could play a role in regulating gene activity in the proliferative and/or differentiative pathways induced by NGF. May be an autocrine factor that attenuates or amplifies the initial ligand-induced signal.

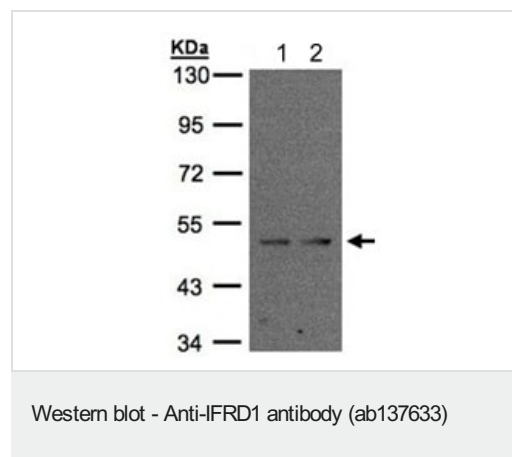
### Tissue specificity

Expressed in a variety of tissues.

### Sequence similarities

Belongs to the IFRD family.

## Images



**All lanes :** Anti-IFRD1 antibody (ab137633) at 1/2000 dilution

**Lane 1 :** MOLT4 whole cell lysate

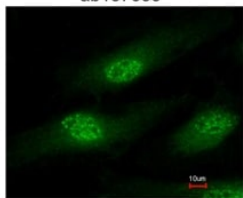
**Lane 2 :** Raji whole cell lysate

Lysates/proteins at 30 µg per lane.

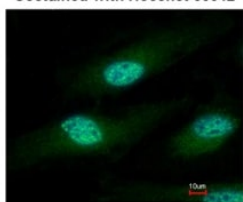
**Predicted band size:** 50 kDa

10% SDS Page

ab137633



Costained with Hoechst 33342



Immunocytochemistry/ Immunofluorescence - Anti-IFRD1 antibody (ab137633)

Immunofluorescence analysis of paraformaldehyde-fixed HeLa, labelling IFRD1 using ab137633 at 1/500 dilution. Lower panel merged with DNA probe.

**Please note:** All products are "FOR RESEARCH USE ONLY. NOT FOR USE IN DIAGNOSTIC PROCEDURES"

### Our Abpromise to you: Quality guaranteed and expert technical support

---

- Replacement or refund for products not performing as stated on the datasheet
- Valid for 12 months from date of delivery
- Response to your inquiry within 24 hours
- We provide support in Chinese, English, French, German, Japanese and Spanish
- Extensive multi-media technical resources to help you
- We investigate all quality concerns to ensure our products perform to the highest standards

If the product does not perform as described on this datasheet, we will offer a refund or replacement. For full details of the Abpromise, please visit <https://www.abcam.com/abpromise> or contact our technical team.

### Terms and conditions

---

- Guarantee only valid for products bought direct from Abcam or one of our authorized distributors