

## Product datasheet

# Anti-IFT46 antibody ab122422

[4 References](#) [2 Images](#)

### Overview

---

<b>Product name</b>	Anti-IFT46 antibody
<b>Description</b>	Rabbit polyclonal to IFT46
<b>Host species</b>	Rabbit
<b>Tested applications</b>	<b>Suitable for:</b> ICC/IF, IHC-P
<b>Species reactivity</b>	<b>Reacts with:</b> Human
<b>Immunogen</b>	antigen sequence: ETDSDSDDDD EEHGAPLEGA YDPADYEHLP VSAEIKELFQ YISRYTPQLI DLDHKLKPFIPDFIPAVGDI DAFLKVPRPD GKPDNLGLLV, corresponding to amino acids 44-133 of Human IFT46. <a href="#">Run BLAST with Expasy</a> <a href="#">Run BLAST with NCBI</a>
<b>Positive control</b>	Human bronchus tissue
<b>General notes</b>	<p>The Life Science industry has been in the grips of a reproducibility crisis for a number of years. Abcam is leading the way in addressing this with our range of recombinant monoclonal antibodies and knockout edited cell lines for gold-standard validation. Please check that this product meets your needs before purchasing.</p> <p>If you have any questions, special requirements or concerns, please send us an inquiry and/or contact our Support team ahead of purchase. Recommended alternatives for this product can be found below, along with publications, customer reviews and Q&amp;As</p>

### Properties

---

<b>Form</b>	Liquid
<b>Storage instructions</b>	Shipped at 4°C. Upon delivery aliquot and store at -20°C. Avoid freeze / thaw cycles.
<b>Storage buffer</b>	pH: 7.20 Preservative: 0.02% Sodium azide Constituents: 59% PBS, 40% Glycerol
<b>Purity</b>	Immunogen affinity purified
<b>Clonality</b>	Polyclonal
<b>Isotype</b>	IgG

### Applications

---

## The Abpromise guarantee

Our **Abpromise guarantee** covers the use of ab122422 in the following tested applications.

The application notes include recommended starting dilutions; optimal dilutions/concentrations should be determined by the end user.

Application	Abreviews	Notes
ICC/IF		Use a concentration of 1 - 4 µg/ml. Recommend PFA Fixation and Triton X-100 treatment
IHC-P		1/500 - 1/1000. Perform heat mediated antigen retrieval with citrate buffer pH 6 before commencing with IHC staining protocol.

## Target

### Function

Forms part of a complex involved in intraflagellar transport (IFT), the bi-directional movement of particles required for the assembly, maintenance and functioning of primary cilia. May play a role in chondrocyte maturation and skeletogenesis.

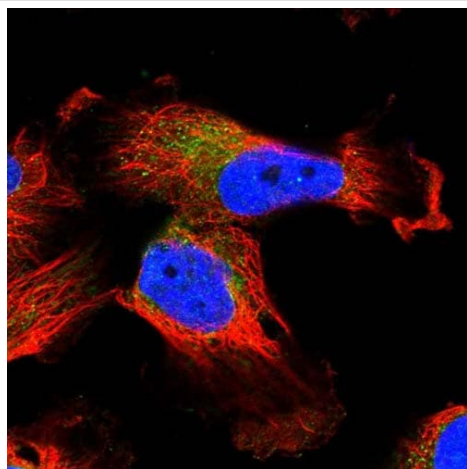
### Sequence similarities

Belongs to the IFT46 family.

### Cellular localization

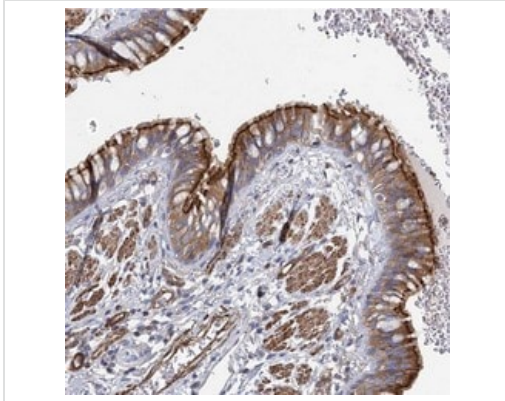
Cytoplasm > cytoskeleton > cilium basal body. Cell projection > cilium. Expression is concentrated at the cilium basal body but is also detected along the length of the cilium.

## Images



Immunocytochemistry/ Immunofluorescence - Anti-IFT46 antibody (ab122422)

Immunofluorescent staining of Human cell line U-251 MG shows positivity in cytoplasm. Recommended concentration of ab122422 1-4 µg/ml. Cells treated with PFA/Triton X-100.



ab122422 at 1/1000 dilution staining IFT46 in Paraffin-embedded Human bronchus tissue by Immunohistochemistry.

Immunohistochemistry (Formalin/PFA-fixed paraffin-embedded sections) - Anti-IFT46 antibody (ab122422)

**Please note:** All products are "FOR RESEARCH USE ONLY. NOT FOR USE IN DIAGNOSTIC PROCEDURES"

### Our Abpromise to you: Quality guaranteed and expert technical support

---

- Replacement or refund for products not performing as stated on the datasheet
- Valid for 12 months from date of delivery
- Response to your inquiry within 24 hours
- We provide support in Chinese, English, French, German, Japanese and Spanish
- Extensive multi-media technical resources to help you
- We investigate all quality concerns to ensure our products perform to the highest standards

If the product does not perform as described on this datasheet, we will offer a refund or replacement. For full details of the Abpromise, please visit <https://www.abcam.com/abpromise> or contact our technical team.

### Terms and conditions

---

- Guarantee only valid for products bought direct from Abcam or one of our authorized distributors