




## Product datasheet

### Anti-IFT88 antibody ab42497

★★★★★ [2 Abreviews](#) [11 References](#) [4 Images](#)

#### Overview

<b>Product name</b>	Anti-IFT88 antibody
<b>Description</b>	Goat polyclonal to IFT88
<b>Host species</b>	Goat
<b>Specificity</b>	This antibody is expected to recognise both reported isoforms (NP_783195.2; NP_006522.2).
<b>Tested applications</b>	<b>Suitable for:</b> ICC/IF, Flow Cyt (Intra), WB
<b>Species reactivity</b>	<b>Reacts with:</b> Mouse, Human <b>Predicted to work with:</b> Rat, Dog 
<b>Immunogen</b>	Synthetic peptide corresponding to Human IFT88 aa 804-816 (C terminal). Sequence: C-KKRIDEDDFADEE <div>  <a href="#">Run BLAST with</a>  <a href="#">Run BLAST with</a> </div>
<b>Positive control</b>	WB: A549 cell lysate and Mouse testis tissue lysate; ICC/IF: HepG2 cells; Flow Cyt (intra): HepG2 cells.
<b>General notes</b>	<p>The Life Science industry has been in the grips of a reproducibility crisis for a number of years. Abcam is leading the way in addressing this with our range of recombinant monoclonal antibodies and knockout edited cell lines for gold-standard validation. Please check that this product meets your needs before purchasing.</p> <p>If you have any questions, special requirements or concerns, please send us an inquiry and/or contact our Support team ahead of purchase. Recommended alternatives for this product can be found below, along with publications, customer reviews and Q&amp;As</p>

#### Properties

<b>Form</b>	Liquid
<b>Storage instructions</b>	Shipped at 4°C. Upon delivery aliquot and store at -20°C. Avoid freeze / thaw cycles.
<b>Storage buffer</b>	pH: 7.30 Preservative: 0.02% Sodium azide Constituent: 0.5% BSA
<b>Purity</b>	Immunogen affinity purified
<b>Purification notes</b>	Purified from goat serum by ammonium sulphate precipitation followed by antigen affinity

chromatography using the immunizing peptide.

**Clonality**

Polyclonal

**Isotype**

IgG

**Applications**

**The Abpromise guarantee**

Our **Abpromise guarantee** covers the use of ab42497 in the following tested applications.

The application notes include recommended starting dilutions; optimal dilutions/concentrations should be determined by the end user.

Application	Abreviews	Notes
ICC/IF	★★★★★ (1)	Use a concentration of 10 µg/ml.
Flow Cyt (Intra)		Use a concentration of 10 µg/ml.
WB		Use a concentration of 1 - 3 µg/ml. Detects a band of approximately 90 kDa (predicted molecular weight: 94 kDa). 1 hour primary incubation is recommended for this product.

**Target**

**Function**

Involved in primary cilium biogenesis.

**Tissue specificity**

Expressed in the heart, brain, liver, lung, kidney, skeletal muscle and pancreas.

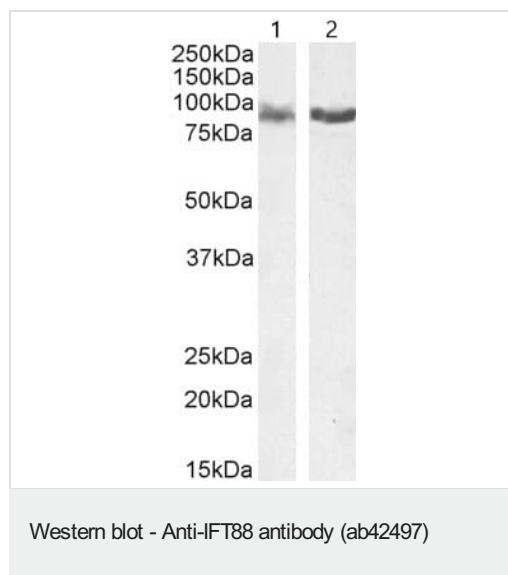
**Sequence similarities**

Contains 12 TPR repeats.

**Cellular localization**

Cytoplasm > cytoskeleton > centrosome > centriole. Cytoplasm > cytoskeleton > cilium basal body.

**Images**



**All lanes :** Anti-IFT88 antibody (ab42497) at 3 µg/ml

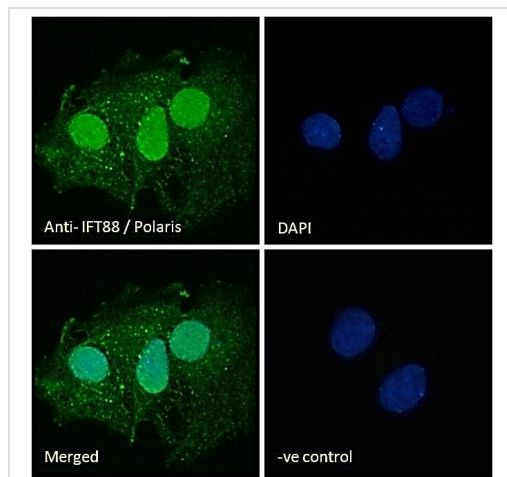
**Lane 1 :** A549 (human lung carcinoma cell line) whole cell lysate

**Lane 2 :** Mouse testis tissue lysate

Lysates/proteins at 35 µg per lane.

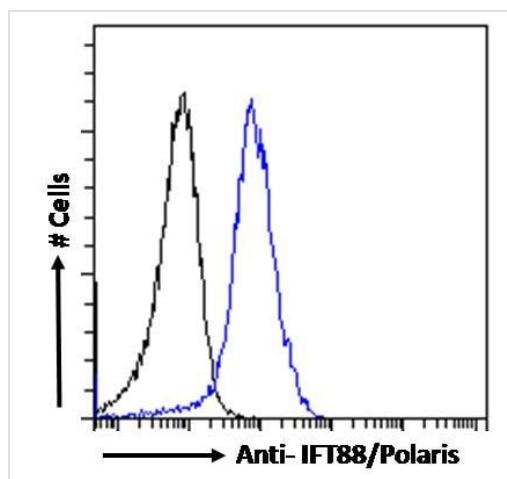
**Predicted band size:** 94 kDa

Primary incubation 1 hour at room temperature. Detected by chemiluminescence.



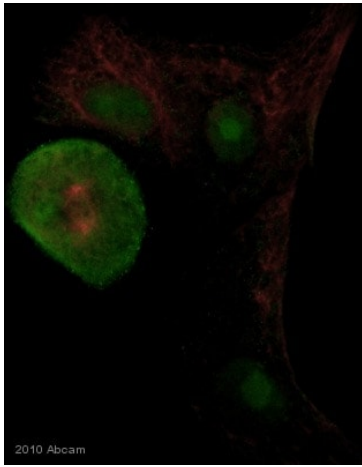
Immunocytochemistry/ Immunofluorescence - Anti-IFT88 antibody (ab42497)

Immunofluorescence analysis of paraformaldehyde fixed HepG2 cells labeling IFT88 with ab42497. Cells permeabilized with 0.15% Triton. Primary incubation 1hr (10  $\mu\text{g/mL}$ ) followed by Alexa Fluor® 488 conjugated secondary antibody (2  $\mu\text{g/mL}$ ), showing nuclear and cytoplasmic staining. The nuclear stain is DAPI (blue). Negative control: Unimmunized goat IgG (10  $\mu\text{g/mL}$ ) followed by Alexa Fluor® 488 secondary antibody (2  $\mu\text{g/mL}$ ).



Flow Cytometry (Intracellular) - Anti-IFT88 antibody (ab42497)

Flow cytometric analysis of paraformaldehyde fixed HepG2 cells labeling IFT88 with ab42497 (blue line). Cells permeabilized with 0.5% Triton. Primary incubation 1hr (10  $\mu\text{g/mL}$ ) followed by Alexa Fluor 488® secondary antibody (1  $\mu\text{g/mL}$ ). IgG control: Unimmunized goat IgG (black line) followed by Alexa Fluor® 488 secondary antibody.



ab42497 staining IFT88 in human prostate epithelial primary cells by Immunocytochemistry/ Immunofluorescence. Cells were fixed with paraformaldehyde and permeabilized with 0.5% Triton ×100. Samples were incubated with primary antibody (1/100:in DMEM w/ 10% FBS) for 1 hour at 200C. An Alexa Fluor® 546-conjugated donkey polyclonal to goat IgG was used undiluted as secondary antibody.

Immunocytochemistry/ Immunofluorescence - Anti-IFT88 antibody (ab42497)

This image is a courtesy of Luke Hofkamp

**Please note:** All products are "FOR RESEARCH USE ONLY. NOT FOR USE IN DIAGNOSTIC PROCEDURES"

### Our Abpromise to you: Quality guaranteed and expert technical support

- Replacement or refund for products not performing as stated on the datasheet
- Valid for 12 months from date of delivery
- Response to your inquiry within 24 hours
- We provide support in Chinese, English, French, German, Japanese and Spanish
- Extensive multi-media technical resources to help you
- We investigate all quality concerns to ensure our products perform to the highest standards

If the product does not perform as described on this datasheet, we will offer a refund or replacement. For full details of the Abpromise, please visit <https://www.abcam.com/abpromise> or contact our technical team.

### Terms and conditions

- Guarantee only valid for products bought direct from Abcam or one of our authorized distributors