

## Product datasheet

# Anti-Ig kappa chain V-ID region 16 antibody [L1C1] ab208164

1 Image

### Overview

<b>Product name</b>	Anti-Ig kappa chain V-ID region 16 antibody [L1C1]
<b>Description</b>	Mouse monoclonal [L1C1] to Ig kappa chain V-ID region 16
<b>Host species</b>	Mouse
<b>Tested applications</b>	<b>Suitable for:</b> IHC-P
<b>Species reactivity</b>	<b>Reacts with:</b> Human
<b>Immunogen</b>	Tissue, cells or virus corresponding to Human Ig kappa chain V-ID region 16. B lymphoma cells are used as immunogen for this antibody. Database link: <a href="#">P01601</a>
<b>Positive control</b>	Human tonsil tissue.
<b>General notes</b>	<p>The Life Science industry has been in the grips of a reproducibility crisis for a number of years. Abcam is leading the way in addressing this with our range of recombinant monoclonal antibodies and knockout edited cell lines for gold-standard validation. Please check that this product meets your needs before purchasing.</p> <p>If you have any questions, special requirements or concerns, please send us an inquiry and/or contact our Support team ahead of purchase. Recommended alternatives for this product can be found below, along with publications, customer reviews and Q&amp;As</p>

### Properties

<b>Form</b>	Liquid
<b>Storage instructions</b>	Shipped at 4°C. Store at +4°C short term (1-2 weeks). Upon delivery aliquot. Store at -20°C long term. Avoid freeze / thaw cycle.
<b>Storage buffer</b>	Preservative: 0.05% Sodium azide Constituents: 0.05% BSA, 99% PBS
<b>Purity</b>	Protein G purified
<b>Clonality</b>	Monoclonal
<b>Clone number</b>	L1C1
<b>Isotype</b>	IgG1
<b>Light chain type</b>	kappa

## Applications

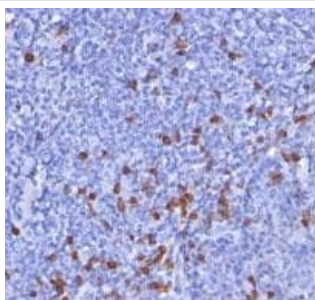
**The Abpromise guarantee** Our **Abpromise guarantee** covers the use of ab208164 in the following tested applications. The application notes include recommended starting dilutions; optimal dilutions/concentrations should be determined by the end user.

Application	Abreviews	Notes
IHC-P		1/400.

## Target

**Cellular localization** Plasma membrane

## Images



Immunohistochemical analysis of formalin-fixed, paraffin-embedded Human tonsil tissue labeling Ig kappa chain V-ID region 16 with ab208164 at a 1/400 dilution.

Immunohistochemistry (Formalin/PFA-fixed paraffin-embedded sections) - Anti-Ig kappa chain V-ID region 16 antibody [L1C1] (ab208164)

**Please note:** All products are "FOR RESEARCH USE ONLY. NOT FOR USE IN DIAGNOSTIC PROCEDURES"

## Our Abpromise to you: Quality guaranteed and expert technical support

- Replacement or refund for products not performing as stated on the datasheet
- Valid for 12 months from date of delivery
- Response to your inquiry within 24 hours
- We provide support in Chinese, English, French, German, Japanese and Spanish
- Extensive multi-media technical resources to help you
- We investigate all quality concerns to ensure our products perform to the highest standards

If the product does not perform as described on this datasheet, we will offer a refund or replacement. For full details of the Abpromise, please visit <https://www.abcam.com/abpromise> or contact our technical team.

## Terms and conditions

---

- Guarantee only valid for products bought direct from Abcam or one of our authorized distributors