


Anti-IGBP1 antibody [EPR12315] αb170911

Recombinant RabMAb

1 References 6 Images

Overview

Product name	Anti-IGBP1 antibody [EPR12315]
Description	Rabbit monoclonal [EPR12315] to IGBP1
Host species	Rabbit
Tested applications	<b>Suitable for:</b> Flow Cyt (Intra), WB, ICC/IF, IHC-P <b>Unsuitable for:</b> IP
Species reactivity	<b>Reacts with:</b> Human <b>Predicted to work with:</b> Mouse, Rat 
Immunogen	Synthetic peptide. This information is proprietary to Abcam and/or its suppliers.
Positive control	K562, Jurkat, HeLa and Raji cell lysates; Human pancreas tissue; Human tonsil tissue; K562 cells; HeLa cells
General notes	<p>This product is a recombinant monoclonal antibody, which offers several advantages including:</p> <ul style="list-style-type: none"><li>- High batch-to-batch consistency and reproducibility</li><li>- Improved sensitivity and specificity</li><li>- Long-term security of supply</li><li>- Animal-free production</li></ul> <p>For more information <a href="#">see here</a>.</p> <p>Our RabMAb<sup>®</sup> technology is a patented hybridoma-based technology for making rabbit monoclonal antibodies. For details on our patents, please refer to <a href="#">RabMAb<sup>®</sup> patents</a>.</p>

Properties

Form	Liquid
Storage instructions	Shipped at 4°C. Store at +4°C short term (1-2 weeks). Upon delivery aliquot. Store at -20°C long term. Avoid freeze / thaw cycle.
Storage buffer	pH: 7.20 Preservative: 0.01% Sodium azide Constituents: 9% PBS, 40% Glycerol (glycerin, glycerine), 0.05% BSA, 50% Tissue culture supernatant
Purity	Tissue culture supernatant
Clonality	Monoclonal

Clone number                      EPR12315

Isotype                                IgG

## Applications

**The Abpromise guarantee**                      Our **Abpromise guarantee** covers the use of ab170911 in the following tested applications. The application notes include recommended starting dilutions; optimal dilutions/concentrations should be determined by the end user.

Application	Abreviews	Notes
Flow Cyt (Intra)		1/100 - 1/500. <b>ab172730</b> - Rabbit monoclonal IgG, is suitable for use as an isotype control with this antibody.
WB		1/1000 - 1/5000. Predicted molecular weight: 39 kDa.
ICC/IF		1/100 - 1/250.
IHC-P		1/100 - 1/250. Antigen retrieval is recommended.

**Application notes**                                Is unsuitable for IP.

## Target

**Function**    Associated to surface IgM-receptor; may be involved in signal transduction. May be involved in regulation of the catalytic activity of type 2A-related serine/threonine phosphatases.

**Tissue specificity**                                      Ubiquitously expressed with highest levels in heart, skeletal muscle and pancreas.

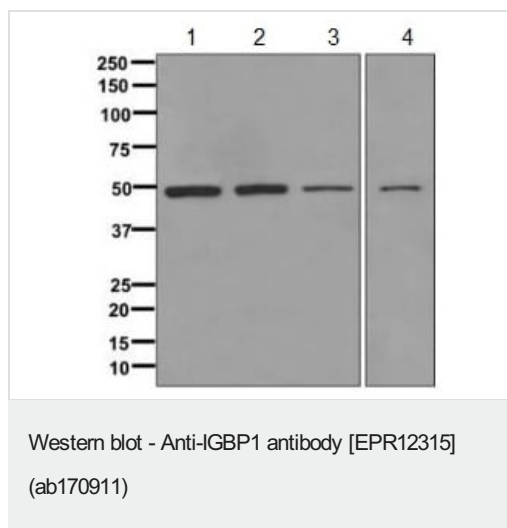
**Involvement in disease**                                Defects in IGBP1 are the cause of agenesis of the corpus callosum with mental retardation-ocular coloboma-micrognathia (ACCMRCM) [MIM:300472].

**Sequence similarities**                                      Belongs to the IGBP1/TAP42 family.

**Post-translational modifications**                      Phosphorylated.

**Cellular localization**                                      Cytoplasm.

## Images



**All lanes :** Anti-IGBP1 antibody [EPR12315] (ab170911) at 1/1000 dilution

**Lane 1 :** K562 cell lysate

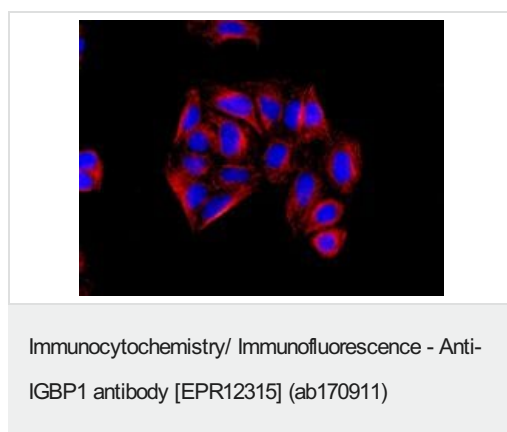
**Lane 2 :** Jurkat cell lysate

**Lane 3 :** HeLa cell lysate

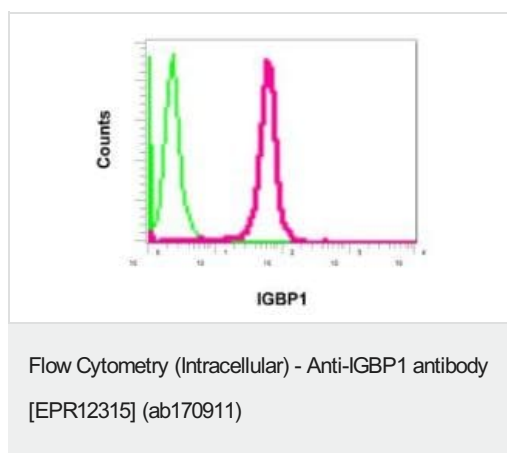
**Lane 4 :** Raji cell lysate

Lysates/proteins at 10 µg per lane.

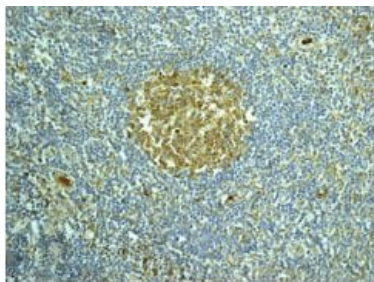
**Predicted band size:** 39 kDa



Immunofluorescent staining of HeLa cells labeling IGBP1 using ab170911 at 1/100 dilution (red). DAPI nuclear staining (blue).



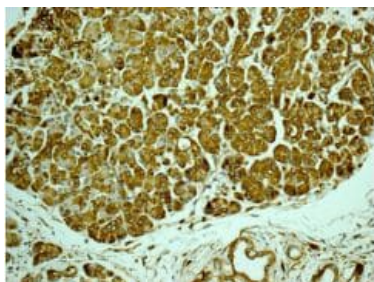
Intracellular flow cytometric analysis of permeabilized K562 cells labeling IGBP1 using ab170911 at 1/100 dilution (red) or a rabbit IgG negative (green).



Immunohistochemistry paraffin embedded sections -  
Anti-IGBP1 antibody [EPR12315] (ab170911)

Immunohistochemical analysis of paraffin-embedded Human tonsil tissue labeling IGBP1 using ab170911 at 1/100 dilution.

Perform heat mediated antigen retrieval with citrate buffer pH 6 before commencing with IHC staining protocol.



Immunohistochemistry paraffin embedded sections -  
Anti-IGBP1 antibody [EPR12315] (ab170911)

Immunohistochemical analysis of paraffin-embedded

Human pancreas tissue labeling IGBP1 using ab170911 at 1/100 dilution.

Perform heat mediated antigen retrieval with citrate buffer pH 6 before commencing with IHC staining protocol.

#### Why choose a recombinant antibody?



**Research with confidence**  
Consistent and reproducible results



**Long-term and scalable supply**  
Recombinant technology



**Success from the first experiment**  
Confirmed specificity



**Ethical standards compliant**  
Animal-free production

Anti-IGBP1 antibody [EPR12315] (ab170911)

**Please note:** All products are "FOR RESEARCH USE ONLY. NOT FOR USE IN DIAGNOSTIC PROCEDURES"

#### Our Abpromise to you: Quality guaranteed and expert technical support

- Replacement or refund for products not performing as stated on the datasheet
- Valid for 12 months from date of delivery
- Response to your inquiry within 24 hours
- We provide support in Chinese, English, French, German, Japanese and Spanish

- Extensive multi-media technical resources to help you
- We investigate all quality concerns to ensure our products perform to the highest standards

If the product does not perform as described on this datasheet, we will offer a refund or replacement. For full details of the Abpromise, please visit <https://www.abcam.com/abpromise> or contact our technical team.

#### **Terms and conditions**

---

- Guarantee only valid for products bought direct from Abcam or one of our authorized distributors