


# Anti-IGBP1 antibody [EPR12315] - BSA and Azide free ab238932

Recombinant RabMAb

5 Images

### Overview

Product name	Anti-IGBP1 antibody [EPR12315] - BSA and Azide free
Description	Rabbit monoclonal [EPR12315] to IGBP1 - BSA and Azide free
Host species	Rabbit
Tested applications	<b>Suitable for:</b> Flow Cyt (Intra), IHC-P, ICC/IF, WB <b>Unsuitable for:</b> IP
Species reactivity	<b>Reacts with:</b> Human <b>Predicted to work with:</b> Mouse, Rat 
Immunogen	Synthetic peptide. This information is proprietary to Abcam and/or its suppliers.
Positive control	IHC-P: Human pancreas tissue.
General notes	<p>ab238932 is the carrier-free version of <a href="#">ab170911</a>.</p> <p>Our <b>carrier-free</b> antibodies are typically supplied in a PBS-only formulation, purified and free of BSA, sodium azide and glycerol. The carrier-free buffer and high concentration allow for increased conjugation efficiency.</p> <p>This conjugation-ready format is designed for use with fluorochromes, metal isotopes, oligonucleotides, and enzymes, which makes them ideal for antibody labelling, functional and cell-based assays, flow-based assays (e.g. mass cytometry) and Multiplex Imaging applications.</p> <p>Use our <b>conjugation kits</b> for antibody conjugates that are ready-to-use in as little as 20 minutes with &lt;1 minute hands-on-time and 100% antibody recovery: available for fluorescent dyes, HRP, biotin and gold.</p> <p>This product is compatible with the Maxpar<sup>®</sup> Antibody Labeling Kit from Fluidigm, without the need for antibody preparation. Maxpar<sup>®</sup> is a trademark of Fluidigm Canada Inc.</p> <p>This product is a recombinant monoclonal antibody, which offers several advantages including:</p> <ul style="list-style-type: none"> <li>- High batch-to-batch consistency and reproducibility</li> <li>- Improved sensitivity and specificity</li> <li>- Long-term security of supply</li> <li>- Animal-free production</li> </ul> <p>For more information <a href="#">see here</a>.</p> <p>Our RabMAb<sup>®</sup> technology is a patented hybridoma-based technology for making rabbit</p>

monoclonal antibodies. For details on our patents, please refer to [\*\*RabMAb®\*\* patents](#).

## Properties

<b>Form</b>	Liquid
<b>Storage instructions</b>	Shipped at 4°C. Store at +4°C. Do Not Freeze.
<b>Storage buffer</b>	pH: 7.2 Constituent: PBS
<b>Carrier free</b>	Yes
<b>Purity</b>	Protein A purified
<b>Clonality</b>	Monoclonal
<b>Clone number</b>	EPR12315
<b>Isotype</b>	IgG

## Applications

**The Abpromise guarantee** Our [\*\*Abpromise guarantee\*\*](#) covers the use of ab238932 in the following tested applications. The application notes include recommended starting dilutions; optimal dilutions/concentrations should be determined by the end user.

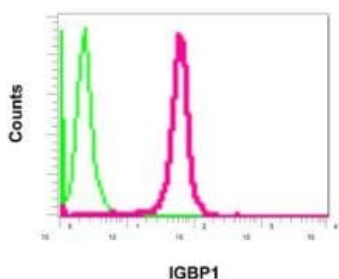
Application	Abreviews	Notes
<b>Flow Cyt (Intra)</b>		Use at an assay dependent concentration.
<b>IHC-P</b>		Use at an assay dependent concentration. Antigen retrieval is recommended.
<b>ICC/IF</b>		Use at an assay dependent concentration.
<b>WB</b>		Use at an assay dependent concentration. Predicted molecular weight: 39 kDa.

**Application notes** Is unsuitable for IP.

## Target

<b>Function</b>	Associated to surface IgM-receptor; may be involved in signal transduction. May be involved in regulation of the catalytic activity of type 2A-related serine/threonine phosphatases.
<b>Tissue specificity</b>	Ubiquitously expressed with highest levels in heart, skeletal muscle and pancreas.
<b>Involvement in disease</b>	Defects in IGBP1 are the cause of agenesis of the corpus callosum with mental retardation-ocular coloboma-micrognathia (ACCMRCM) [MIM:300472].
<b>Sequence similarities</b>	Belongs to the IGBP1/TAP42 family.
<b>Post-translational modifications</b>	Phosphorylated.
<b>Cellular localization</b>	Cytoplasm.

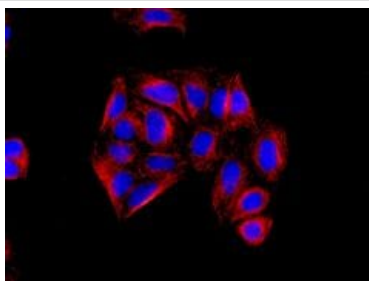
## Images



Flow Cytometry (Intracellular) - Anti-IGBP1 antibody [EPR12315] - BSA and Azide free (ab238932)

Intracellular flow cytometric analysis of permeabilized K562 cells labeling IGBP1 using **ab170911** at 1/100 dilution (red) or a rabbit IgG negative (green).

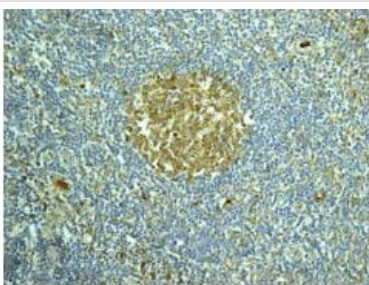
This data was developed using the same antibody clone in a different buffer formulation containing PBS, BSA, glycerol, and sodium azide (**ab170911**).



Immunocytochemistry/ Immunofluorescence - Anti-IGBP1 antibody [EPR12315] - BSA and Azide free (ab238932)

Immunofluorescent staining of HeLa cells labeling IGBP1 using **ab170911** at 1/100 dilution (red). DAPI nuclear staining (blue).

This data was developed using the same antibody clone in a different buffer formulation containing PBS, BSA, glycerol, and sodium azide (**ab170911**).

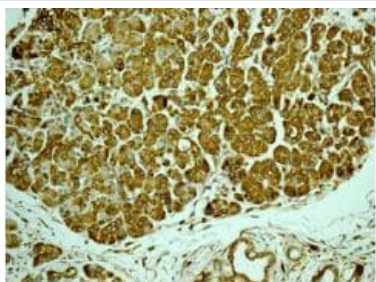


Immunohistochemistry paraffin embedded sections - Anti-IGBP1 antibody [EPR12315] - BSA and Azide free (ab238932)

Immunohistochemical analysis of paraffin-embedded Human tonsil tissue labeling IGBP1 using **ab170911** at 1/100 dilution.

This data was developed using the same antibody clone in a different buffer formulation containing PBS, BSA, glycerol, and sodium azide (**ab170911**).

Perform heat mediated antigen retrieval with citrate buffer pH 6 before commencing with IHC staining protocol.



Immunohistochemistry paraffin embedded sections -  
Anti-IGBP1 antibody [EPR12315] - BSA and Azide  
free (ab238932)

Immunohistochemical analysis of paraffin-embedded  
Human pancreas tissue labeling IGBP1 using **ab170911** at 1/100  
dilution.

This data was developed using the same antibody clone in a  
different buffer formulation containing PBS, BSA, glycerol, and  
sodium azide (**ab170911**).

Perform heat mediated antigen retrieval with citrate buffer pH 6  
before commencing with IHC staining protocol.

#### Why choose a recombinant antibody?



**Research with  
confidence**  
Consistent and  
reproducible results



**Long-term and  
scalable supply**  
Recombinant  
technology



**Success from the  
first experiment**  
Confirmed  
specificity



**Ethical standards  
compliant**  
Animal-free  
production

Anti-IGBP1 antibody [EPR12315] - BSA and Azide  
free (ab238932)

**Please note:** All products are "FOR RESEARCH USE ONLY. NOT FOR USE IN DIAGNOSTIC PROCEDURES"

#### Our Abpromise to you: Quality guaranteed and expert technical support

- Replacement or refund for products not performing as stated on the datasheet
- Valid for 12 months from date of delivery
- Response to your inquiry within 24 hours
- We provide support in Chinese, English, French, German, Japanese and Spanish
- Extensive multi-media technical resources to help you
- We investigate all quality concerns to ensure our products perform to the highest standards

If the product does not perform as described on this datasheet, we will offer a refund or replacement. For full details of the Abpromise, please visit <https://www.abcam.com/abpromise> or contact our technical team.

#### **Terms and conditions**

---

- Guarantee only valid for products bought direct from Abcam or one of our authorized distributors