




Product datasheet

Anti-IGF1 antibody ab106836

★★★★★ [3 Abreviews](#) [12 References](#) [2 Images](#)

Overview

Product name	Anti-IGF1 antibody
Description	Goat polyclonal to IGF1
Host species	Goat
Tested applications	Suitable for: WB, ICC, IHC-P
Species reactivity	Reacts with: Human Predicted to work with: Mouse, Rat, Rabbit, Horse, Chicken, Cow, Dog, Pig 
Immunogen	Peptide with sequence C-RSVRAQRHTD , from the internal region of human IGF1 sequence according to NP_001104753.1; NP_001104754.1; NP_001104755.1; NP_000609.1.  Run BLAST with  Run BLAST with
Positive control	ICC: Human HEK-293 cells; WB: Human uterus tissue lysate; IHC-P: Human spleen tissue.
General notes	<p>The Life Science industry has been in the grips of a reproducibility crisis for a number of years. Abcam is leading the way in addressing this with our range of recombinant monoclonal antibodies and knockout edited cell lines for gold-standard validation. Please check that this product meets your needs before purchasing.</p> <p>If you have any questions, special requirements or concerns, please send us an inquiry and/or contact our Support team ahead of purchase. Recommended alternatives for this product can be found below, along with publications, customer reviews and Q&As</p>

Properties

Form	Liquid
Storage instructions	Shipped at 4°C. Upon delivery aliquot and store at -20°C. Avoid freeze / thaw cycles.
Storage buffer	pH: 7.30 Preservative: 0.02% Sodium azide Constituents: Tris buffered saline, 0.5% BSA
Purity	Immunogen affinity purified
Purification notes	Purified from goat serum by ammonium sulphate precipitation followed by antigen affinity chromatography using the immunizing peptide.

Clonality	Polyclonal
Isotype	IgG

Applications

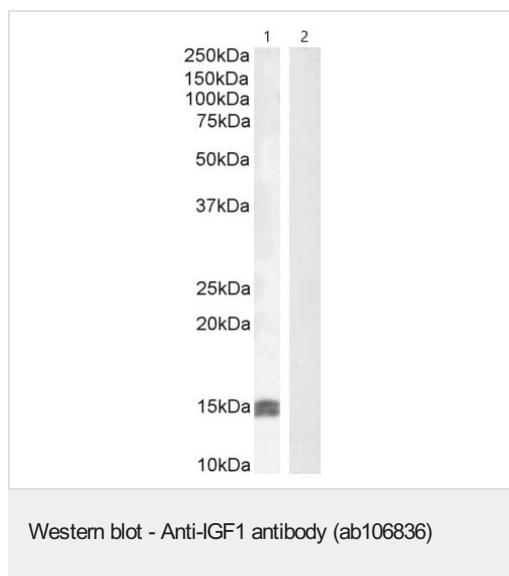
The Abpromise guarantee Our **Abpromise guarantee** covers the use of ab106836 in the following tested applications. The application notes include recommended starting dilutions; optimal dilutions/concentrations should be determined by the end user.

Application	Abreviews	Notes
WB	★★★★★ (2)	Use a concentration of 0.5 - 2 µg/ml. Detects a band of approximately 15 kDa (predicted molecular weight: 22 kDa). 1 hour primary incubation is recommended for this product.
ICC		Use a concentration of 10 µg/ml.
IHC-P		Use a concentration of 3.75 µg/ml. Perform heat mediated antigen retrieval with citrate buffer pH 6 before commencing with IHC staining protocol.

Target

Function	The insulin-like growth factors, isolated from plasma, are structurally and functionally related to insulin but have a much higher growth-promoting activity. May be a physiological regulator of [1-14C]-2-deoxy-D-glucose (2DG) transport and glycogen synthesis in osteoblasts. Stimulates glucose transport in rat bone-derived osteoblastic (PyMS) cells and is effective at much lower concentrations than insulin, not only regarding glycogen and DNA synthesis but also with regard to enhancing glucose uptake.
Involvement in disease	Defects in IGF1 are the cause of insulin-like growth factor I deficiency (IGF1 deficiency) [MIM:608747]. IGF1 deficiency is an autosomal recessive disorder characterized by growth retardation, sensorineural deafness and mental retardation.
Sequence similarities	Belongs to the insulin family.
Cellular localization	Secreted.
Form	There are 2 isoforms produced by alternative splicing. Isoform 1 also known as: IGF-IB; Isoform 2 also known as: IGF-IA.

Images



All lanes : Anti-IGF1 antibody (ab106836) at 0.5 µg/ml

Lane 1 : Human uterus tissue lysate in RIPA buffer

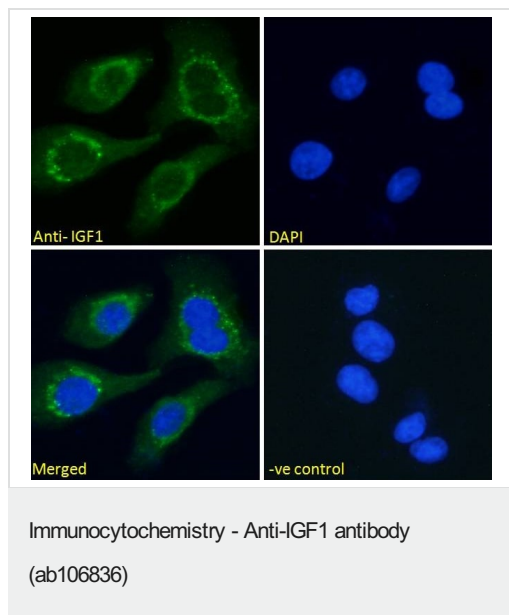
Lane 2 : HepG2 (human liver hepatocellular carcinoma cell line) whole cell lysate in RIPA buffer

Lysates/proteins at 35 µg per lane.

Predicted band size: 22 kDa

Observed band size: 15 kDa

Primary incubation for 1 hour at room temperature. Detected by chemiluminescence.



Immunocytochemistry analysis of paraformaldehyde fixed HEK-293 (human epithelial cell line from embryonic kidney) cells, permeabilized with 0.15% Triton. Primary incubation for 1 hour at 10 µg/mL followed by Alexa Fluor® 488 secondary antibody at 2 µg/mL. The nuclear stain is DAPI (blue).

Negative control: Unimmunized goat IgG (10 µg/mL) followed by Alexa Fluor® 488 secondary antibody (2 µg/mL).

Please note: All products are "FOR RESEARCH USE ONLY. NOT FOR USE IN DIAGNOSTIC PROCEDURES"

Our Abpromise to you: Quality guaranteed and expert technical support

- Replacement or refund for products not performing as stated on the datasheet

- Valid for 12 months from date of delivery
- Response to your inquiry within 24 hours
- We provide support in Chinese, English, French, German, Japanese and Spanish
- Extensive multi-media technical resources to help you
- We investigate all quality concerns to ensure our products perform to the highest standards

If the product does not perform as described on this datasheet, we will offer a refund or replacement. For full details of the Abpromise, please visit <https://www.abcam.com/abpromise> or contact our technical team.

Terms and conditions

- Guarantee only valid for products bought direct from Abcam or one of our authorized distributors