

## Product datasheet

# Anti-IGF1 antibody ab63926

★★★★☆ [5 Abreviews](#) [7 References](#) [1 Image](#)

### Overview

---

<b>Product name</b>	Anti-IGF1 antibody
<b>Description</b>	Rabbit polyclonal to IGF1
<b>Host species</b>	Rabbit
<b>Tested applications</b>	<b>Suitable for:</b> WB
<b>Species reactivity</b>	<b>Reacts with:</b> Recombinant fragment
<b>Immunogen</b>	Recombinant murine IGF1
<b>General notes</b>	<p>This product is manufactured by BioVision, an Abcam company and was previously called 5120R IGF-I Antibody. 5120R-100 is the same size as the 100 µg size of ab63926.</p> <p>The Life Science industry has been in the grips of a reproducibility crisis for a number of years. Abcam is leading the way in addressing this with our range of recombinant monoclonal antibodies and knockout edited cell lines for gold-standard validation. Please check that this product meets your needs before purchasing.</p> <p>If you have any questions, special requirements or concerns, please send us an inquiry and/or contact our Support team ahead of purchase. Recommended alternatives for this product can be found below, along with publications, customer reviews and Q&amp;As</p>

### Properties

---

<b>Form</b>	Liquid
<b>Storage instructions</b>	Shipped at 4°C. Upon delivery aliquot. Store at -20°C long term. Avoid freeze / thaw cycle.
<b>Storage buffer</b>	pH: 7.20 Preservative: 0.01% Thimerosal (merthiolate) Constituents: PBS, 30% Glycerol (glycerin, glycerine), 0.5% BSA
<b>Purity</b>	Immunogen affinity purified
<b>Clonality</b>	Polyclonal
<b>Isotype</b>	IgG

### Applications

---

**The Abpromise guarantee** Our **Abpromise guarantee** covers the use of ab63926 in the following tested applications.

The application notes include recommended starting dilutions; optimal dilutions/concentrations should be determined by the end user.

Application	Abreviews	Notes
WB	★★★★☆ (5)	Use a concentration of 0.5 - 4 µg/ml. Detects a band of approximately 9 kDa (predicted molecular weight: 17 kDa).

## Target

### Function

The insulin-like growth factors, isolated from plasma, are structurally and functionally related to insulin but have a much higher growth-promoting activity. May be a physiological regulator of [1-14C]-2-deoxy-D-glucose (2DG) transport and glycogen synthesis in osteoblasts. Stimulates glucose transport in rat bone-derived osteoblastic (PyMS) cells and is effective at much lower concentrations than insulin, not only regarding glycogen and DNA synthesis but also with regard to enhancing glucose uptake.

### Involvement in disease

Defects in IGF1 are the cause of insulin-like growth factor I deficiency (IGF1 deficiency) [MIM:608747]. IGF1 deficiency is an autosomal recessive disorder characterized by growth retardation, sensorineural deafness and mental retardation.

### Sequence similarities

Belongs to the insulin family.

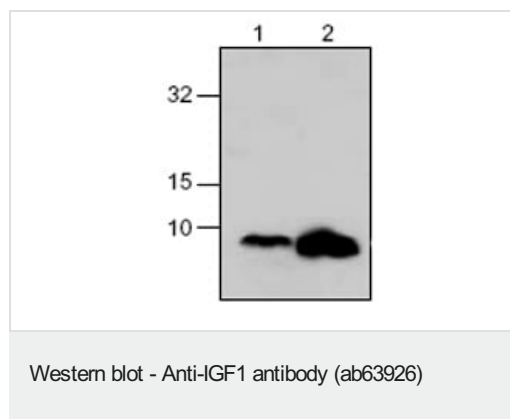
### Cellular localization

Secreted.

### Form

There are 2 isoforms produced by alternative splicing. Isoform 1 also known as: IGF-IB; Isoform 2 also known as: IGF-IA.

## Images



**All lanes :** Anti-IGF1 antibody (ab63926) at 4 µg/ml

**Lane 1 :** Recombinant murine IGF1 at 0.25 µg

**Lane 2 :** Recombinant murine IGF1 at 1 µg

**Predicted band size:** 17 kDa

**Observed band size:** 9 kDa

**Please note:** All products are "FOR RESEARCH USE ONLY. NOT FOR USE IN DIAGNOSTIC PROCEDURES"

## Our Abpromise to you: Quality guaranteed and expert technical support

- Replacement or refund for products not performing as stated on the datasheet
- Valid for 12 months from date of delivery
- Response to your inquiry within 24 hours

- We provide support in Chinese, English, French, German, Japanese and Spanish
- Extensive multi-media technical resources to help you
- We investigate all quality concerns to ensure our products perform to the highest standards

If the product does not perform as described on this datasheet, we will offer a refund or replacement. For full details of the Abpromise, please visit <https://www.abcam.com/abpromise> or contact our technical team.

### **Terms and conditions**

---

- Guarantee only valid for products bought direct from Abcam or one of our authorized distributors