

Product datasheet

Anti-IGF1 antibody [EPR5098(2)] ab133542

Recombinant RabMAb

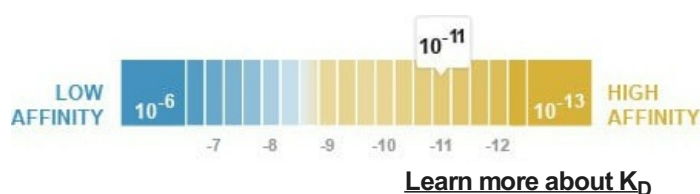
★★★★★ 1 Abreviews 5 References 4 Images

Overview

Product name	Anti-IGF1 antibody [EPR5098(2)]
Description	Rabbit monoclonal [EPR5098(2)] to IGF1
Host species	Rabbit
Tested applications	Suitable for: ELISA, WB Unsuitable for: IHC-P or IP
Species reactivity	Reacts with: Human
Immunogen	Synthetic peptide. This information is proprietary to Abcam and/or its suppliers.
Positive control	IGF1 recombinant protein
General notes	<p>This product is a recombinant monoclonal antibody, which offers several advantages including:</p> <ul style="list-style-type: none"> - High batch-to-batch consistency and reproducibility - Improved sensitivity and specificity - Long-term security of supply - Animal-free production <p>For more information see here.</p> <p>Our RabMAb[®] technology is a patented hybridoma-based technology for making rabbit monoclonal antibodies. For details on our patents, please refer to RabMAb[®] patents.</p> <p>Mouse, Rat: We have preliminary internal testing data to indicate this antibody may not react with these species. Please contact us for more information.</p>

Properties

Form	Liquid
Storage instructions	Shipped at 4°C. Store at -20°C. Stable for 12 months at -20°C.
Dissociation constant (K _D)	K _D = 4.20 x 10 ⁻¹¹ M



Storage buffer	pH: 7.2 Preservative: 0.05% Sodium azide Constituents: 40% Glycerol (glycerin, glycerine), 9.85% Tris glycine, 50% Tissue culture supernatant
Purity	Protein A purified
Clonality	Monoclonal
Clone number	EPR5098(2)
Isotype	IgG

Applications

The Abpromise guarantee Our **Abpromise guarantee** covers the use of ab133542 in the following tested applications. The application notes include recommended starting dilutions; optimal dilutions/concentrations should be determined by the end user.

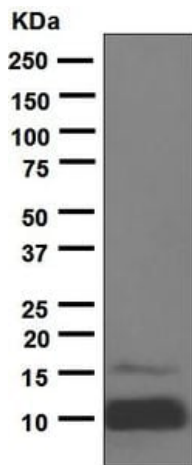
Application	Abreviews	Notes
ELISA		Use at an assay dependent concentration.
WB	★★★★★ (1)	1/1000 - 1/10000. Predicted molecular weight: 22 kDa. Tested with recombinant protein.

Application notes Is unsuitable for IHC-P or IP.

Target

Function	The insulin-like growth factors, isolated from plasma, are structurally and functionally related to insulin but have a much higher growth-promoting activity. May be a physiological regulator of [1-14C]-2-deoxy-D-glucose (2DG) transport and glycogen synthesis in osteoblasts. Stimulates glucose transport in rat bone-derived osteoblastic (PyMS) cells and is effective at much lower concentrations than insulin, not only regarding glycogen and DNA synthesis but also with regard to enhancing glucose uptake.
Involvement in disease	Defects in IGF1 are the cause of insulin-like growth factor I deficiency (IGF1 deficiency) [MIM:608747]. IGF1 deficiency is an autosomal recessive disorder characterized by growth retardation, sensorineural deafness and mental retardation.
Sequence similarities	Belongs to the insulin family.
Cellular localization	Secreted.
Form	There are 2 isoforms produced by alternative splicing. Isoform 1 also known as: IGF-IB; Isoform 2 also known as: IGF-IA.

Images

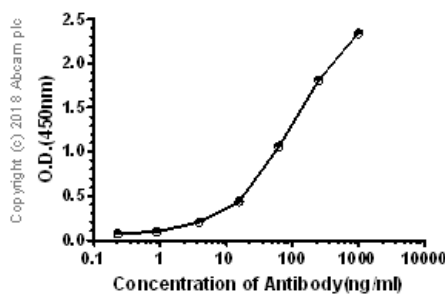


Western blot - Anti-IGF1 antibody [EPR5098(2)]
(ab133542)

Anti-IGF1 antibody [EPR5098(2)] (ab133542) at 1/1000 dilution +
Recombinant human IGF-I fragment at 0.005 μ g

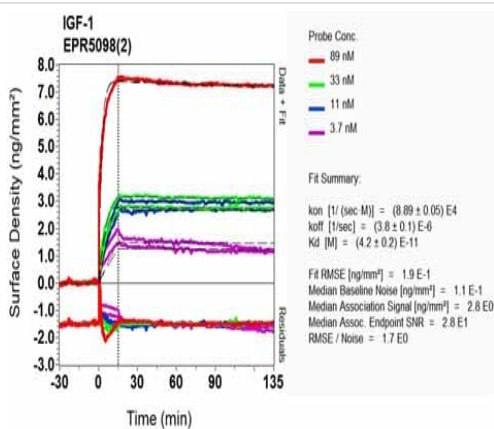
Predicted band size: 22 kDa

The recombinant IGF-I fragment corresponds to amino acids 49-118 of human IGF-1 with the molecular weight of 10kDa.



ELISA - Anti-IGF1 antibody [EPR5098(2)]
(ab133542)

Primary antibody, **ab33542** was used at concentrations between 0.1 - 1000ng/ml. An Alkaline Phosphatase AffiniPure Goat Anti-Rabbit IgG (H+L) was used as the secondary antibody at 1:2500 dilution. Antigen concentration was 1000ng/ml.



OIR-D Scanning - Anti-IGF1 antibody [EPR5098(2)]
(ab133542)

Equilibrium disassociation constant (K_D)

Learn more about K_D

[Click here to learn more about \$K_D\$](#)

Why choose a recombinant antibody?



Research with confidence
Consistent and reproducible results



Long-term and scalable supply
Recombinant technology



Success from the first experiment
Confirmed specificity



Ethical standards compliant
Animal-free production

Anti-IGF1 antibody [EPR5098(2)] (ab133542)

Please note: All products are "FOR RESEARCH USE ONLY. NOT FOR USE IN DIAGNOSTIC PROCEDURES"

Our Abpromise to you: Quality guaranteed and expert technical support

- Replacement or refund for products not performing as stated on the datasheet
- Valid for 12 months from date of delivery
- Response to your inquiry within 24 hours
- We provide support in Chinese, English, French, German, Japanese and Spanish
- Extensive multi-media technical resources to help you
- We investigate all quality concerns to ensure our products perform to the highest standards

If the product does not perform as described on this datasheet, we will offer a refund or replacement. For full details of the Abpromise, please visit <https://www.abcam.com/abpromise> or contact our technical team.

Terms and conditions

- Guarantee only valid for products bought direct from Abcam or one of our authorized distributors