


## Product datasheet

# Anti-IGF1 Receptor + Insulin Receptor antibody [EPR2334(2)] ab172965

Recombinant RabMAb

★★★★★ 1 Abreviews 2 References 3 Images

### Overview

Product name	Anti-IGF 1 Receptor + Insulin Receptor antibody [EPR2334(2)]
Description	Rabbit monoclonal [EPR2334(2)] to IGF1 Receptor + Insulin Receptor
Host species	Rabbit
Tested applications	<b>Suitable for:</b> WB, IP <b>Unsuitable for:</b> Flow Cyt, ICC/IF or IHC-P
Species reactivity	<b>Reacts with:</b> Human <b>Predicted to work with:</b> Mouse, Rat 
Immunogen	Synthetic peptide. This information is proprietary to Abcam and/or its suppliers.
Positive control	WB: 293T, HeLa, SK-OV-3, A549 cell lysates, fetal brain lysates.
General notes	This product is a recombinant monoclonal antibody, which offers several advantages including: <ul style="list-style-type: none"> <li>- High batch-to-batch consistency and reproducibility</li> <li>- Improved sensitivity and specificity</li> <li>- Long-term security of supply</li> <li>- Animal-free production</li> </ul> For more information <a href="#">see here</a> . Our RabMAb <sup>®</sup> technology is a patented hybridoma-based technology for making rabbit monoclonal antibodies. For details on our patents, please refer to <a href="#">RabMAb<sup>®</sup> patents</a> .

### Properties

Form	Liquid
Storage instructions	Shipped at 4°C. Store at +4°C short term (1-2 weeks). Upon delivery aliquot. Store at -20°C long term. Avoid freeze / thaw cycle.
Storage buffer	pH: 7.20 Preservative: 0.01% Sodium azide Constituents: 9% PBS, 40% Glycerol (glycerin, glycerine), 0.05% BSA, 50% Tissue culture supernatant
Purity	Protein A purified

<b>Clonality</b>	Monoclonal
<b>Clone number</b>	EPR2334(2)
<b>Isotype</b>	IgG

## Applications

**The Abpromise guarantee** Our **Abpromise guarantee** covers the use of ab172965 in the following tested applications. The application notes include recommended starting dilutions; optimal dilutions/concentrations should be determined by the end user.

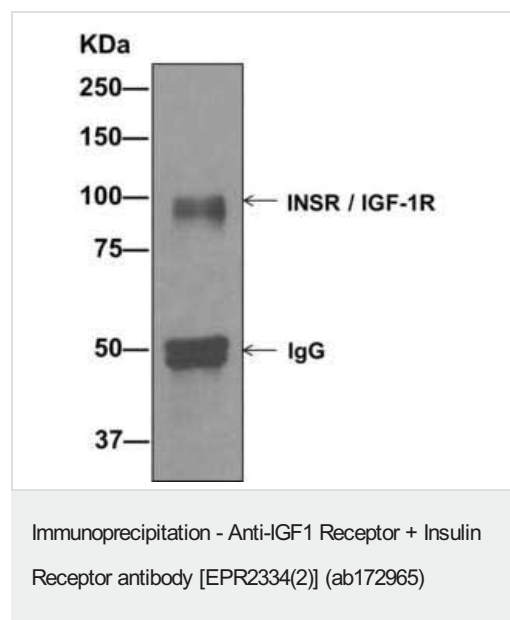
Application	Abreviews	Notes
WB	★★★★★ (1)	1/10000 - 1/50000. Predicted molecular weight: 156 kDa.
IP		1/10 - 1/100.

**Application notes** Is unsuitable for Flow Cyt, ICC/IF or IHC-P.

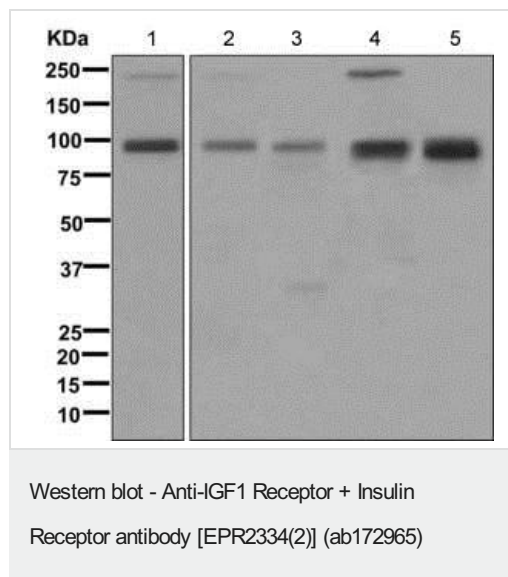
## Target

**Cellular localization** IGF1 Receptor: Cell membrane. Insulin Receptor: Cell membrane.

## Images



Western blot analysis on immunoprecipitation pellet from 293T cell lysate using ab172965.



**All lanes :** Anti-IGF1 Receptor + Insulin Receptor antibody [EPR2334(2)] (ab172965) at 1/10000 dilution

**Lane 1 :** 293T cell lysate

**Lane 2 :** HeLa cell lysate

**Lane 3 :** SK-OV-3 cell lysate

**Lane 4 :** A459 cell lysate

**Lane 5 :** Fetal brain lysate

Lysates/proteins at 10 µg per lane.

**Predicted band size:** 156 kDa

Why choose a recombinant antibody?

**Research with confidence**  
Consistent and reproducible results

**Long-term and scalable supply**  
Recombinant technology

**Success from the first experiment**  
Confirmed specificity

**Ethical standards compliant**  
Animal-free production

Anti-IGF1 Receptor + Insulin Receptor antibody [EPR2334(2)] (ab172965)

**Please note:** All products are "FOR RESEARCH USE ONLY. NOT FOR USE IN DIAGNOSTIC PROCEDURES"

## Our Abpromise to you: Quality guaranteed and expert technical support

- Replacement or refund for products not performing as stated on the datasheet
- Valid for 12 months from date of delivery
- Response to your inquiry within 24 hours
- We provide support in Chinese, English, French, German, Japanese and Spanish

- Extensive multi-media technical resources to help you
- We investigate all quality concerns to ensure our products perform to the highest standards

If the product does not perform as described on this datasheet, we will offer a refund or replacement. For full details of the Abpromise, please visit <https://www.abcam.com/abpromise> or contact our technical team.

#### **Terms and conditions**

---

- Guarantee only valid for products bought direct from Abcam or one of our authorized distributors