


## Product datasheet

### Anti-IGF2BP2/IMP-2 antibody [EPR6740(2)] ab129071

Recombinant RabMAb

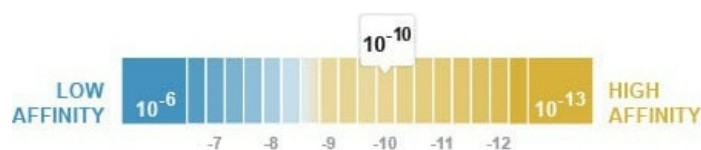
[3 References](#) [4 Images](#)

#### Overview

Product name	Anti-IGF2BP2/IMP-2 antibody [EPR6740(2)]
Description	Rabbit monoclonal [EPR6740(2)] to IGF2BP2/IMP-2
Host species	Rabbit
Tested applications	<b>Suitable for:</b> WB, IHC-P <b>Unsuitable for:</b> Flow Cyt, ICC/IF or IP
Species reactivity	<b>Reacts with:</b> Human <b>Predicted to work with:</b> Mouse, Rat 
Immunogen	Synthetic peptide within Human IGF2BP2/IMP-2 aa 100-200. The exact sequence is proprietary.
Positive control	293T and Caco 2 cell lysates; Human colon tissue.
General notes	This product is a recombinant monoclonal antibody, which offers several advantages including: <ul style="list-style-type: none"> <li>- High batch-to-batch consistency and reproducibility</li> <li>- Improved sensitivity and specificity</li> <li>- Long-term security of supply</li> <li>- Animal-free production</li> </ul> For more information <a href="#">see here</a> . Our RabMAb <sup>®</sup> technology is a patented hybridoma-based technology for making rabbit monoclonal antibodies. For details on our patents, please refer to <a href="#">RabMAb<sup>®</sup> patents</a> .

#### Properties

Form	Liquid
Storage instructions	Shipped at 4°C. Store at -20°C. Stable for 12 months at -20°C.
Dissociation constant (K <sub>D</sub> )	K <sub>D</sub> = 1.00 x 10 <sup>-10</sup> M



[Learn more about K<sub>D</sub>](#)

Storage buffer	pH: 7.20
----------------	----------

	Preservative: 0.01% Sodium azide Constituents: 9% PBS, 40% Glycerol (glycerin, glycerine), 0.05% BSA, 50% Tissue culture supernatant
<b>Purity</b>	Protein A purified
<b>Clonality</b>	Monoclonal
<b>Clone number</b>	EPR6740(2)
<b>Isotype</b>	IgG

## Applications

**The Abpromise guarantee** Our **Abpromise guarantee** covers the use of ab129071 in the following tested applications. The application notes include recommended starting dilutions; optimal dilutions/concentrations should be determined by the end user.

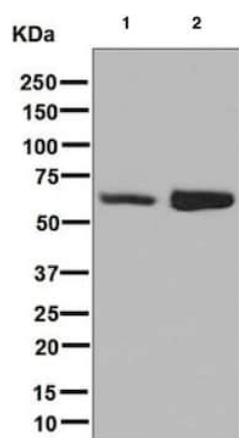
Application	Abreviews	Notes
<b>WB</b>		1/1000 - 1/10000. Detects a band of approximately 65 kDa (predicted molecular weight: 66 kDa).
<b>IHC-P</b>		1/50 - 1/100. Perform heat mediated antigen retrieval before commencing with IHC staining protocol.

**Application notes** Is unsuitable for Flow Cyt, ICC/IF or IP.

## Target

<b>Function</b>	Binds to the 5'-UTR of the insulin-like growth factor 2 (IGF2) mRNAs. Binding is isoform-specific. May regulate translation of target mRNAs.
<b>Tissue specificity</b>	Expressed in oocytes, granulosa cells of small and growing follicles, Leydig cells, spermatogonia and semen (at protein level). Expressed in testicular cancer (at protein level). Expressed weakly in heart, placenta, skeletal muscle, bone marrow, colon, kidney, salivary glands, testis and pancreas. Detected in fetal liver, fetal ovary, gonocytes and interstitial cells of the testis.
<b>Sequence similarities</b>	Belongs to the RRM IMP/VICKZ family. Contains 4 KH domains. Contains 2 RRM (RNA recognition motif) domains.
<b>Domain</b>	The third and fourth KH domains are important for binding to the untranslated region (UTR) of target mRNA.
<b>Cellular localization</b>	Cytoplasm. Localized in cytoplasmic mRNP granules containing untranslated mRNAs. Localizes at the connecting piece and the tail of the spermatozoa.

## Images



Western blot - Anti-IGF2BP2/IMP-2 antibody  
[EPR6740(2)] (ab129071)

**All lanes :** Anti-IGF2BP2/IMP-2 antibody [EPR6740(2)]  
(ab129071) at 1/1000 dilution

**Lane 1 :** 293T (Human embryonic kidney epithelial cell) cell lysate

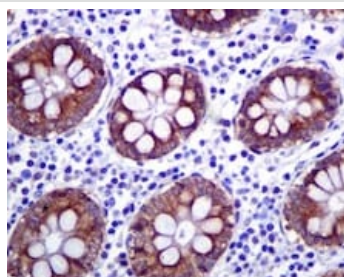
**Lane 2 :** Caco-2 cell lysate

Lysates/proteins at 10 µg per lane.

### Secondary

**All lanes :** Goat anti-Rabbit HRP at 1/2000 dilution

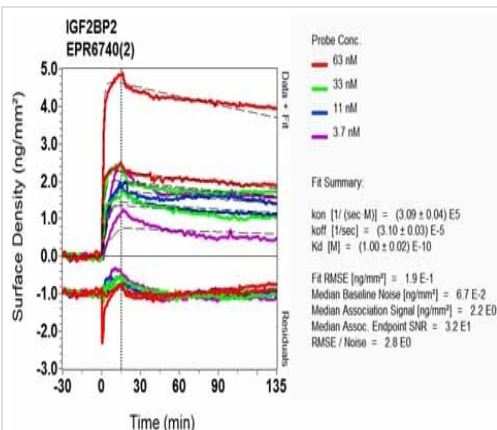
**Predicted band size:** 66 kDa



Immunohistochemistry (Formalin/PFA-fixed paraffin-embedded sections) - Anti-IGF2BP2/IMP-2 antibody  
[EPR6740(2)] (ab129071)

ab129071, at 1/50 dilution, staining IGF2BP2/IMP-2 in paraffin-embedded Human colon tissue by Immunohistochemistry

Perform heat mediated antigen retrieval before commencing with IHC staining protocol.



OIR-D Scanning - Anti-IGF2BP2/IMP-2 antibody  
[EPR6740(2)] (ab129071)

Equilibrium dissociation constant ( $K_D$ )

Learn more about  $K_D$

[Click here to learn more about  \$K\_D\$](#)

### Why choose a recombinant antibody?



**Research with confidence**  
Consistent and reproducible results



**Long-term and scalable supply**  
Recombinant technology



**Success from the first experiment**  
Confirmed specificity



**Ethical standards compliant**  
Animal-free production

Anti-IGF2BP2/IMP-2 antibody [EPR6740(2)]  
(ab129071)

**Please note:** All products are "FOR RESEARCH USE ONLY. NOT FOR USE IN DIAGNOSTIC PROCEDURES"

### Our Abpromise to you: Quality guaranteed and expert technical support

---

- Replacement or refund for products not performing as stated on the datasheet
- Valid for 12 months from date of delivery
- Response to your inquiry within 24 hours
- We provide support in Chinese, English, French, German, Japanese and Spanish
- Extensive multi-media technical resources to help you
- We investigate all quality concerns to ensure our products perform to the highest standards

If the product does not perform as described on this datasheet, we will offer a refund or replacement. For full details of the Abpromise, please visit <https://www.abcam.com/abpromise> or contact our technical team.

### Terms and conditions

---

- Guarantee only valid for products bought direct from Abcam or one of our authorized distributors