

Product datasheet

Anti-IGF2BP2/IMP-2 antibody [EPR6741(B)] ab124930

Recombinant RabMAb

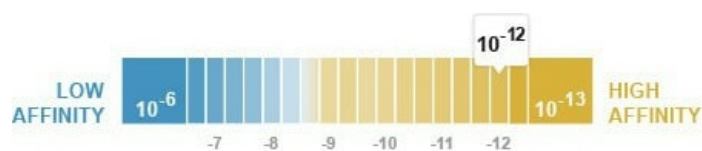
★★★★☆ [1 Abreviews](#) [13 References](#) [8 Images](#)

Overview

| | |
|----------------------------|--|
| Product name | Anti-IGF2BP2/IMP-2 antibody [EPR6741(B)] |
| Description | Rabbit monoclonal [EPR6741(B)] to IGF2BP2/IMP-2 |
| Host species | Rabbit |
| Tested applications | Suitable for: WB, IHC-P, ICC/IF |
| Species reactivity | Reacts with: Mouse, Rat, Human |
| Immunogen | Synthetic peptide corresponding to Human IGF2BP2/IMP-2. |
| Positive control | 293T, Caco2, HepG2, HeLa and SH SY5Y cell lysates, rat brain and mouse heart lysate; Human colon and human lung carcinoma tissue. |
| General notes | <p>The mouse and rat recommendation is based on the WB results. This antibody may not be suitable for IHC with mouse or rat samples.</p> <p>This product is a recombinant monoclonal antibody, which offers several advantages including:</p> <ul style="list-style-type: none"> - High batch-to-batch consistency and reproducibility - Improved sensitivity and specificity - Long-term security of supply - Animal-free production <p>For more information see here.</p> <p>Our RabMAb[®] technology is a patented hybridoma-based technology for making rabbit monoclonal antibodies. For details on our patents, please refer to RabMAb[®] patents.</p> |

Properties

| | |
|--|--|
| Form | Liquid |
| Storage instructions | Shipped at 4°C. Store at +4°C short term (1-2 weeks). Upon delivery aliquot. Store at -20°C long term. Avoid freeze / thaw cycle. Stable for 12 months at -20°C. |
| Dissociation constant (K_D) | K _D = 4.00 x 10 ⁻¹² M |



[Learn more about K_D](#)

| | |
|-----------------------|---|
| Storage buffer | pH: 7.2 Preservative: 0.01% Sodium azide Constituents: 40% Glycerol (glycerin, glycerine), 0.05% BSA, 59% PBS |
| Purity | Protein A purified |
| Clonality | Monoclonal |
| Clone number | EPR6741(B) |
| Isotype | IgG |

Applications

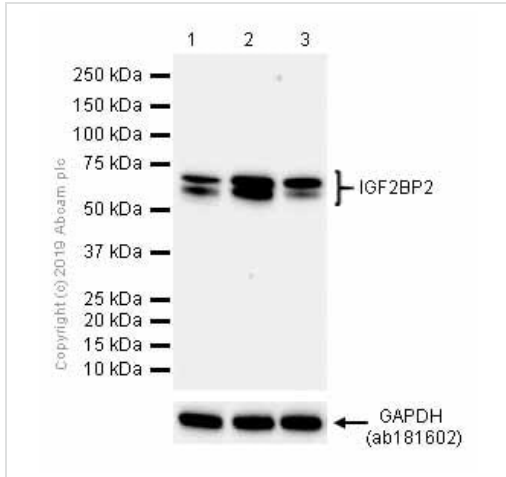
The Abpromise guarantee Our **Abpromise guarantee** covers the use of ab124930 in the following tested applications. The application notes include recommended starting dilutions; optimal dilutions/concentrations should be determined by the end user.

| Application | Abreviews | Notes |
|---------------|-----------|---|
| WB | | 1/2000 - 1/5000. Detects a band of approximately 55-65 kDa (predicted molecular weight: 66 kDa). |
| IHC-P | ★★★★★ (1) | 1/200. Perform heat mediated antigen retrieval with citrate buffer pH 6 before commencing with IHC staining protocol. See <u>IHC antigen retrieval protocols</u> . |
| ICC/IF | | 1/100 - 1/250. |

Target

| | |
|------------------------------|--|
| Function | Binds to the 5'-UTR of the insulin-like growth factor 2 (IGF2) mRNAs. Binding is isoform-specific. May regulate translation of target mRNAs. |
| Tissue specificity | Expressed in oocytes, granulosa cells of small and growing follicles, Leydig cells, spermatogonia and semen (at protein level). Expressed in testicular cancer (at protein level). Expressed weakly in heart, placenta, skeletal muscle, bone marrow, colon, kidney, salivary glands, testis and pancreas. Detected in fetal liver, fetal ovary, gonocytes and interstitial cells of the testis. |
| Sequence similarities | Belongs to the RRM IMP/VICKZ family. Contains 4 KH domains. Contains 2 RRM (RNA recognition motif) domains. |
| Domain | The third and fourth KH domains are important for binding to the untranslated region (UTR) of target mRNA. |
| Cellular localization | Cytoplasm. Localized in cytoplasmic mRNP granules containing untranslated mRNAs. Localizes at the connecting piece and the tail of the spermatozoa. |

Images



Western blot - Anti-IGF2BP2/IMP-2 antibody
[EPR6741(B)] (ab124930)

All lanes : Anti-IGF2BP2/IMP-2 antibody [EPR6741(B)]
(ab124930) at 1/5000 dilution

Lane 1 : 293T (Human embryonic kidney epithelial cell) whole cell lysates

Lane 2 : HeLa (Human cervix adenocarcinoma epithelial cell) whole cell lysates

Lane 3 : HepG2 (Human hepatocellular carcinoma epithelial cell) whole cell lysates

Lysates/proteins at 20 µg per lane.

Secondary

All lanes : Goat Anti-Rabbit IgG H&L (HRP) (**ab97051**) at 1/20000 dilution

Predicted band size: 66 kDa

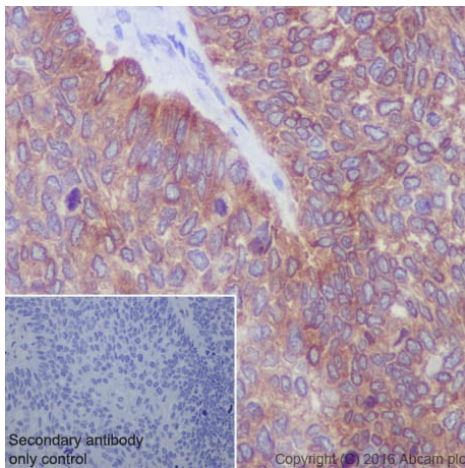
Observed band size: 60,62 kDa

Exposure time: 60 seconds

Blocking buffer and concentration 5% NFDm/TBST

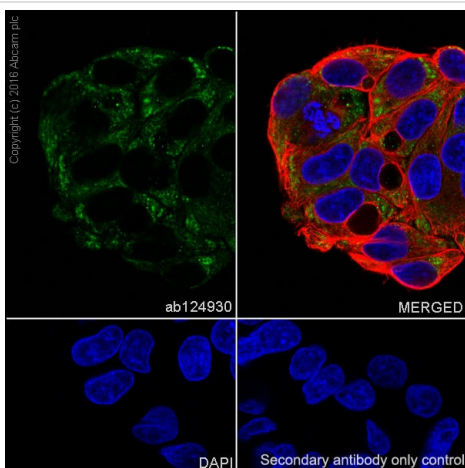
Diluting buffer and concentration 5% NFDm/TBST

The double bands are consistent with what has been described in PMID 23177649.



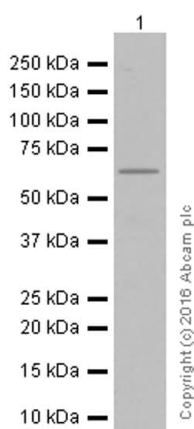
Immunohistochemistry (Formalin/PFA-fixed paraffin-embedded sections) - Anti-IGF2BP2/IMP-2 antibody [EPR6741(B)] (ab124930)

Immunohistochemistry (Formalin/PFA-fixed paraffin-embedded sections) analysis of human lung carcinoma tissue sections labeling IGF2BP2/IMP-2 with purified ab124930 at 1/200 dilution (4.8 µg/ml). Heat mediated antigen retrieval was performed using EDTA Buffer, PH9. Hematoxylin was used to counter stain. ImmunoHistoProbe one step HRP Polymer (ready to use) was used as the secondary antibody at 1/0 dilution. PBS instead of the primary antibody was used as the negative control.



Immunocytochemistry/ Immunofluorescence - Anti-IGF2BP2/IMP-2 antibody [EPR6741(B)] (ab124930)

Immunocytochemistry/ Immunofluorescence analysis of HepG2 (Human liver hepatocellular carcinoma cell line) cells labeling IGF2BP2/IMP-2 with purified ab124930 at 1/250 dilution (3.8µg/ml). Cells were fixed in 4% paraformaldehyde and permeabilized with 0.1% tritonX-100. Cells were counterstained with **ab195889**, an anti-alpha Tubulin antibody [DM1A] - Microtubule Marker (Alexa Fluor® 594) at 1/200 (2.5 µg/ml). **ab150077**, a Goat anti-rabbit IgG (Alexa Fluor® 488) was used as the secondary antibody at 1/1000 dilution. DAPI nuclear counterstain. PBS instead of the primary antibody was used as the secondary antibody only control.



Western blot - Anti-IGF2BP2/IMP-2 antibody [EPR6741(B)] (ab124930)

Anti-IGF2BP2/IMP-2 antibody [EPR6741(B)] (ab124930) at 1/10000 dilution (purified) + Mouse heart lysate at 15 µg

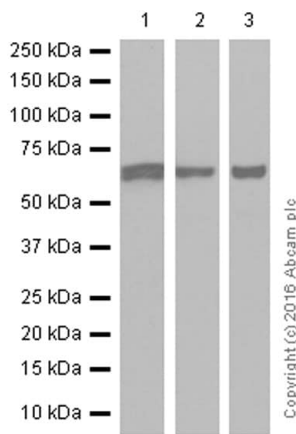
Secondary

Goat Anti-Rabbit IgG H&L (HRP) (**ab97051**) at 1/20000 dilution

Predicted band size: 66 kDa

Observed band size: 66 kDa

Blocking and diluting buffer: 5% NFDM/TBST.



Western blot - Anti-IGF2BP2/IMP-2 antibody [EPR6741(B)] (ab124930)

All lanes : Anti-IGF2BP2/IMP-2 antibody [EPR6741(B)] (ab124930) at 1/2000 dilution (purified)

Lane 1 : 293T (Human embryonic kidney epithelial cell) whole cell lysate

Lane 2 : SH-SY5Y (Human neuroblastoma epithelial cell) whole cell lysate

Lane 3 : Rat brain lysate

Lysates/proteins at 20 µg per lane.

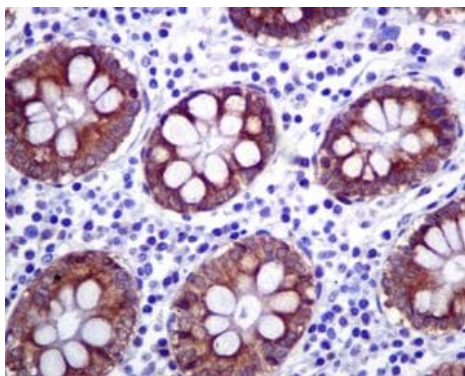
Secondary

All lanes : Goat Anti-Rabbit IgG H&L (HRP) ([ab97051](#)) at 1/20000 dilution

Predicted band size: 66 kDa

Observed band size: 66 kDa

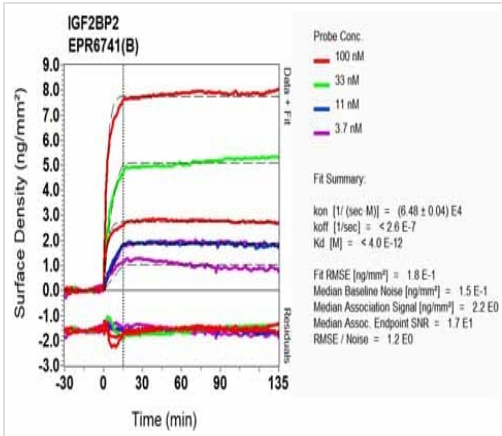
Blocking and diluting buffer: 5% NFDM/TBST.



Immunohistochemistry (Formalin/PFA-fixed paraffin-embedded sections) - Anti-IGF2BP2/IMP-2 antibody [EPR6741(B)] (ab124930)

ab124930 (unpurified), at 1/50 dilution, staining IGF2BP2/IMP-2 in formalin-fixed, paraffin-embedded Human colon tissue by immunohistochemistry.

Perform heat mediated antigen retrieval with citrate buffer pH 6 before commencing with IHC staining protocol.



Equilibrium dissociation constant (K_D)

Learn more about K_D

[Click here to learn more about \$K_D\$](#)

SPR Scanning - Anti-IGF2BP2/IMP-2 antibody
[EPR6741(B)] (ab124930)

Why choose a recombinant antibody?

Research with confidence
Consistent and reproducible results

Long-term and scalable supply
Recombinant technology

Success from the first experiment
Confirmed specificity

Ethical standards compliant
Animal-free production

Anti-IGF2BP2/IMP-2 antibody [EPR6741(B)]
(ab124930)

Please note: All products are "FOR RESEARCH USE ONLY. NOT FOR USE IN DIAGNOSTIC PROCEDURES"

Our Abpromise to you: Quality guaranteed and expert technical support

- Replacement or refund for products not performing as stated on the datasheet
- Valid for 12 months from date of delivery
- Response to your inquiry within 24 hours

- We provide support in Chinese, English, French, German, Japanese and Spanish
- Extensive multi-media technical resources to help you
- We investigate all quality concerns to ensure our products perform to the highest standards

If the product does not perform as described on this datasheet, we will offer a refund or replacement. For full details of the Abpromise, please visit <https://www.abcam.com/abpromise> or contact our technical team.

Terms and conditions

- Guarantee only valid for products bought direct from Abcam or one of our authorized distributors