

Product datasheet

Anti-IgG1 antibody [MIGG-108] ab133468

RabMAb

1 Image

Overview

Product name Anti-IgG1 antibody [MIGG-108]
Description Rabbit monoclonal [MIGG-108] to IgG1

ⓘ This product is a **fast track antibody**. It has been affinity purified and shows high titre values against the immunizing peptide by ELISA.

[Read the terms of use »](#)

Host species Rabbit

Species reactivity **Reacts with:** Mouse, Rat

Immunogen The details of the immunogen for this antibody are not available.

General notes Our RabMAb[®] technology is a patented hybridoma-based technology for making rabbit monoclonal antibodies. For details on our patents, please refer to [RabMAb[®] patents](#).

The Life Science industry has been in the grips of a reproducibility crisis for a number of years. Abcam is leading the way in addressing this with our range of recombinant monoclonal antibodies and knockout edited cell lines for gold-standard validation. Please check that this product meets your needs before purchasing.

If you have any questions, special requirements or concerns, please send us an inquiry and/or contact our Support team ahead of purchase. Recommended alternatives for this product can be found below, along with publications, customer reviews and Q&As

Human: We have preliminary internal testing data to indicate this antibody may not react with this species. Please contact us for more information.

Properties

Form Liquid

Storage instructions Shipped at 4°C. Store at +4°C short term (1-2 weeks). Store at -20°C or -80°C. Avoid freeze / thaw cycle.

Storage buffer pH: 7.2
Preservative: 0.01% Sodium azide
Constituents: 50% Glycerol (glycerin, glycerine), 0.05% BSA

Purity	Protein A purified
Clonality	Monoclonal
Clone number	MIGG-108
Isotype	IgG

Applications

Fast track antibodies constitute a diverse group of products that have been released to accelerate your research, but are not yet fully characterized. They have all been affinity purified and show high titre values against the immunizing peptide (by ELISA).

Fast track terms of use

Application	Abreviews	Notes
ELISA		1/1000 - 1/10000.

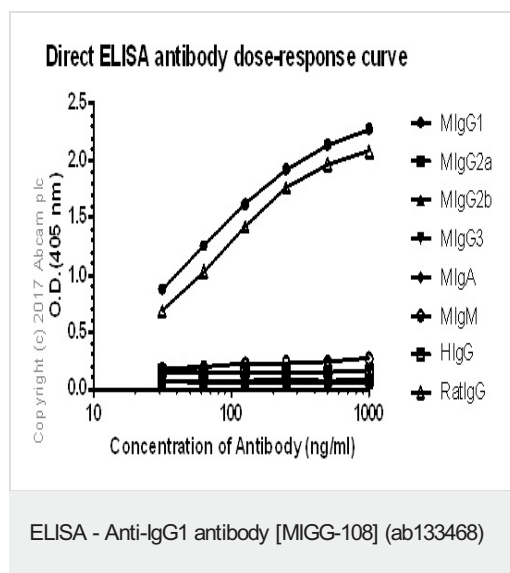
Target

Relevance There are four IgG subclasses (IgG1, 2, 3 and 4) in humans, named in order of their abundance in serum (IgG1 being the most abundant).

Cellular localization Secreted. Cell membrane; Single-pass membrane protein

Images

This Fast-Track antibody is not yet fully characterised. These images represent **inconclusive preliminary data**.



Direct ELISA antibody dose-response curve using ab133468 between 0-1000 ng/ml. Antigen concentration of 1000 ng/mL. An alkaline phosphatase-conjugated goat anti-rabbit IgG (H+L) (1/2500) was used as the secondary antibody.

Please note: All products are "FOR RESEARCH USE ONLY. NOT FOR USE IN DIAGNOSTIC PROCEDURES"

Terms and conditions

- Guarantee only valid for products bought direct from Abcam or one of our authorized distributors