



Product datasheet

Anti-IGJ antibody [KT109] ab169854

[2 Images](#)

Overview

Product name	Anti-IGJ antibody [KT109]
Description	Mouse monoclonal [KT109] to IGJ
Host species	Mouse
Tested applications	Suitable for: WB
Species reactivity	Reacts with: Human
Immunogen	<p>Recombinant full length protein corresponding to Human IGJ aa 1-159.</p> <p>Sequence:</p> <p>MKNHLLFWGVLAVFIKAVHVKAQEDERMLVDNKCKCARI TSRIIRSSSED PNEDIVERNIRIVPLNNRENISDPTSPLRTRFVYHLSDLCKK CDPTEVE LDNQMTATQSNICDEDSATETCYTYDRNKCYTAVVPLVYG GETKMOVETA LTPDACYPD</p> <p>Database link: P01591</p> <p> Run BLAST with  Run BLAST with</p>
Positive control	Purified serum IgA; Human saliva
General notes	<p>The Life Science industry has been in the grips of a reproducibility crisis for a number of years. Abcam is leading the way in addressing this with our range of recombinant monoclonal antibodies and knockout edited cell lines for gold-standard validation. Please check that this product meets your needs before purchasing.</p> <p>If you have any questions, special requirements or concerns, please send us an inquiry and/or contact our Support team ahead of purchase. Recommended alternatives for this product can be found below, along with publications, customer reviews and Q&As</p>

Properties

Form	Liquid
Storage instructions	Shipped at 4°C. Store at +4°C short term (1-2 weeks). Upon delivery aliquot. Store at -20°C long term. Avoid freeze / thaw cycle.
Storage buffer	<p>Preservative: 0.1% Sodium azide</p> <p>Constituent: 99.9% PBS</p>

Purity	Protein A purified
Clonality	Monoclonal
Clone number	KT109
Isotype	IgG2b

Applications

The Abpromise guarantee Our **Abpromise guarantee** covers the use of ab169854 in the following tested applications. The application notes include recommended starting dilutions; optimal dilutions/concentrations should be determined by the end user.

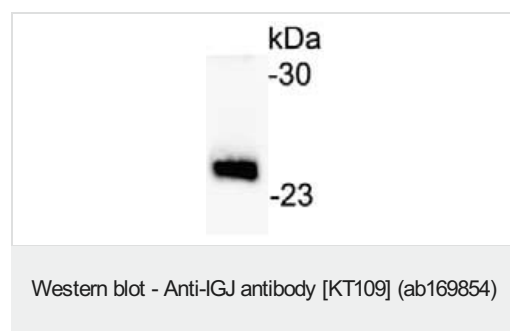
Application	Abreviews	Notes
WB		Use a concentration of 1 µg/ml. Predicted molecular weight: 18 kDa.

Target

Function Serves to link two monomer units of either IgM or IgA. In the case of IgM, the J chain-jointed dimer is a nucleating unit for the IgM pentamer, and in the case of IgA it induces larger polymers. It also help to bind these immunoglobulins to secretory component.

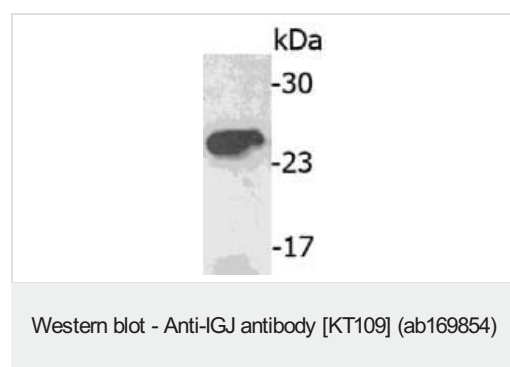
Cellular localization Secreted.

Images



Anti-IgJ antibody [KT109] (ab169854) at 1 µg/ml + Purified serum IgA.

Predicted band size: 18 kDa



Anti-IgJ antibody [KT109] (ab169854) at 1 µg/ml + Human saliva

Predicted band size: 18 kDa

Please note: All products are "FOR RESEARCH USE ONLY. NOT FOR USE IN DIAGNOSTIC PROCEDURES"

Our Abpromise to you: Quality guaranteed and expert technical support

- Replacement or refund for products not performing as stated on the datasheet
- Valid for 12 months from date of delivery
- Response to your inquiry within 24 hours

- We provide support in Chinese, English, French, German, Japanese and Spanish
- Extensive multi-media technical resources to help you
- We investigate all quality concerns to ensure our products perform to the highest standards

If the product does not perform as described on this datasheet, we will offer a refund or replacement. For full details of the Abpromise, please visit <https://www.abcam.com/abpromise> or contact our technical team.

Terms and conditions

- Guarantee only valid for products bought direct from Abcam or one of our authorized distributors