




Product datasheet

Anti-IKIP antibody ab221171

2 Images

Overview

Product name	Anti-IKIP antibody
Description	Rabbit polyclonal to IKIP
Host species	Rabbit
Tested applications	Suitable for: WB, ICC/IF
Species reactivity	Reacts with: Human Predicted to work with: Mouse, Rat 
Immunogen	Recombinant fragment corresponding to Human IKIP aa 250 to the C-terminus. Database link: Q70UQ0-4  Run BLAST with  Run BLAST with
Positive control	ICC/IF: BJ cells. WB: RT-4 cell lysate.
General notes	<p>The Life Science industry has been in the grips of a reproducibility crisis for a number of years. Abcam is leading the way in addressing this with our range of recombinant monoclonal antibodies and knockout edited cell lines for gold-standard validation. Please check that this product meets your needs before purchasing.</p> <p>If you have any questions, special requirements or concerns, please send us an inquiry and/or contact our Support team ahead of purchase. Recommended alternatives for this product can be found below, along with publications, customer reviews and Q&As</p>

Properties

Form	Liquid
Storage instructions	Shipped at 4°C. Store at +4°C short term (1-2 weeks). Upon delivery aliquot. Store at -20°C long term. Avoid freeze / thaw cycle.
Storage buffer	pH: 7.20 Preservative: 0.02% Sodium azide Constituents: PBS, 40% Glycerol (glycerin, glycerine)
Purity	Immunogen affinity purified
Clonality	Polyclonal
Isotype	IgG

Applications

The Abpromise guarantee

Our **Abpromise guarantee** covers the use of ab221171 in the following tested applications.

The application notes include recommended starting dilutions; optimal dilutions/concentrations should be determined by the end user.

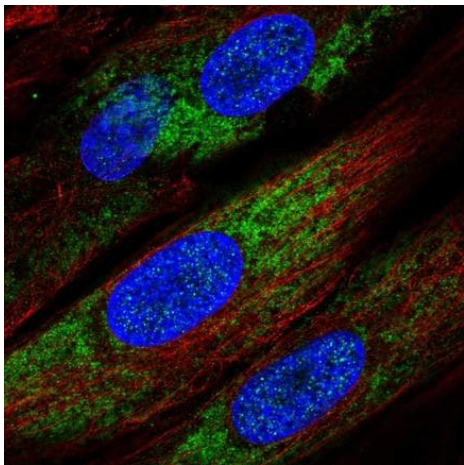
Application	Abreviews	Notes
WB		Use a concentration of 0.04 - 0.4 µg/ml. Detects a band of approximately 43 kDa (predicted molecular weight: 39 kDa).
ICC/IF		Use a concentration of 0.25 - 2 µg/ml. Fixation/Permeabilization: PFA/Triton X-100.

Target

Relevance

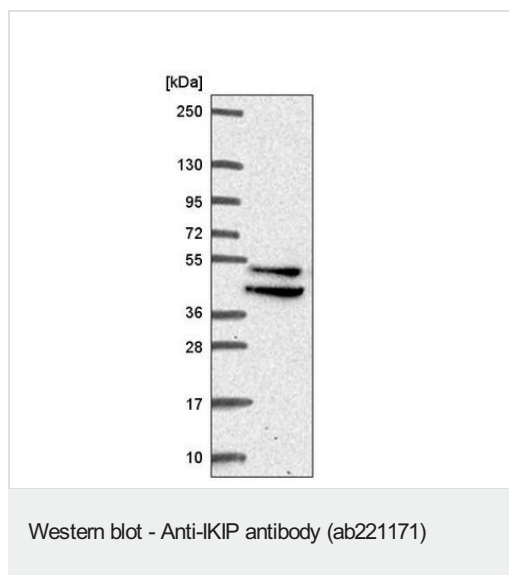
IKIP (I kappa B kinase interacting protein) is located on chromosome 12 in close proximity to APAF1 (apoptotic protease-activating factor-1). IKIP was originally cloned from a yeast two hybrid screening as an IKK2 interacting protein. IKIP and APAF1 share a common 488 bp promoter from which the two genes are transcribed in opposite directions, presumably in a co-regulated manner. Three IKIP transcripts are generated by differential splicing and alternative exon usage and show no significant homology to other genes. IKIP is expressed predominantly in the lung, kidney, spleen, thymus and skeletal muscle. Like APAF1, expression of IKIP is enhanced by γ -irradiation, in a p53-dependent manner. When transfected into endothelial cells IKIP promotes apoptosis suggesting that it plays a role in the cell death process as well as NF- κ B regulation.

Images



Immunofluorescent analysis of PFA fixed, triton X-100 permeabilized BJ cells labeling IKIP using ab221171 at 4 µg/mL (green).

Immunocytochemistry/ Immunofluorescence - Anti-
IKIP antibody (ab221171)



Anti-IKIP antibody (ab221171) at 1/500 dilution + RT-4 cell lysate

Predicted band size: 39 kDa

Please note: All products are "FOR RESEARCH USE ONLY. NOT FOR USE IN DIAGNOSTIC PROCEDURES"

Our Abpromise to you: Quality guaranteed and expert technical support

- Replacement or refund for products not performing as stated on the datasheet
- Valid for 12 months from date of delivery
- Response to your inquiry within 24 hours
- We provide support in Chinese, English, French, German, Japanese and Spanish
- Extensive multi-media technical resources to help you
- We investigate all quality concerns to ensure our products perform to the highest standards

If the product does not perform as described on this datasheet, we will offer a refund or replacement. For full details of the Abpromise, please visit <https://www.abcam.com/abpromise> or contact our technical team.

Terms and conditions

- Guarantee only valid for products bought direct from Abcam or one of our authorized distributors