

Product datasheet

Anti-IKK alpha antibody [Y463] ab32041

KO VALIDATED

Recombinant

RabMAb

★★★★☆ 6 Abreviews 67 References 9 Images

Overview

Product name	Anti-IKK alpha antibody [Y463]
Description	Rabbit monoclonal [Y463] to IKK alpha
Host species	Rabbit
Specificity	The rat recommendation is based on the WB results. We do not guarantee IHC-P for rat.
Tested applications	Suitable for: Flow Cyt (Intra), WB, IHC-P, IP
Species reactivity	Reacts with: Mouse, Rat, Human
Immunogen	Synthetic peptide. This information is proprietary to Abcam and/or its suppliers.
Positive control	WB: HAP1-WT; Daudi, RAW 264.7 and C6 whole cell lysate. Mouse and rat kidney lysate. Flow Cyt (intra): HAP1-WT and Daudi cells; IP: HeLa cell lysate; IHC-P: Human ovarian cancer and mouse kidney tissue.
General notes	<p>This product is a recombinant monoclonal antibody, which offers several advantages including:</p> <ul style="list-style-type: none"> - High batch-to-batch consistency and reproducibility - Improved sensitivity and specificity - Long-term security of supply - Animal-free production <p>For more information see here.</p> <p>Our RabMAb[®] technology is a patented hybridoma-based technology for making rabbit monoclonal antibodies. For details on our patents, please refer to RabMAb[®] patents.</p>

Properties

Form	Liquid
Storage instructions	Shipped at 4°C. Store at +4°C short term (1-2 weeks). Upon delivery aliquot. Store at -20°C long term. Avoid freeze / thaw cycle.
Storage buffer	<p>pH: 7.20</p> <p>Preservative: 0.01% Sodium azide</p> <p>Constituents: 59% PBS, 40% Glycerol (glycerin, glycerine), 0.05% BSA</p>
Purity	Protein A purified
Clonality	Monoclonal

Clone number	Y463
Isotype	IgG

Applications

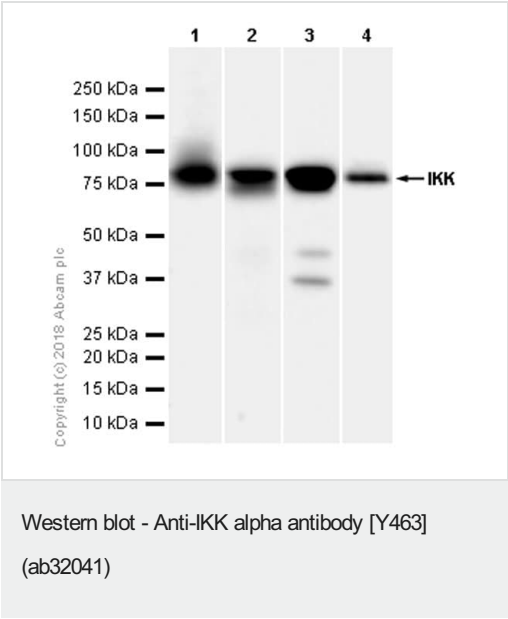
The Abpromise guarantee Our **Abpromise guarantee** covers the use of ab32041 in the following tested applications. The application notes include recommended starting dilutions; optimal dilutions/concentrations should be determined by the end user.

Application	Abreviews	Notes
Flow Cyt (Intra)		1/20. For unpurified use at 1/50. ab172730 - Rabbit monoclonal IgG, is suitable for use as an isotype control with this antibody.
WB	★★★★★ (4)	1/1000. Detects a band of approximately 88 kDa (predicted molecular weight: 85 kDa). For unpurified use at 1/10000 - 1/50000.
IHC-P		1/50. Perform heat mediated antigen retrieval with citrate buffer pH 6 before commencing with IHC staining protocol. See IHC antigen retrieval protocols . The rat recommendation is based on the WB results. We do not guarantee IHC-P for rat.
IP	★★★★★ (1)	1/60.

Target

Function	Acts as part of the IKK complex in the conventional pathway of NF-kappa-B activation and phosphorylates inhibitors of NF-kappa-B thus leading to the dissociation of the inhibitor/NF-kappa-B complex and ultimately the degradation of the inhibitor. As part of the non-canonical pathway of NF-kappa-B activation, the MAP3K14-activated CHUK/IKKA homodimer phosphorylates NFkB2/p100 associated with RelB, inducing its proteolytic processing to NFkB2/p52 and the formation of NF-kappa-B RelB-p52 complexes. Also phosphorylates NCOA3. Phosphorylates 'Ser-10' of histone H3 at NF-kappa-B-regulated promoters during inflammatory responses triggered by cytokines.
Tissue specificity	Widely expressed.
Involvement in disease	Defects in CHUK are the cause of cocoon syndrome (COCOS) [MIM:613630]; also known as fetal encasement syndrome. COCOS is a lethal syndrome characterized by multiple fetal malformations including defective face and seemingly absent limbs, which are bound to the trunk and encased under the skin.
Sequence similarities	Belongs to the protein kinase superfamily. Ser/Thr protein kinase family. I-kappa-B kinase subfamily. Contains 1 protein kinase domain.
Post-translational modifications	Phosphorylated by MAP3K14/NIK, AKT and to a lesser extent by MEKK1, and dephosphorylated by PP2A. Autophosphorylated. Acetylation of Thr-179 by Yersinia yopJ prevents phosphorylation and activation, thus blocking the I-kappa-B signaling pathway.

Images



All lanes : Anti-IKK alpha antibody [Y463] (ab32041) at 1/1000 dilution (Purified)

Lane 1 : RAW 264.7 (Mouse Abelson murine leukemia virus-induced tumor macrophage) whole cell lysate

Lane 2 : Mouse kidney lysate

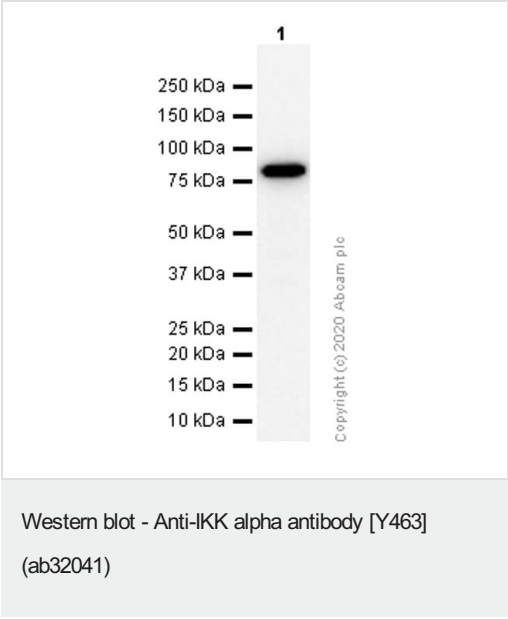
Lane 3 : C6 (Rat glial tumor glial cell) whole cell lysate

Lane 4 : Rat kidney lysate

Secondary

All lanes : Goat Anti-Rabbit IgG H&L (HRP) ([ab97051](#)) at 1/20000 dilution

Predicted band size: 85 kDa

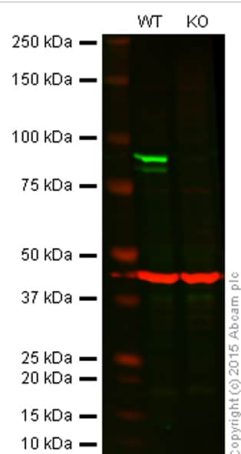


Anti-IKK alpha antibody [Y463] (ab32041) at 1/10000 dilution + Daudi (Human Burkitt's lymphoma lymphoblast) whole cell lysate

Secondary

Goat Anti-Rabbit IgG, (H+L), Peroxidase conjugated at 1/20000 dilution

Predicted band size: 85 kDa



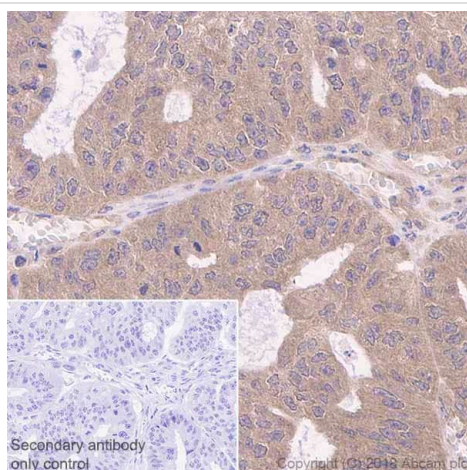
Western blot - Anti-IKK alpha antibody [Y463] (ab32041)

Lane 1: Wild-type HAP1 cell lysate (20 µg)

Lane 2: IKK alpha knockout HAP1 cell lysate (20 µg)

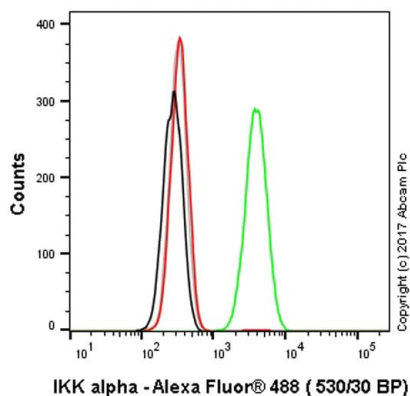
Lanes 1 and 2: Merged signal (red and green). Green - ab32041 observed at 84 kDa. Red - loading control, **ab8226**, observed at 42 kDa.

ab32041 (Unpurified format) was shown to specifically react with IKK alpha when IKK alpha knockout samples were used. Wild-type and IKK alpha knockout samples were subjected to SDS-PAGE. ab32041 and **ab8226** (loading control to beta actin) were diluted 1/10000 and 1/1000 respectively and incubated overnight at 4°C. Blots were developed with Goat anti-Rabbit IgG H&L (IRDye® 800CW) preadsorbed (**ab216773**) and Goat anti-Mouse IgG H&L (IRDye® 680RD) preadsorbed (**ab216776**) secondary antibodies at 1/10000 dilution for 1 hour at room temperature before imaging.



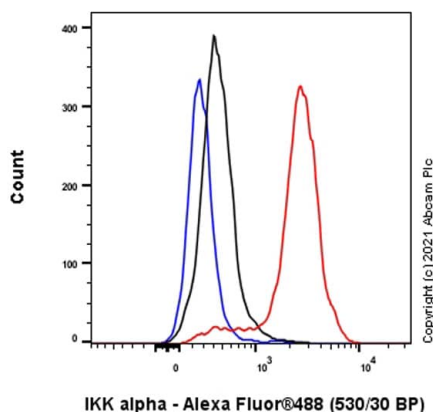
Immunohistochemistry (Formalin/PFA-fixed paraffin-embedded sections) - Anti-IKK alpha antibody [Y463] (ab32041)

Immunohistochemistry (Formalin/PFA-fixed paraffin-embedded sections) analysis of human ovarian cancer tissue sections labeling IKK alpha with purified ab32041 at 1/50 dilution (3.92 µg/mL). Heat mediated antigen retrieval was performed using Perform heat mediated antigen retrieval using **ab93684** (Tris/EDTA buffer, pH 9.0). Tissue was counterstained with Hematoxylin. Rabbit specific IHC polymer detection kit HRP/DAB (**ab209101**) secondary antibody was used at 1/0 dilution. PBS instead of the primary antibody was used as the negative control.



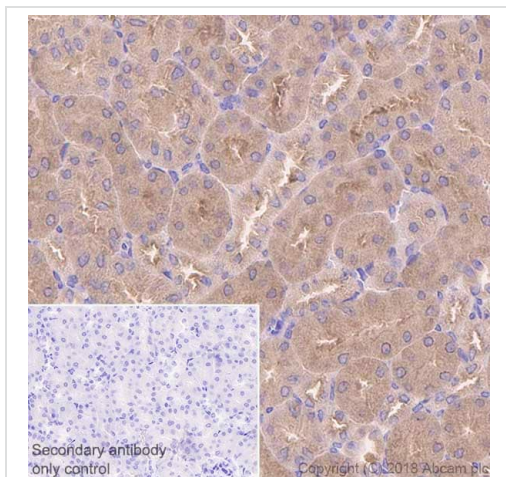
Flow Cytometry (Intracellular) - Anti-IKK alpha antibody [Y463] (ab32041)

Overlay histogram showing HAP1 wildtype (green line) and HAP1-CHUK knockout cells (red line) stained with ab32041. The cells were fixed with 4% formaldehyde (10 min) and then permeabilized with 0.1% PBS-Triton X-100 for 15 min. The cells were then incubated in 1x PBS / 10% normal goat serum to block non-specific protein-protein interactions followed by the antibody (ab32041, 1 µg/ml) for 30 min at 22°C. The secondary antibody used was Alexa Fluor® 488 goat anti-rabbit IgG (H&L) presorbed ([ab150081](#)) at 1/2000 dilution for 30 min at 22°C. A rabbit IgG isotype control antibody ([ab172730](#)) was used at the same concentration and conditions as the primary antibody (HAP1 wildtype - black line, HAP1-CHUK knockout - grey line). Unlabelled sample was also used as a control (this line is not shown for the purpose of simplicity). Acquisition of >5,000 events were collected using a 50 mW Blue laser (488nm) and 530/30 bandpass filter. This antibody can also be used in HAP1 cells fixed with 80% methanol (5 min), permeabilized with 0.1% PBS-Triton X-100 for 15 min under the same conditions.



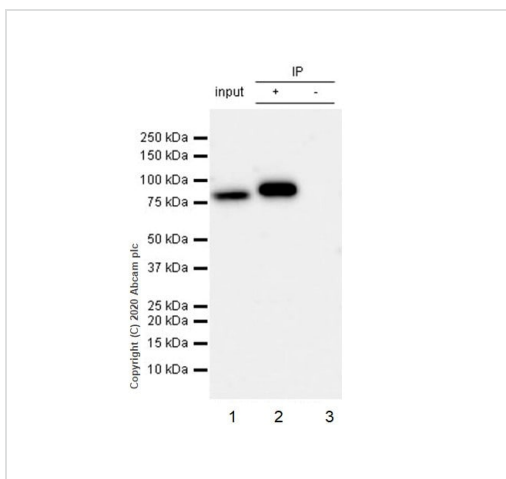
Flow Cytometry (Intracellular) - Anti-IKK alpha antibody [Y463] (ab32041)

Intracellular Flow Cytometry analysis of Daudi (Human Burkitt's lymphoma lymphoblast) cells labelling IKK alpha with purified ab32041 at 1/20 dilution (10 µg/mL) (Red). Cells were fixed with 4% Paraformaldehyde and permeabilised with 90% Methanol. A Goat anti rabbit IgG (Alexa Fluor® 488, [ab150077](#)) secondary antibody was used at 1/2000. Isotype control - Rabbit monoclonal IgG (Black). Unlabelled control - Cell without incubation with primary antibody and secondary antibody (Blue).



Immunohistochemistry (Formalin/PFA-fixed paraffin-embedded sections) - Anti-IKK alpha antibody [Y463] (ab32041)

Immunohistochemistry (Formalin/PFA-fixed paraffin-embedded sections) analysis of mouse kidney tissue sections labeling IKK alpha with purified ab32041 at 1/50 dilution (3.92 µg/mL). Heat mediated antigen retrieval was performed using Perform heat mediated antigen retrieval using [ab93684](#) (Tris/EDTA buffer, pH 9.0). Tissue was counterstained with Hematoxylin. Rabbit specific IHC polymer detection kit HRP/DAB ([ab209101](#)) secondary antibody was used at 1/0 dilution. PBS instead of the primary antibody was used as the negative control.



Immunoprecipitation - Anti-IKK alpha antibody [Y463] (ab32041)

Purified ab32041 at 1/60 dilution (2µg) immunoprecipitating IKK alpha in HeLa whole cell lysate.
 Lane 1 (input): HeLa (Human cervix adenocarcinoma epithelial cell) whole cell lysate 10µg
 Lane 2 (+): ab32041 + HeLa whole cell lysate.
 Lane 3 (-): Rabbit monoclonal IgG ([ab172730](#)) instead of [ab169743](#) in HeLa whole cell lysate.
 VeriBlot for IP Detection Reagent (HRP) ([ab131366](#)) (1/1000 dilution) was used for Western blotting.
 Blocking Buffer and concentration: 5% NFDm/TBST.
 Diluting buffer and concentration: 5% NFDm/TBST.
 Observed band size: 88 kDa

Why choose a recombinant antibody?



Research with confidence
Consistent and reproducible results



Long-term and scalable supply
Recombinant technology



Success from the first experiment
Confirmed specificity



Ethical standards compliant
Animal-free production

Anti-IKK alpha antibody [Y463] (ab32041)

Please note: All products are "FOR RESEARCH USE ONLY. NOT FOR USE IN DIAGNOSTIC PROCEDURES"

Our Abpromise to you: Quality guaranteed and expert technical support

- Replacement or refund for products not performing as stated on the datasheet
- Valid for 12 months from date of delivery
- Response to your inquiry within 24 hours
- We provide support in Chinese, English, French, German, Japanese and Spanish
- Extensive multi-media technical resources to help you
- We investigate all quality concerns to ensure our products perform to the highest standards

If the product does not perform as described on this datasheet, we will offer a refund or replacement. For full details of the Abpromise, please visit <https://www.abcam.com/abpromise> or contact our technical team.

Terms and conditions

- Guarantee only valid for products bought direct from Abcam or one of our authorized distributors