

Product datasheet

Anti-IL-10RA antibody ab197666

[2 References](#) [2 Images](#)

Overview

| | |
|----------------------------|---|
| Product name | Anti-IL-10RA antibody |
| Description | Rabbit polyclonal to IL-10RA |
| Host species | Rabbit |
| Tested applications | Suitable for: IHC-P |
| Species reactivity | Reacts with: Human |
| Immunogen | Fusion protein corresponding to Human IL-10RA (internal sequence). (BC028082). Database link: Q13651 |
| Positive control | Human tonsil and lung cancer tissues. |
| General notes | <p>The Life Science industry has been in the grips of a reproducibility crisis for a number of years. Abcam is leading the way in addressing this with our range of recombinant monoclonal antibodies and knockout edited cell lines for gold-standard validation. Please check that this product meets your needs before purchasing.</p> <p>If you have any questions, special requirements or concerns, please send us an inquiry and/or contact our Support team ahead of purchase. Recommended alternatives for this product can be found below, along with publications, customer reviews and Q&As</p> |

Properties

| | |
|-----------------------------|---|
| Form | Liquid |
| Storage instructions | Shipped at 4°C. Store at +4°C short term (1-2 weeks). Upon delivery aliquot. Store at -20°C long term. Avoid freeze / thaw cycle. |
| Storage buffer | pH: 7.4 Preservative: 0.05% Sodium azide Constituents: 50% Glycerol (glycerin, glycerine), 49% PBS |
| Purity | Immunogen affinity purified |
| Clonality | Polyclonal |
| Isotype | IgG |

Applications

The Abpromise guarantee

Our **Abpromise guarantee** covers the use of ab197666 in the following tested applications.

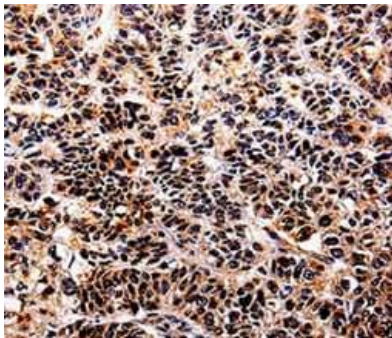
The application notes include recommended starting dilutions; optimal dilutions/concentrations should be determined by the end user.

| Application | Abreviews | Notes |
|-------------|-----------|---------------|
| IHC-P | | 1/25 - 1/100. |

Target

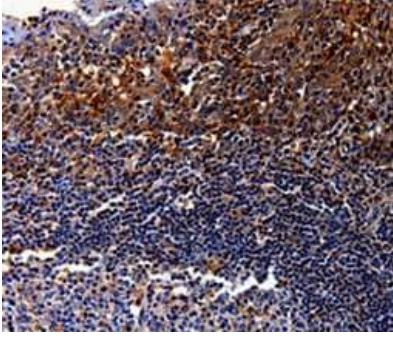
| | |
|-------------------------------|--|
| Function | Receptor for IL10; binds IL10 with a high affinity. |
| Tissue specificity | Spleen, thymus, and PBMC. Weak expression in pancreas, skeletal muscle, brain, heart, and kidney. Placenta, lung, and liver showed intermediate levels. Monocytes, B-cells, large granular lymphocytes, and T-cells express high levels. |
| Involvement in disease | Inflammatory bowel disease 28 |
| Sequence similarities | Belongs to the type II cytokine receptor family. |
| Cellular localization | Membrane. |

Images



Immunohistochemical analysis of paraffin-embedded Human tonsil cancer tissue labeling IL-10RA using ab197666 at 1/30 dilution.

Immunohistochemistry (Formalin/PFA-fixed paraffin-embedded sections) - Anti-IL-10RA antibody (ab197666)



Immunohistochemical analysis of paraffin-embedded Human lung cancer tissue labeling IL-10RA using ab197666 at 1/30 dilution.

Immunohistochemistry (Formalin/PFA-fixed paraffin-embedded sections) - Anti-IL-10RA antibody (ab197666)

Please note: All products are "FOR RESEARCH USE ONLY. NOT FOR USE IN DIAGNOSTIC PROCEDURES"

Our Abpromise to you: Quality guaranteed and expert technical support

- Replacement or refund for products not performing as stated on the datasheet
- Valid for 12 months from date of delivery
- Response to your inquiry within 24 hours
- We provide support in Chinese, English, French, German, Japanese and Spanish
- Extensive multi-media technical resources to help you
- We investigate all quality concerns to ensure our products perform to the highest standards

If the product does not perform as described on this datasheet, we will offer a refund or replacement. For full details of the Abpromise, please visit <https://www.abcam.com/abpromise> or contact our technical team.

Terms and conditions

- Guarantee only valid for products bought direct from Abcam or one of our authorized distributors