




Product datasheet

Anti-IL-10RA antibody ab225820

[5 References](#) [1 Image](#)

Overview

Product name	Anti-IL-10RA antibody
Description	Rabbit polyclonal to IL-10RA
Host species	Rabbit
Tested applications	Suitable for: WB
Species reactivity	Reacts with: Mouse, Human Predicted to work with: Rat 
Immunogen	Recombinant fragment corresponding to Human IL-10RA aa 1-250. Database link: Q13651 <div>  Run BLAST with  Run BLAST with </div>
Positive control	WB: Mouse brain tissue lysate, MCF7 and K562 cell lysate.
General notes	<p>The Life Science industry has been in the grips of a reproducibility crisis for a number of years. Abcam is leading the way in addressing this with our range of recombinant monoclonal antibodies and knockout edited cell lines for gold-standard validation. Please check that this product meets your needs before purchasing.</p> <p>If you have any questions, special requirements or concerns, please send us an inquiry and/or contact our Support team ahead of purchase. Recommended alternatives for this product can be found below, along with publications, customer reviews and Q&As</p>

Properties

Form	Liquid
Storage instructions	Shipped at 4°C. Store at +4°C short term (1-2 weeks). Upon delivery aliquot. Store at -20°C long term. Avoid freeze / thaw cycle.
Storage buffer	pH: 7.30 Preservative: 0.02% Sodium azide Constituents: 50% Glycerol, PBS
Purity	Affinity purified
Clonality	Polyclonal
Isotype	IgG

Applications

The Abpromise guarantee

Our **Abpromise guarantee** covers the use of ab225820 in the following tested applications.

The application notes include recommended starting dilutions; optimal dilutions/concentrations should be determined by the end user.

Application	Abreviews	Notes
WB		1/500 - 1/2000. Detects a band of approximately 72 kDa (predicted molecular weight: 63 kDa).

Target

Function

Receptor for IL10; binds IL10 with a high affinity.

Tissue specificity

Spleen, thymus, and PBMC. Weak expression in pancreas, skeletal muscle, brain, heart, and kidney. Placenta, lung, and liver showed intermediate levels. Monocytes, B-cells, large granular lymphocytes, and T-cells express high levels.

Involvement in disease

Inflammatory bowel disease 28

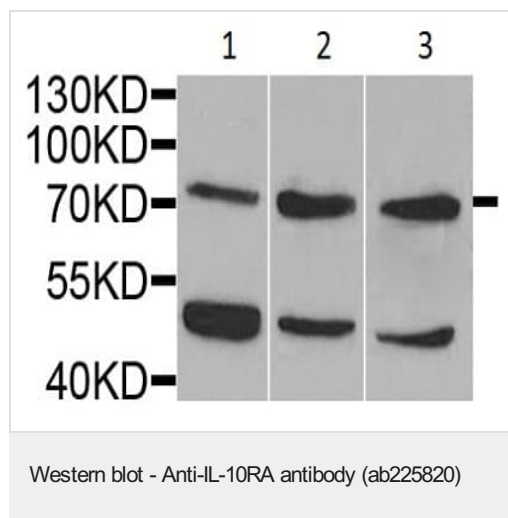
Sequence similarities

Belongs to the type II cytokine receptor family.

Cellular localization

Membrane.

Images



All lanes : Anti-IL-10RA antibody (ab225820) at 1/1000 dilution

Lane 1 : K562 (human chronic myelogenous leukemia cell line from bone marrow) extract

Lane 2 : MCF7 (human breast adenocarcinoma cell line) extract

Lane 3 : Mouse brain extract

Lysates/proteins at 25 µg per lane.

Secondary

All lanes : HRP Goat Anti-Rabbit IgG (H+L) at 1/10000 dilution

Developed using the ECL technique.

Predicted band size: 63 kDa

Blocking buffer: 3% non-fat dry milk in TBST.

Please note: All products are "FOR RESEARCH USE ONLY. NOT FOR USE IN DIAGNOSTIC PROCEDURES"

Our Abpromise to you: Quality guaranteed and expert technical support

- Replacement or refund for products not performing as stated on the datasheet
- Valid for 12 months from date of delivery
- Response to your inquiry within 24 hours

- We provide support in Chinese, English, French, German, Japanese and Spanish
- Extensive multi-media technical resources to help you
- We investigate all quality concerns to ensure our products perform to the highest standards

If the product does not perform as described on this datasheet, we will offer a refund or replacement. For full details of the Abpromise, please visit <https://www.abcam.com/abpromise> or contact our technical team.

Terms and conditions

- Guarantee only valid for products bought direct from Abcam or one of our authorized distributors