


## Product datasheet

# Anti-IL-13 receptor alpha 2 antibody ab108534

★★★★☆ [2 Abreviews](#) [1 References](#) [2 Images](#)

### Overview

---

<b>Product name</b>	Anti-IL-13 receptor alpha 2 antibody
<b>Description</b>	Rabbit polyclonal to IL-13 receptor alpha 2
<b>Host species</b>	Rabbit
<b>Tested applications</b>	<b>Suitable for:</b> WB, IHC-P
<b>Species reactivity</b>	<b>Reacts with:</b> Human <b>Predicted to work with:</b> Mouse, Rat 
<b>Immunogen</b>	Recombinant fragment corresponding to Human IL-13 receptor alpha 2 aa 72-349. Database link: <a href="#">BC020739</a>
<b>Positive control</b>	Fetal liver
<b>General notes</b>	<p>The Life Science industry has been in the grips of a reproducibility crisis for a number of years. Abcam is leading the way in addressing this with our range of recombinant monoclonal antibodies and knockout edited cell lines for gold-standard validation. Please check that this product meets your needs before purchasing.</p> <p>If you have any questions, special requirements or concerns, please send us an inquiry and/or contact our Support team ahead of purchase. Recommended alternatives for this product can be found below, along with publications, customer reviews and Q&amp;As</p>

### Properties

---

<b>Form</b>	Lyophilized:Reconstitute with 200ul distilled sterile water. Please note that if you receive this product in liquid form it has already been reconstituted as described and no further reconstitution is necessary.
<b>Storage instructions</b>	Shipped at 4°C. Upon delivery aliquot and store at -20°C. Avoid repeated freeze / thaw cycles.
<b>Storage buffer</b>	Preservative: 0.02% Sodium azide
<b>Purity</b>	Protein A purified
<b>Clonality</b>	Polyclonal
<b>Isotype</b>	IgG

### Applications

---

## The Abpromise guarantee

Our **Abpromise guarantee** covers the use of ab108534 in the following tested applications.

The application notes include recommended starting dilutions; optimal dilutions/concentrations should be determined by the end user.

Application	Abreviews	Notes
WB	★★★★☆ (2)	1/500 - 1/1000. Predicted molecular weight: 44 kDa.
IHC-P		1/100 - 1/500.

## Target

### Function

Binds as a monomer with high affinity to interleukin-13 (IL13), but not to interleukin-4 (IL4).

### Sequence similarities

Belongs to the type I cytokine receptor family. Type 5 subfamily.  
Contains 1 fibronectin type-III domain.

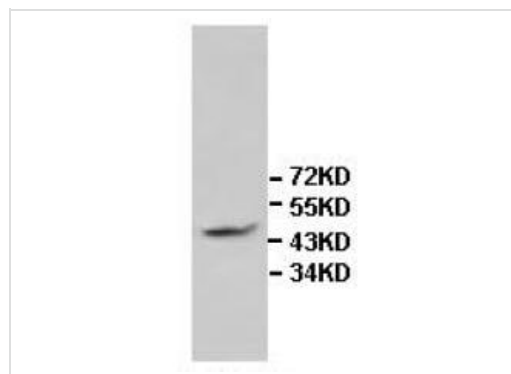
### Domain

The WSXWS motif appears to be necessary for proper protein folding and thereby efficient intracellular transport and cell-surface receptor binding.  
The box 1 motif is required for JAK interaction and/or activation.

### Cellular localization

Membrane.

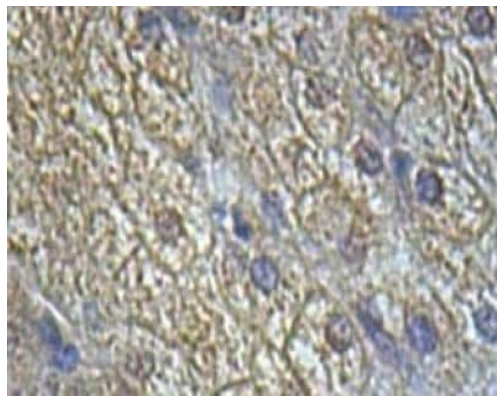
## Images



Anti-IL-13 receptor alpha 2 antibody (ab108534) at 1/500 dilution +  
Human fetal liver lysate

**Predicted band size: 44 kDa**

Western blot - Anti-IL-13 receptor alpha 2 antibody  
(ab108534)



Membrane staining of IL13 receptor alpha 2 in formalin-fixed, paraffin-embedded Human fetal liver tissue with 1/100 ab108534.

Immunohistochemistry (Formalin/PFA-fixed paraffin-embedded sections) - Anti-IL-13 receptor alpha 2 antibody (ab108534)

**Please note:** All products are "FOR RESEARCH USE ONLY. NOT FOR USE IN DIAGNOSTIC PROCEDURES"

### **Our Abpromise to you: Quality guaranteed and expert technical support**

---

- Replacement or refund for products not performing as stated on the datasheet
- Valid for 12 months from date of delivery
- Response to your inquiry within 24 hours
- We provide support in Chinese, English, French, German, Japanese and Spanish
- Extensive multi-media technical resources to help you
- We investigate all quality concerns to ensure our products perform to the highest standards

If the product does not perform as described on this datasheet, we will offer a refund or replacement. For full details of the Abpromise, please visit <https://www.abcam.com/abpromise> or contact our technical team.

### **Terms and conditions**

---

- Guarantee only valid for products bought direct from Abcam or one of our authorized distributors