





## Product datasheet

### Anti-IL-15 antibody ab109082

[1 References](#) [2 Images](#)

#### Overview

<b>Product name</b>	Anti-IL-15 antibody
<b>Description</b>	Rabbit polyclonal to IL-15
<b>Host species</b>	Rabbit
<b>Tested applications</b>	<b>Suitable for:</b> WB, IHC-P
<b>Species reactivity</b>	<b>Reacts with:</b> Human <b>Predicted to work with:</b> Monkey 
<b>Immunogen</b>	Recombinant fragment corresponding to Human IL-15 aa 1 to the C-terminus (C terminal).  <a href="#">Run BLAST with</a>  <a href="#">Run BLAST with</a> 
<b>Positive control</b>	WB: Foetal liver IHC-P: Foetal skeletal muscle
<b>General notes</b>	<p>The Life Science industry has been in the grips of a reproducibility crisis for a number of years. Abcam is leading the way in addressing this with our range of recombinant monoclonal antibodies and knockout edited cell lines for gold-standard validation. Please check that this product meets your needs before purchasing.</p> <p>If you have any questions, special requirements or concerns, please send us an inquiry and/or contact our Support team ahead of purchase. Recommended alternatives for this product can be found below, along with publications, customer reviews and Q&amp;As</p>

#### Properties

<b>Form</b>	Lyophilized:Reconstitute with 200ul distilled sterile water. Please note that if you receive this product in liquid form it has already been reconstituted as described and no further reconstitution is necessary.
<b>Storage instructions</b>	Shipped at 4°C. Store at +4°C short term (1-2 weeks). Upon delivery aliquot. Store at -20°C long term.
<b>Storage buffer</b>	Constituent: Water
<b>Purity</b>	Immunogen affinity purified
<b>Clonality</b>	Polyclonal
<b>Isotype</b>	IgG

#### Applications

## The Abpromise guarantee

Our **Abpromise guarantee** covers the use of ab109082 in the following tested applications.

The application notes include recommended starting dilutions; optimal dilutions/concentrations should be determined by the end user.

Application	Abreviews	Notes
WB		1/500 - 1/1000. Detects a band of approximately 18 kDa.
IHC-P		1/100 - 1/500.

## Target

### Function

Cytokine that stimulates the proliferation of T-lymphocytes. Stimulation by IL-15 requires interaction of IL-15 with components of IL-2R, including IL-2R beta and probably IL-2R gamma but not IL-2R alpha.

### Tissue specificity

Most abundant in placenta and skeletal muscle. It is also detected in the heart, lung, liver and kidney. IL15-S21AA is preferentially expressed in tissues such as testis and thymus.

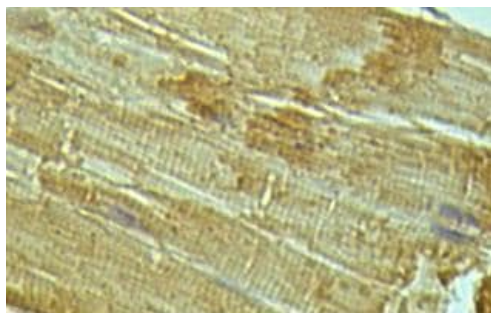
### Sequence similarities

Belongs to the IL-15/IL-21 family.

### Cellular localization

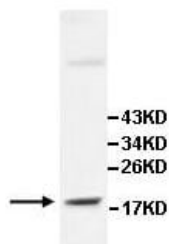
Secreted and Cytoplasm. Nucleus. IL15-S21AA is not secreted, but rather is stored intracellularly, appearing in the nucleus and cytoplasmic components.

## Images



Immunohistochemistry (Formalin/PFA-fixed paraffin-embedded sections) - Anti-IL-15 antibody (ab109082)

Immunohistochemical staining of IL-15 in paraffin-embedded human foetal skeletal muscle tissue with ab109082 (1/100 dilution).



Western blot - Anti-IL-15 antibody (ab109082)

Anti-IL-15 antibody (ab109082) at 1/500 dilution + Foetal liver lysate

**Please note:** All products are "FOR RESEARCH USE ONLY. NOT FOR USE IN DIAGNOSTIC PROCEDURES"

### **Our Abpromise to you: Quality guaranteed and expert technical support**

---

- Replacement or refund for products not performing as stated on the datasheet
- Valid for 12 months from date of delivery
- Response to your inquiry within 24 hours
  
- We provide support in Chinese, English, French, German, Japanese and Spanish
- Extensive multi-media technical resources to help you
- We investigate all quality concerns to ensure our products perform to the highest standards

If the product does not perform as described on this datasheet, we will offer a refund or replacement. For full details of the Abpromise, please visit <https://www.abcam.com/abpromise> or contact our technical team.

### **Terms and conditions**

---

- Guarantee only valid for products bought direct from Abcam or one of our authorized distributors