

Product datasheet

Anti-IL-18R1 antibody ab235115

3 Images

Overview

Product name	Anti-IL-18R1 antibody
Description	Rabbit polyclonal to IL-18R1
Host species	Rabbit
Tested applications	Suitable for: IHC-P, WB
Species reactivity	Reacts with: Human
Immunogen	Recombinant fragment corresponding to Human IL-18R1 aa 1-150. Database link: Q13478 Run BLAST with Run BLAST with
Positive control	WB: Jurkat whole cell lysate. IHC-P: Human pancreas and lung tissue.
General notes	<p>The Life Science industry has been in the grips of a reproducibility crisis for a number of years. Abcam is leading the way in addressing this with our range of recombinant monoclonal antibodies and knockout edited cell lines for gold-standard validation. Please check that this product meets your needs before purchasing.</p> <p>If you have any questions, special requirements or concerns, please send us an inquiry and/or contact our Support team ahead of purchase. Recommended alternatives for this product can be found below, along with publications, customer reviews and Q&As</p>

Properties

Form	Liquid
Storage instructions	Shipped at 4°C. Store at +4°C short term (1-2 weeks). Upon delivery aliquot. Store at -20°C long term. Avoid freeze / thaw cycle.
Storage buffer	pH: 7.40 Preservative: 0.03% Proclin 300 Constituents: PBS, 50% Glycerol (glycerin, glycerine)
Purity	Protein G purified
Purification notes	Purity >95%
Clonality	Polyclonal

Applications

The Abpromise guarantee

Our **Abpromise guarantee** covers the use of ab235115 in the following tested applications.

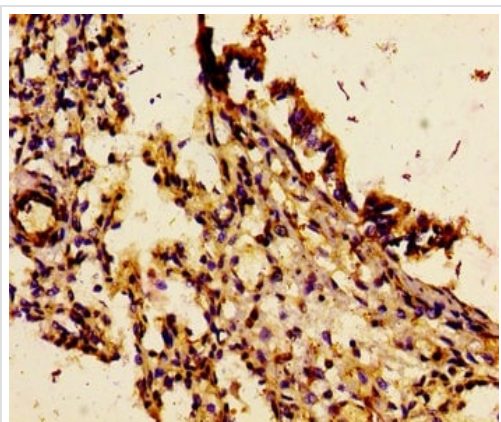
The application notes include recommended starting dilutions; optimal dilutions/concentrations should be determined by the end user.

Application	Abreviews	Notes
IHC-P		1/20 - 1/200.
WB		1/500 - 1/5000. Predicted molecular weight: 62 kDa.

Target

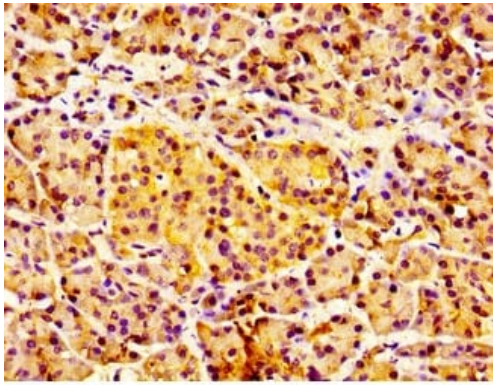
Function	Receptor for interleukin 18 (IL-18). Binding to the agonist leads to the activation of NF-kappa-B.
Tissue specificity	Expressed in lung, leukocytes, spleen, liver, thymus, prostate, small intestine, colon, placenta, and heart, and is absent from brain, skeletal muscle, pancreas, and kidney. High level of expression in Hodgkin disease cell lines.
Sequence similarities	Belongs to the interleukin-1 receptor family. Contains 3 Ig-like C2-type (immunoglobulin-like) domains. Contains 1 TIR domain.
Cellular localization	Membrane.

Images



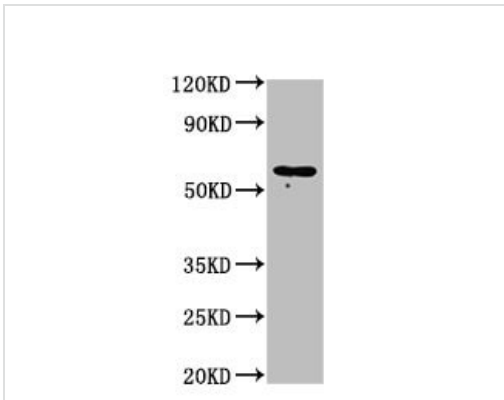
Paraffin-embedded human lung tissue stained for IL18R1 using ab235115 at 1/100 dilution in immunohistochemical analysis.

Immunohistochemistry (Formalin/PFA-fixed paraffin-embedded sections) - Anti-IL-18R1 antibody (ab235115)



Immunohistochemistry (Formalin/PFA-fixed paraffin-embedded sections) - Anti-IL-18R1 antibody (ab235115)

Paraffin-embedded human pancreas tissue stained for IL18R1 using ab235115 at 1/100 dilution in immunohistochemical analysis.



Western blot - Anti-IL-18R1 antibody (ab235115)

Anti-IL-18R1 antibody (ab235115) at 1/500 dilution + Jurkat (human T cell leukemia cell line from peripheral blood) whole cell lysate

Secondary

Goat polyclonal rabbit IgG at 1/50000 dilution

Predicted band size: 62 kDa

Please note: All products are "FOR RESEARCH USE ONLY. NOT FOR USE IN DIAGNOSTIC PROCEDURES"

Our Promise to you: Quality guaranteed and expert technical support

- Replacement or refund for products not performing as stated on the datasheet
- Valid for 12 months from date of delivery
- Response to your inquiry within 24 hours
- We provide support in Chinese, English, French, German, Japanese and Spanish
- Extensive multi-media technical resources to help you
- We investigate all quality concerns to ensure our products perform to the highest standards

If the product does not perform as described on this datasheet, we will offer a refund or replacement. For full details of the Abpromise, please visit <https://www.abcam.com/abpromise> or contact our technical team.

Terms and conditions

- Guarantee only valid for products bought direct from Abcam or one of our authorized distributors