

Product datasheet

Anti-IL-1RAPL1 antibody [MM0353-3R16] ab90453

[1 Image](#)

Overview

Product name	Anti-IL-1RAPL1 antibody [MM0353-3R16]
Description	Mouse monoclonal [MM0353-3R16] to IL-1RAPL1
Host species	Mouse
Tested applications	Suitable for: WB
Species reactivity	Reacts with: Human
Immunogen	Recombinant fragment corresponding to Human IL-1RAPL1.
General notes	<p>The Life Science industry has been in the grips of a reproducibility crisis for a number of years. Abcam is leading the way in addressing this with our range of recombinant monoclonal antibodies and knockout edited cell lines for gold-standard validation. Please check that this product meets your needs before purchasing.</p> <p>If you have any questions, special requirements or concerns, please send us an inquiry and/or contact our Support team ahead of purchase. Recommended alternatives for this product can be found below, along with publications, customer reviews and Q&As</p>

Properties

Form	Liquid
Storage instructions	Shipped at 4°C. Upon delivery aliquot and store at -20°C. Avoid repeated freeze / thaw cycles.
Storage buffer	Constituent: PBS
Purity	Protein G purified
Purification notes	The IgG fraction of culture supernatant was purified by Protein G affinity chromatography and filtered through a 0.2 µm filter.
Clonality	Monoclonal
Clone number	MM0353-3R16
Isotype	IgG2

Applications

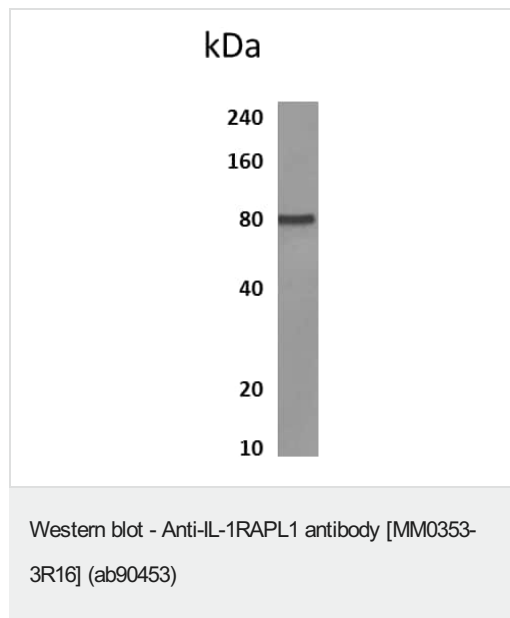
The Abpromise guarantee Our **Abpromise guarantee** covers the use of ab90453 in the following tested applications. The application notes include recommended starting dilutions; optimal dilutions/concentrations should be determined by the end user.

Application	Abreviews	Notes
WB		1/500 - 1/2000. Predicted molecular weight: 80 kDa.

Target

Function	May regulate secretion and presynaptic differentiation through inhibition of the activity of N-type voltage-gated calcium channel. May activate the MAP kinase JNK.
Tissue specificity	Detected at low levels in heart, skeletal muscle, ovary, skin, amygdala, caudate nucleus, corpus callosum, hippocampus, substantia nigra and thalamus. Detected at very low levels in tonsil, prostate, testis, small intestine, placenta, colon and fetal liver.
Involvement in disease	Defects in IL1RAPL1 are the cause of mental retardation X-linked type 21 (MRX21) [MIM:300143]. Mental retardation is a mental disorder characterized by significantly sub-average general intellectual functioning associated with impairments in adaptive behavior and manifested during the developmental period. Non-syndromic mental retardation patients do not manifest other clinical signs.
Sequence similarities	Belongs to the interleukin-1 receptor family. Contains 3 Ig-like C2-type (immunoglobulin-like) domains. Contains 1 TIR domain.
Cellular localization	Cell membrane. Cytoplasm. May localize to the cell body and growth cones of dendrite-like processes.

Images



Anti-IL-1RAPL1 antibody [MM0353-3R16] (ab90453) at 1/2000 dilution (Mouse anti human IL-1 R8) + Lysates of human placental tissue

Predicted band size: 80 kDa

Observed band size: 80 kDa

Please note: All products are "FOR RESEARCH USE ONLY. NOT FOR USE IN DIAGNOSTIC PROCEDURES"

Our Abpromise to you: Quality guaranteed and expert technical support

- Replacement or refund for products not performing as stated on the datasheet
- Valid for 12 months from date of delivery
- Response to your inquiry within 24 hours
- We provide support in Chinese, English, French, German, Japanese and Spanish
- Extensive multi-media technical resources to help you
- We investigate all quality concerns to ensure our products perform to the highest standards

If the product does not perform as described on this datasheet, we will offer a refund or replacement. For full details of the Abpromise, please visit <https://www.abcam.com/abpromise> or contact our technical team.

Terms and conditions

- Guarantee only valid for products bought direct from Abcam or one of our authorized distributors