

Anti-IL-2 Receptor alpha antibody [EPR22588-118] - BSA and Azide free ab256168

Recombinant RabMAb

[2 Images](#)

Overview

Product name	Anti-IL-2 Receptor alpha antibody [EPR22588-118] - BSA and Azide free
Description	Rabbit monoclonal [EPR22588-118] to IL-2 Receptor alpha - BSA and Azide free
Host species	Rabbit
Tested applications	Suitable for: WB, IP Unsuitable for: Flow Cyt, ICC/IF, IHC-Fr or IHC-P
Species reactivity	Reacts with: Mouse
Immunogen	Recombinant fragment. This information is proprietary to Abcam and/or its suppliers.
Positive control	WB: EL4 and WEIH-231 whole cell lysates. IP: WEIH-231 whole cell lysate.
General notes	<p>ab256168 is the carrier-free version of ab255732.</p> <p>Our carrier-free antibodies are typically supplied in a PBS-only formulation, purified and free of BSA, sodium azide and glycerol. The carrier-free buffer and high concentration allow for increased conjugation efficiency.</p> <p>This conjugation-ready format is designed for use with fluorochromes, metal isotopes, oligonucleotides, and enzymes, which makes them ideal for antibody labelling, functional and cell-based assays, flow-based assays (e.g. mass cytometry) and Multiplex Imaging applications.</p> <p>Use our conjugation kits for antibody conjugates that are ready-to-use in as little as 20 minutes with <1 minute hands-on-time and 100% antibody recovery: available for fluorescent dyes, HRP, biotin and gold.</p> <p>This product is compatible with the Maxpar[®] Antibody Labeling Kit from Fluidigm, without the need for antibody preparation. Maxpar[®] is a trademark of Fluidigm Canada Inc.</p> <p>This product is a recombinant monoclonal antibody, which offers several advantages including:</p> <ul style="list-style-type: none">- High batch-to-batch consistency and reproducibility- Improved sensitivity and specificity- Long-term security of supply- Animal-free production <p>For more information see here.</p> <p>Our RabMAb[®] technology is a patented hybridoma-based technology for making rabbit monoclonal antibodies. For details on our patents, please refer to RabMAb[®] patents.</p>

Properties

Form	Liquid
Storage instructions	Shipped at 4°C. Store at +4°C. Do Not Freeze.
Storage buffer	pH: 7.2 Constituent: PBS
Carrier free	Yes
Purity	Protein A purified
Clonality	Monoclonal
Clone number	EPR22588-118
Isotype	IgG

Applications

The Abpromise guarantee Our **Abpromise guarantee** covers the use of ab256168 in the following tested applications. The application notes include recommended starting dilutions; optimal dilutions/concentrations should be determined by the end user.

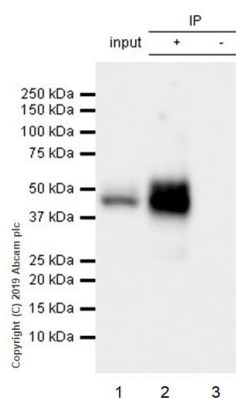
Application	Abreviews	Notes
WB		Use at an assay dependent concentration. Detects a band of approximately 50 kDa (predicted molecular weight: 31 kDa).
IP		Use at an assay dependent concentration.

Application notes Is unsuitable for Flow Cyt, ICC/IF, IHC-Fr or IHC-P.

Target

Function	Receptor for interleukin-2.
Involvement in disease	Genetic variations in IL2RA are associated with susceptibility to diabetes mellitus insulin-dependent type 10 (IDDM10) [MIM:601942]. A multifactorial disorder of glucose homeostasis that is characterized by susceptibility to ketoacidosis in the absence of insulin therapy. Clinical features are polydipsia, polyphagia and polyuria which result from hyperglycemia-induced osmotic diuresis and secondary thirst. These derangements result in long-term complications that affect the eyes, kidneys, nerves, and blood vessels.
Sequence similarities	Contains 2 Sushi (CCP/SCR) domains.
Cellular localization	Membrane.

Images



Immunoprecipitation - Anti-IL-2 Receptor alpha antibody [EPR22588-118] - BSA and Azide free (ab256168)

IL-2 Receptor alpha was immunoprecipitated from 0.35 mg of WEHI-231 (mouse lymphoblast B cell lymphoma cell line) whole cell lysate with **ab255732** at 1/40 dilution. Western blot was performed from the immunoprecipitate using **ab255732** at 1/1000 dilution. VeriBlot for IP Detection Reagent (HRP) (**ab131366**), was used as secondary antibody at 1/5000 dilution.

Lane 1: WEHI-231 whole cell lysate 10 µg (Input).

Lane 2: **ab255732** IP in WEHI whole cell lysate.

Lane 3: Rabbit monoclonal IgG (**ab172730**) instead of **ab255732** in WEHI whole cell lysate.

Blocking and dilution buffer and concentration: 5% NFD/MTBST. Exposure time: 15 seconds.

IL-2 Receptor alpha is a glycoprotein, the molecular weight observed is consistent with what has been described in the literature (PMID: 17475646).

This data was developed using the same antibody clone in a different buffer formulation containing PBS, BSA, glycerol, and sodium azide (**ab255732**).

Why choose a recombinant antibody?



Research with confidence
Consistent and reproducible results



Long-term and scalable supply
Recombinant technology



Success from the first experiment
Confirmed specificity



Ethical standards compliant
Animal-free production

Anti-IL-2 Receptor alpha antibody [EPR22588-118] - BSA and Azide free (ab256168)

Please note: All products are "FOR RESEARCH USE ONLY. NOT FOR USE IN DIAGNOSTIC PROCEDURES"

Our Abpromise to you: Quality guaranteed and expert technical support

- Replacement or refund for products not performing as stated on the datasheet
- Valid for 12 months from date of delivery
- Response to your inquiry within 24 hours

- We provide support in Chinese, English, French, German, Japanese and Spanish
- Extensive multi-media technical resources to help you
- We investigate all quality concerns to ensure our products perform to the highest standards

If the product does not perform as described on this datasheet, we will offer a refund or replacement. For full details of the Abpromise, please visit <https://www.abcam.com/abpromise> or contact our technical team.

Terms and conditions

- Guarantee only valid for products bought direct from Abcam or one of our authorized distributors