


Product datasheet

Anti-IL-2 Receptor alpha antibody [SP176] ab231441

Recombinant RabMAb

★★★★☆ [5 Abreviews](#) [5 References](#) [7 Images](#)

Overview

Product name	Anti-IL-2 Receptor alpha antibody [SP176]
Description	Rabbit monoclonal [SP176] to IL-2 Receptor alpha
Host species	Rabbit
Tested applications	Suitable for: WB, IHC-P, ICC/IF
Species reactivity	Reacts with: Mouse, Human Predicted to work with: Rat 
Immunogen	Synthetic peptide. This information is proprietary to Abcam and/or its suppliers.
Positive control	WB: MOLT-4, HDLM-2 and WEHI-231 whole cell lysate. IHC-P: Human endometrium and tonsil tissue. ICC/IF: HDLM-2 cells
General notes	This product is FOR RESEARCH USE ONLY. For commercial use, please contact partnerships@abcam.com.

Properties

Form	Liquid
Storage instructions	Shipped at 4°C. Store at +4°C short term (1-2 weeks). Upon delivery aliquot. Store at -20°C long term. Avoid freeze / thaw cycle.
Storage buffer	pH: 7.60 Preservative: 0.1% Sodium azide Constituents: PBS, 1% BSA
Purity	Protein A/G purified
Purification notes	Purified from TCS by protein A/G.
Clonality	Monoclonal
Clone number	SP176
Isotype	IgG

Applications

The Abpromise guarantee

Our **Abpromise guarantee** covers the use of ab231441 in the following tested applications.

The application notes include recommended starting dilutions; optimal dilutions/concentrations should be determined by the end user.

Application	Abreviews	Notes
WB		1/200. Predicted molecular weight: 31 kDa.
IHC-P	★★★★☆ (2)	1/100. Boil tissue section in EDTA, pH 8.0 for 10 minutes followed by cooling at room temperature for 20 min. Incubate with ab231441 for 10 minutes at room temperature.
ICC/IF	★★★★☆ (1)	1/50.

Target

Function

Receptor for interleukin-2.

Involvement in disease

Genetic variations in IL2RA are associated with susceptibility to diabetes mellitus insulin-dependent type 10 (IDDM10) [MIM:601942]. A multifactorial disorder of glucose homeostasis that is characterized by susceptibility to ketoacidosis in the absence of insulin therapy. Clinical features are polydipsia, polyphagia and polyuria which result from hyperglycemia-induced osmotic diuresis and secondary thirst. These derangements result in long-term complications that affect the eyes, kidneys, nerves, and blood vessels.

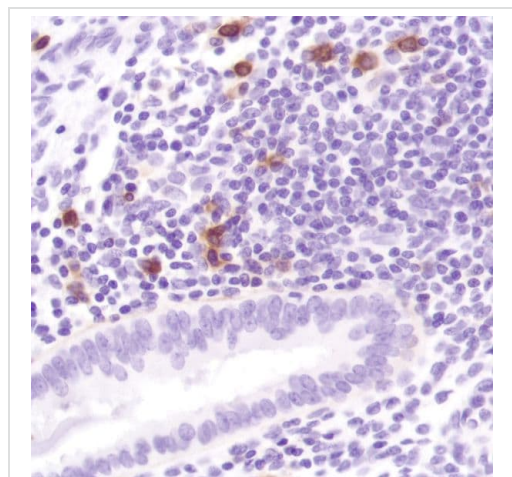
Sequence similarities

Contains 2 Sushi (CCP/SCR) domains.

Cellular localization

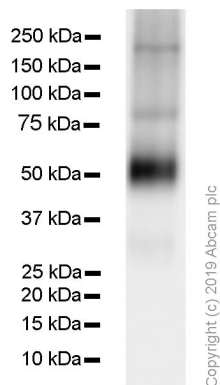
Membrane.

Images



Formalin-fixed, paraffin-embedded human endometrium tissue stained for IL2 Receptor alpha using ab231441 at 1/100 dilution in immunohistochemical analysis.

Immunohistochemistry (Formalin/PFA-fixed paraffin-embedded sections) - Anti-IL-2 Receptor alpha antibody [SP176] (ab231441)



Western blot - Anti-IL-2 Receptor alpha antibody [SP176] (ab231441)

Anti-IL-2 Receptor alpha antibody [SP176] (ab231441) at 0.433 µg/ml + HDLM-2 (Human Hodgkin lymphoma) cell lysate at 20 µg

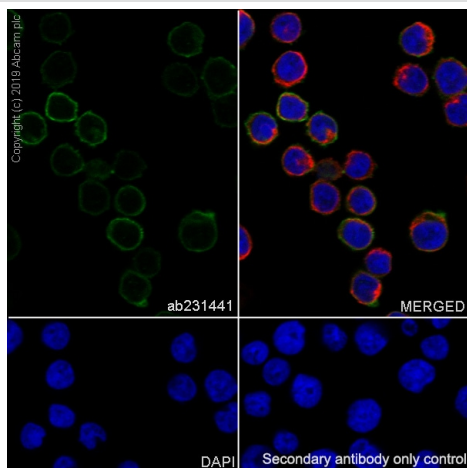
Secondary

Goat Anti-Rabbit IgG H&L (HRP) ([ab97051](#)) at 0.05 µg/ml

Predicted band size: 31 kDa

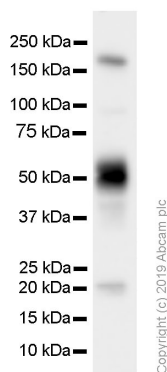
Observed band size: 50 kDa

Blocking/Diluting buffer and concentration: 5% NFDM /TBST



Immunocytochemistry/ Immunofluorescence - Anti-IL-2 Receptor alpha antibody [SP176] (ab231441)

Immunocytochemistry/ Immunofluorescence analysis of HDLM-2 (Human Hodgkin lymphoma) cells labeling IL-2 Receptor alpha with purified ab231441 at 1/50 (9.5µg/mL). Cells were fixed in 100% methanol. Cells were counterstained with [ab195889](#) Anti-alpha Tubulin antibody [DM1A] - Microtubule Marker (Alexa Fluor® 594) 1/200 (2.5 µg/mL). Goat anti rabbit IgG (Alexa Fluor® 488, [ab150077](#)) was used as the secondary antibody at 1/1000 (2 µg/mL) dilution. DAPI (blue) was used as nuclear counterstain. PBS instead of the primary antibody was used as the secondary antibody only control.



Western blot - Anti-IL-2 Receptor alpha antibody [SP176] (ab231441)

Anti-IL-2 Receptor alpha antibody [SP176] (ab231441) at 0.433 µg/ml + WEHI-231 (Mouse B cell lymphoma B lymphocyte) cell lysate at 20 µg

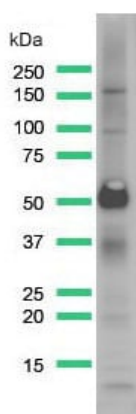
Secondary

Goat Anti-Rabbit IgG H&L (HRP) ([ab97051](#)) at 0.05 µg/ml

Predicted band size: 31 kDa

Observed band size: 50 kDa

Blocking/Diluting buffer and concentration: 5% NFDM /TBST

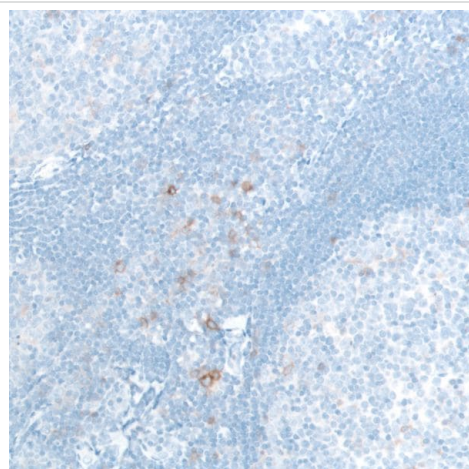


Western blot - Anti-IL-2 Receptor alpha antibody [SP176] (ab231441)

Anti-IL-2 Receptor alpha antibody [SP176] (ab231441) at 1/200 dilution + MOLT-4 (human lymphoblastic leukemia cell line) whole cell lysate

Developed using the ECL technique.

Predicted band size: 31 kDa



Immunohistochemistry (Formalin/PFA-fixed paraffin-embedded sections) - Anti-IL-2 Receptor alpha antibody [SP176] (ab231441)

Formalin-fixed, paraffin-embedded human tonsil tissue stained for IL2 Receptor alpha using ab231441 at 1/100 dilution in immunohistochemical analysis.

Why choose a recombinant antibody?



Research with confidence
Consistent and reproducible results



Long-term and scalable supply
Recombinant technology



Success from the first experiment
Confirmed specificity



Ethical standards compliant
Animal-free production

Anti-IL-2 Receptor alpha antibody [SP176]
(ab231441)

Please note: All products are "FOR RESEARCH USE ONLY. NOT FOR USE IN DIAGNOSTIC PROCEDURES"

Our Abpromise to you: Quality guaranteed and expert technical support

- Replacement or refund for products not performing as stated on the datasheet
- Valid for 12 months from date of delivery
- Response to your inquiry within 24 hours
- We provide support in Chinese, English, French, German, Japanese and Spanish
- Extensive multi-media technical resources to help you
- We investigate all quality concerns to ensure our products perform to the highest standards

If the product does not perform as described on this datasheet, we will offer a refund or replacement. For full details of the Abpromise, please visit <https://www.abcam.com/abpromise> or contact our technical team.

Terms and conditions

- Guarantee only valid for products bought direct from Abcam or one of our authorized distributors