

Product datasheet


Anti-IL-2 Receptor alpha antibody [SP176], prediluted ab150306

Recombinant

RabMAb

3 Images

Overview

Product name	Anti-IL-2 Receptor alpha antibody [SP176], prediluted
Description	Rabbit monoclonal [SP176] to IL-2 Receptor alpha, prediluted
Host species	Rabbit
Tested applications	Suitable for: IHC-P, WB
Species reactivity	Reacts with: Human Predicted to work with: Mouse, Rat 
Immunogen	Synthetic peptide within Human IL-2 Receptor alpha aa 250 to the C-terminus (C terminal). The exact sequence is proprietary. Database link: P01589
Positive control	MOLT4 cell lysate; Human tonsil tissue.
General notes	This product is a recombinant monoclonal antibody, which offers several advantages including: <ul style="list-style-type: none"> - High batch-to-batch consistency and reproducibility - Improved sensitivity and specificity - Long-term security of supply - Animal-free production For more information see here . This product is FOR RESEARCH USE ONLY. For commercial use, please contact partnerships@abcam.com.

Properties

Form	Liquid
Storage instructions	Shipped at 4°C. Store at +4°C. Do Not Freeze.
Storage buffer	pH: 7.60 Preservative: 0.1% Sodium azide Constituents: Tris buffered saline, 1% BSA
Purity	Protein A/G purified
Purification notes	Purified from TCS by protein A/G.

Clonality	Monoclonal
Clone number	SP176
Isotype	IgG

Applications

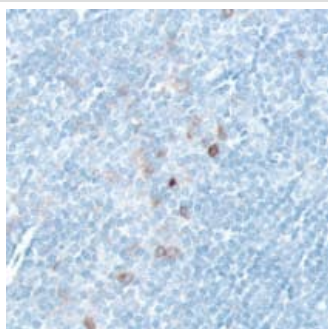
The Abpromise guarantee Our **Abpromise guarantee** covers the use of ab150306 in the following tested applications. The application notes include recommended starting dilutions; optimal dilutions/concentrations should be determined by the end user.

Application	Abreviews	Notes
IHC-P		1/1. Boil tissue section in EDTA buffer, pH 8.0 for 10 min followed by cooling at room temperature for 20 min.
WB		1/1. Predicted molecular weight: 31 kDa.

Target

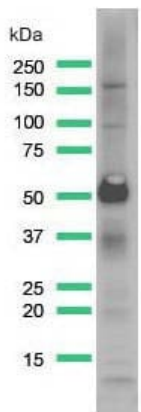
Function	Receptor for interleukin-2.
Involvement in disease	Genetic variations in IL2RA are associated with susceptibility to diabetes mellitus insulin-dependent type 10 (IDDM10) [MIM:601942]. A multifactorial disorder of glucose homeostasis that is characterized by susceptibility to ketoacidosis in the absence of insulin therapy. Clinical features are polydipsia, polyphagia and polyuria which result from hyperglycemia-induced osmotic diuresis and secondary thirst. These derangements result in long-term complications that affect the eyes, kidneys, nerves, and blood vessels.
Sequence similarities	Contains 2 Sushi (CCP/SCR) domains.
Cellular localization	Membrane.

Images



Immunohistochemical analysis of formalin fixed, paraffin embedded Human tonsil tissue labelling IL2 Receptor alpha with ab150306.

Immunohistochemistry (Formalin/PFA-fixed paraffin-embedded sections) - Anti-IL-2 Receptor alpha antibody [SP176], prediluted (ab150306)



Anti-IL-2 Receptor alpha antibody [SP176], prediluted (ab150306)
+ MOLT4 cell lysate

Predicted band size: 31 kDa

Western blot - Anti-IL-2 Receptor alpha antibody
[SP176], prediluted (ab150306)

Why choose a
recombinant antibody?



**Research with
confidence**
Consistent and
reproducible results



**Long-term and
scalable supply**
Recombinant
technology



**Success from the
first experiment**
Confirmed
specificity



**Ethical standards
compliant**
Animal-free
production

Anti-IL-2 Receptor alpha antibody [SP176],
prediluted (ab150306)

Please note: All products are "FOR RESEARCH USE ONLY. NOT FOR USE IN DIAGNOSTIC PROCEDURES"

Our Abpromise to you: Quality guaranteed and expert technical support

- Replacement or refund for products not performing as stated on the datasheet
- Valid for 12 months from date of delivery
- Response to your inquiry within 24 hours
- We provide support in Chinese, English, French, German, Japanese and Spanish
- Extensive multi-media technical resources to help you
- We investigate all quality concerns to ensure our products perform to the highest standards

If the product does not perform as described on this datasheet, we will offer a refund or replacement. For full details of the Abpromise, please visit <https://www.abcam.com/abpromise> or contact our technical team.

Terms and conditions

- Guarantee only valid for products bought direct from Abcam or one of our authorized distributors