


## Product datasheet

# Anti-IL-25 antibody ab108530

[2 References](#) [2 Images](#)

### Overview

---

<b>Product name</b>	Anti-IL-25 antibody
<b>Description</b>	Rabbit polyclonal to IL-25
<b>Host species</b>	Rabbit
<b>Tested applications</b>	<b>Suitable for:</b> WB, IHC-P
<b>Species reactivity</b>	<b>Reacts with:</b> Human <b>Predicted to work with:</b> Rat 
<b>Immunogen</b>	Recombinant full length protein corresponding to Human IL-25 aa 33-177. Database link: <a href="#">BC069565</a>
<b>Positive control</b>	Human fetal lung and kidney lysates; Human fetal prostate tissue.
<b>General notes</b>	<p>The Life Science industry has been in the grips of a reproducibility crisis for a number of years. Abcam is leading the way in addressing this with our range of recombinant monoclonal antibodies and knockout edited cell lines for gold-standard validation. Please check that this product meets your needs before purchasing.</p> <p>If you have any questions, special requirements or concerns, please send us an inquiry and/or contact our Support team ahead of purchase. Recommended alternatives for this product can be found below, along with publications, customer reviews and Q&amp;As</p>

### Properties

---

<b>Form</b>	Liquid
<b>Storage instructions</b>	Shipped at 4°C. Upon delivery aliquot and store at -20°C. Avoid repeated freeze / thaw cycles.
<b>Storage buffer</b>	pH: 7.20 Preservative: 0.02% Sodium azide Constituent: PBS  Buffer contains non-immune IgG.
<b>Purity</b>	Immunogen affinity purified
<b>Clonality</b>	Polyclonal
<b>Isotype</b>	IgG

## Applications

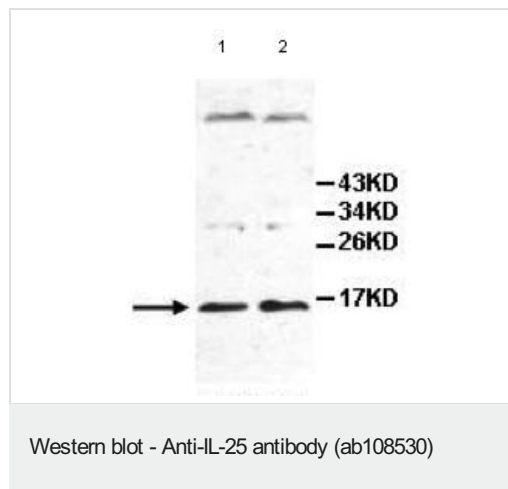
**The Abpromise guarantee** Our **Abpromise guarantee** covers the use of ab108530 in the following tested applications. The application notes include recommended starting dilutions; optimal dilutions/concentrations should be determined by the end user.

Application	Abreviews	Notes
WB		1/500 - 1/1000. Predicted molecular weight: 20 kDa.
IHC-P		1/100 - 1/500.

## Target

<b>Function</b>	Induces activation of NF-kappa-B and stimulates production of the proinflammatory chemokine IL-8. Proinflammatory cytokine favoring Th2-type immune responses.
<b>Tissue specificity</b>	Expressed at low levels in several tissues, including brain, kidney, lung, prostate, testis, spinal cord, adrenal gland, and trachea.
<b>Sequence similarities</b>	Belongs to the IL-17 family.
<b>Cellular localization</b>	Secreted.

## Images

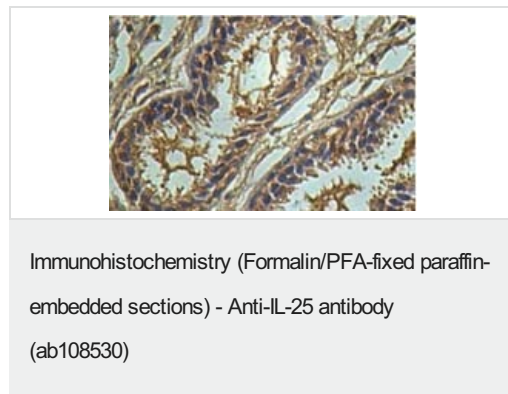


**All lanes** : Anti-IL-25 antibody (ab108530) at 1/500 dilution

**Lane 1** : Human fetal lung lysate

**Lane 2** : Human fetal kidney lysate

**Predicted band size:** 20 kDa



ab108530 at 1/100 dilution staining IL17E in Human fetal prostate by Immunohistochemistry, Formalin-fixed, Paraffin-embedded tissue.

**Please note:** All products are "FOR RESEARCH USE ONLY. NOT FOR USE IN DIAGNOSTIC PROCEDURES"

### **Our Abpromise to you: Quality guaranteed and expert technical support**

---

- Replacement or refund for products not performing as stated on the datasheet
- Valid for 12 months from date of delivery
- Response to your inquiry within 24 hours
  
- We provide support in Chinese, English, French, German, Japanese and Spanish
- Extensive multi-media technical resources to help you
- We investigate all quality concerns to ensure our products perform to the highest standards

If the product does not perform as described on this datasheet, we will offer a refund or replacement. For full details of the Abpromise, please visit <https://www.abcam.com/abpromise> or contact our technical team.

### **Terms and conditions**

---

- Guarantee only valid for products bought direct from Abcam or one of our authorized distributors