

# Anti-IL-36R antibody ab180894

[4 References](#) [3 Images](#)

## Overview

<b>Product name</b>	Anti-IL-36R antibody
<b>Description</b>	Rabbit polyclonal to IL-36R
<b>Host species</b>	Rabbit
<b>Specificity</b>	ab180894 will detect all three isoforms of IL1RL2. ab180894 is predicted to not cross-react with IL1 Receptor I or ST2.
<b>Tested applications</b>	<b>Suitable for:</b> IHC-P, WB
<b>Species reactivity</b>	<b>Reacts with:</b> Human
<b>Immunogen</b>	Synthetic peptide corresponding to Human IL-36R (internal sequence). (16 amino acid peptide; NP_003845). Database link: <a href="#">Q9HB29</a>
<b>Positive control</b>	Human small intestine lysate and tissue.
<b>General notes</b>	<p>The Life Science industry has been in the grips of a reproducibility crisis for a number of years. Abcam is leading the way in addressing this with our range of recombinant monoclonal antibodies and knockout edited cell lines for gold-standard validation. Please check that this product meets your needs before purchasing.</p> <p>If you have any questions, special requirements or concerns, please send us an inquiry and/or contact our Support team ahead of purchase. Recommended alternatives for this product can be found below, along with publications, customer reviews and Q&amp;As</p>

## Properties

<b>Form</b>	Liquid
<b>Storage instructions</b>	Shipped at 4°C. Store at +4°C short term (1-2 weeks). Store at +4°C.
<b>Storage buffer</b>	pH: 7.2 Preservative: 0.02% Sodium azide Constituent: 99% PBS
<b>Purity</b>	Immunogen affinity purified
<b>Clonality</b>	Polyclonal
<b>Isotype</b>	IgG

## Applications

### The Abpromise guarantee

Our **Abpromise guarantee** covers the use of ab180894 in the following tested applications.

The application notes include recommended starting dilutions; optimal dilutions/concentrations should be determined by the end user.

Application	Abreviews	Notes
IHC-P		Use a concentration of 5 - 20 µg/ml.
WB		Use a concentration of 1 - 2 µg/ml. Detects a band of approximately 55 kDa (predicted molecular weight: 65 kDa).

## Target

### Function

Receptor for interleukin 1 family member 9 (IL1F9). Binding to the agonist leads to the activation of NF-kappa-B.

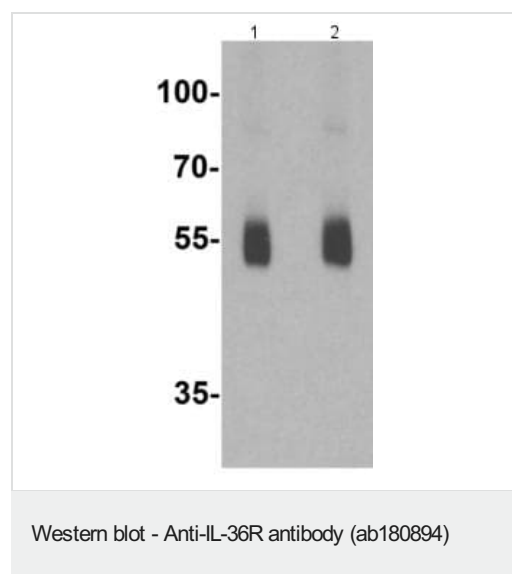
### Sequence similarities

Belongs to the interleukin-1 receptor family.  
Contains 3 Ig-like C2-type (immunoglobulin-like) domains.  
Contains 1 TIR domain.

### Cellular localization

Membrane.

## Images



**Lane 1** : Anti-IL-36R antibody (ab180894) at 1 µg/ml

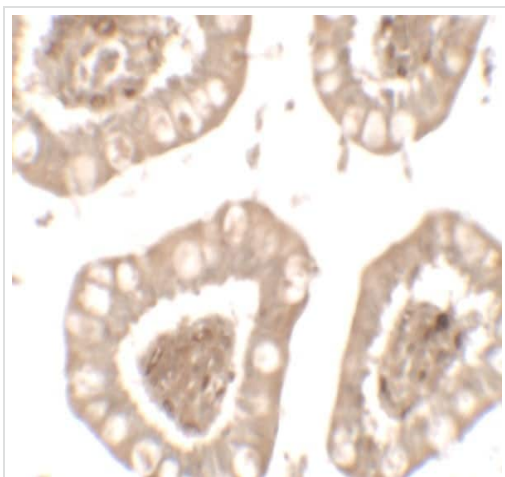
**Lane 2** : Anti-IL-36R antibody (ab180894) at 2 µg/ml

**All lanes** : Human small intestine lysate

Lysates/proteins at 15 µg per lane.

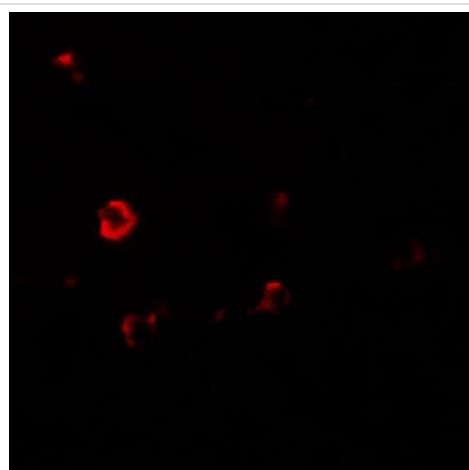
**Predicted band size:** 65 kDa

**Observed band size:** 55 kDa



Immunohistochemical analysis of paraffin-embedded Human small intestine tissue labeling IL1RL2 with ab180894 at 5 µg/ml.

Immunohistochemistry (Formalin/PFA-fixed paraffin-embedded sections) - Anti-IL-36R antibody (ab180894)



Immunohistochemical analysis of paraffin-embedded Human small intestine tissue labeling IL1RL2 with ab180894 at 20 µg/ml.

Immunohistochemistry (Formalin/PFA-fixed paraffin-embedded sections) - Anti-IL-36R antibody (ab180894)

**Please note:** All products are "FOR RESEARCH USE ONLY. NOT FOR USE IN DIAGNOSTIC PROCEDURES"

**Our Abpromise to you: Quality guaranteed and expert technical support**

- Replacement or refund for products not performing as stated on the datasheet
- Valid for 12 months from date of delivery
- Response to your inquiry within 24 hours
- We provide support in Chinese, English, French, German, Japanese and Spanish
- Extensive multi-media technical resources to help you
- We investigate all quality concerns to ensure our products perform to the highest standards

If the product does not perform as described on this datasheet, we will offer a refund or replacement. For full details of the Abpromise, please visit <https://www.abcam.com/abpromise> or contact our technical team.

#### **Terms and conditions**

---

- Guarantee only valid for products bought direct from Abcam or one of our authorized distributors