

### Anti-IL36 beta/IL-1F8 antibody - C-terminal ab180890

[4 References](#) [3 Images](#)

#### Overview

<b>Product name</b>	Anti-IL36 beta/IL-1F8 antibody - C-terminal
<b>Description</b>	Rabbit polyclonal to IL36 beta/IL-1F8 - C-terminal
<b>Host species</b>	Rabbit
<b>Specificity</b>	ab180890 will only detect the longer isoform of IL36 beta / IL-1F8. ab180890 will not cross-react with IL36 alpha or IL36 gamma.
<b>Tested applications</b>	<b>Suitable for:</b> WB, IHC-P
<b>Species reactivity</b>	<b>Reacts with:</b> Human
<b>Immunogen</b>	Synthetic peptide corresponding to Human IL36 beta/IL-1F8 (C terminal). (16 amino acid peptide; NP_055253). Database link: <a href="#">Q9NZH7</a>
<b>Positive control</b>	A549 cell lysate; Human lung tissue.
<b>General notes</b>	<p>The Life Science industry has been in the grips of a reproducibility crisis for a number of years. Abcam is leading the way in addressing this with our range of recombinant monoclonal antibodies and knockout edited cell lines for gold-standard validation. Please check that this product meets your needs before purchasing.</p> <p>If you have any questions, special requirements or concerns, please send us an inquiry and/or contact our Support team ahead of purchase. Recommended alternatives for this product can be found below, along with publications, customer reviews and Q&amp;As</p>

#### Properties

<b>Form</b>	Liquid
<b>Storage instructions</b>	Shipped at 4°C. Store at +4°C short term (1-2 weeks). Upon delivery aliquot. Store at -20°C long term. Avoid freeze / thaw cycle.
<b>Storage buffer</b>	pH: 7.2 Preservative: 0.02% Sodium azide Constituent: 99% PBS
<b>Purity</b>	Immunogen affinity purified
<b>Clonality</b>	Polyclonal
<b>Isotype</b>	IgG

## Applications

### The Abpromise guarantee

Our **Abpromise guarantee** covers the use of ab180890 in the following tested applications.

The application notes include recommended starting dilutions; optimal dilutions/concentrations should be determined by the end user.

Application	Abreviews	Notes
WB		Use a concentration of 1 - 2 µg/ml. Detects a band of approximately 17 kDa (predicted molecular weight: 19 kDa).
IHC-P		Use a concentration of 2.5 - 20 µg/ml.

## Target

### Tissue specificity

Expression at low levels in tonsil, bone marrow, heart, placenta, lung, testis and colon but not in other tissues or in any hematopoietic cell lines.

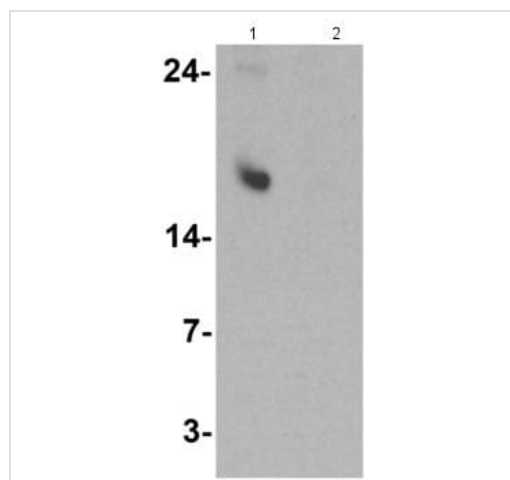
### Sequence similarities

Belongs to the IL-1 family.

### Cellular localization

Secreted.

## Images



Western blot - Anti-IL36 beta/IL-1F8 antibody - C-terminal (ab180890)

**All lanes :** Anti-IL36 beta/IL-1F8 antibody - C-terminal (ab180890)  
at 1 µg/ml

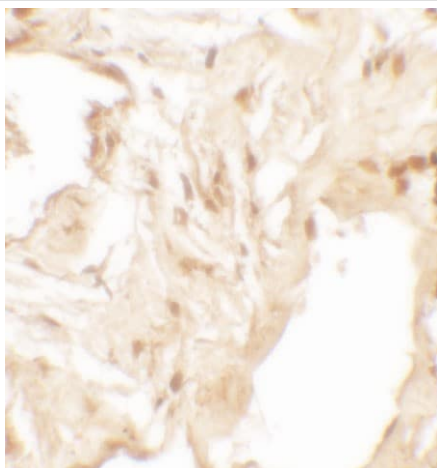
**Lane 1 :** A549 cell lysate

**Lane 2 :** A549 cell lysate with blocking peptide

Lysates/proteins at 15 µg per lane.

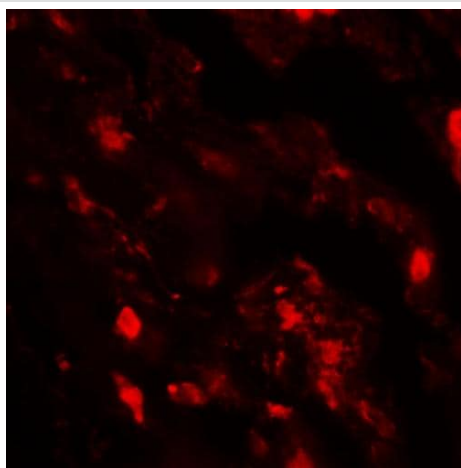
**Predicted band size:** 19 kDa

**Observed band size:** 17 kDa



Immunohistochemical analysis of paraffin-embedded Human lung tissue labeling IL36 beta / IL-1F8 with ab180890 at 2.5 µg/ml.

Immunohistochemistry (Formalin/PFA-fixed paraffin-embedded sections) - Anti-IL36 beta/IL-1F8 antibody  
- C-terminal (ab180890)



Immunohistochemical analysis of Human lung tissue labeling IL36 beta / IL-1F8 with ab180890 at 20 µg/ml.

Immunohistochemistry (Formalin/PFA-fixed paraffin-embedded sections) - Anti-IL36 beta/IL-1F8 antibody  
- C-terminal (ab180890)

**Please note:** All products are "FOR RESEARCH USE ONLY. NOT FOR USE IN DIAGNOSTIC PROCEDURES"

**Our Abpromise to you: Quality guaranteed and expert technical support**

- Replacement or refund for products not performing as stated on the datasheet
- Valid for 12 months from date of delivery
- Response to your inquiry within 24 hours
- We provide support in Chinese, English, French, German, Japanese and Spanish
- Extensive multi-media technical resources to help you
- We investigate all quality concerns to ensure our products perform to the highest standards

If the product does not perform as described on this datasheet, we will offer a refund or replacement. For full details of the Abpromise, please visit <https://www.abcam.com/abpromise> or contact our technical team.

#### **Terms and conditions**

---

- Guarantee only valid for products bought direct from Abcam or one of our authorized distributors