


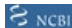


Anti-ILF1 antibody ab5298

[7 References](#) [5 Images](#)

Overview

Product name	Anti-ILF1 antibody
Description	Goat polyclonal to ILF1
Host species	Goat
Tested applications	Suitable for: Flow Cyt (Intra), ICC/IF, WB
Species reactivity	Reacts with: Human
Immunogen	Synthetic peptide: TPPAAVREKGVQN, corresponding to C terminal amino acids 648-660 of Human ILF1.  Run BLAST with   Run BLAST with 
Positive control	Flow Cyt (Intra): HeLa cells.
General notes	<p>The Life Science industry has been in the grips of a reproducibility crisis for a number of years. Abcam is leading the way in addressing this with our range of recombinant monoclonal antibodies and knockout edited cell lines for gold-standard validation. Please check that this product meets your needs before purchasing.</p> <p>If you have any questions, special requirements or concerns, please send us an inquiry and/or contact our Support team ahead of purchase. Recommended alternatives for this product can be found below, along with publications, customer reviews and Q&As</p>

Properties

Form	Liquid
Storage instructions	Shipped at 4°C. Store at +4°C short term (1-2 weeks). Upon delivery aliquot. Store at -20°C or -80°C. Avoid freeze / thaw cycle.
Storage buffer	pH: 7.30 Preservative: 0.02% Sodium azide Constituents: 0.5% Tris buffered saline, 0.5% BSA
Purity	Immunogen affinity purified
Purification notes	Purified from goat serum by ammonium sulphate precipitation followed by antigen affinity chromatography using the immunizing peptide.
Clonality	Polyclonal
Isotype	IgG

Applications

The Abpromise guarantee

Our **Abpromise guarantee** covers the use of ab5298 in the following tested applications.

The application notes include recommended starting dilutions; optimal dilutions/concentrations should be determined by the end user.

Application	Abreviews	Notes
Flow Cyt (Intra)		Use a concentration of 10 µg/ml.
ICC/IF		Use a concentration of 10 µg/ml.
WB		Use a concentration of 0.01 - 0.03 µg/ml. Detects a band of approximately 75-80 kDa (predicted molecular weight: 73 kDa). A 1 hour primary incubation is recommended for this product.

Target

Function

Recognizes the core sequence 5'-TAAACA-3'. Binds to NFAT-like motifs (purine-rich) in the IL2 promoter. Also binds to HIV-1 long terminal repeat. May be involved in both positive and negative regulation of important viral and cellular promoter elements.

Tissue specificity

Expressed in both lymphoid and non-lymphoid cells.

Sequence similarities

Contains 1 FHA domain.
Contains 1 fork-head DNA-binding domain.

Domain

The C-terminal part of the DNA-binding domain may contribute to DNA recognition specificity.

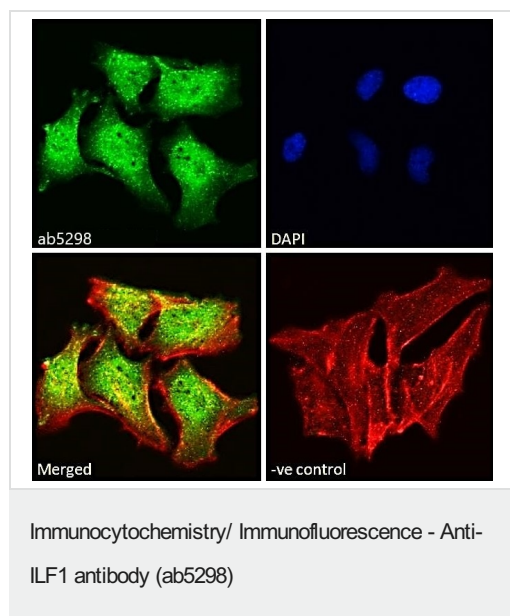
Post-translational modifications

Phosphorylated upon DNA damage, probably by ATM or ATR.

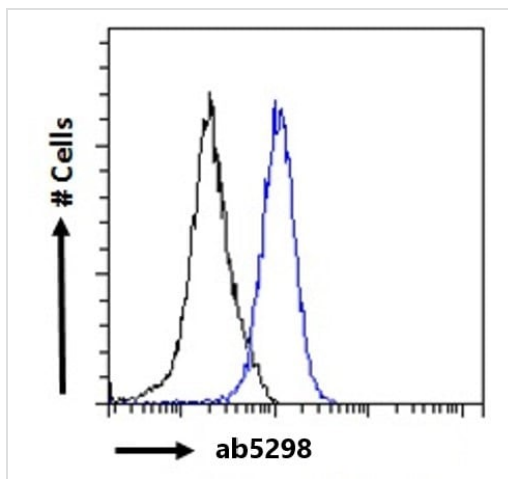
Cellular localization

Nucleus.

Images

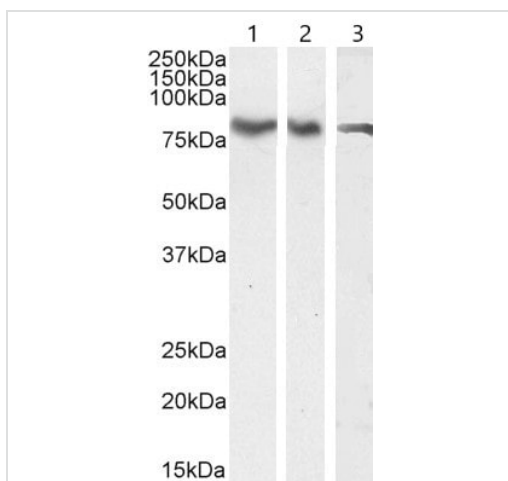


Immunofluorescent analysis of paraformaldehyde fixed HeLa cells, labeling ILF-1 with ab5298. Cells permeabilized with 0.15% Triton. Primary incubation 1hr (10 µg/mL) followed by Alexa Fluor 488 secondary antibody (2 µg/mL), showing nuclear and cytoplasmic/vesicle staining. Actin filaments were stained with phalloidin (red) and the nuclear stain is DAPI (blue). Negative control: Unimmunized goat IgG (10 µg/mL) followed by Alexa Fluor 488 secondary antibody (2 µg/mL).



Flow Cytometry (Intracellular) - Anti-ILF1 antibody (ab5298)

Flow cytometric analysis of paraformaldehyde fixed HeLa cells (blue line) labeling ILF1 with ab5298. Cells permeabilized with 0.5% Triton. Primary incubation 1hr (10 $\mu\text{g/mL}$) followed by Alexa Fluor 488 secondary antibody (1 $\mu\text{g/mL}$). IgG control: Unimmunized goat IgG (black line) followed by Alexa Fluor 488 secondary antibody.



Western blot - Anti-ILF1 antibody (ab5298)

All lanes : Anti-ILF1 antibody (ab5298) at 0.03 $\mu\text{g/ml}$

Lane 1 : HEK-293 (human epithelial cell line from embryonic kidney) nuclear cell lysate

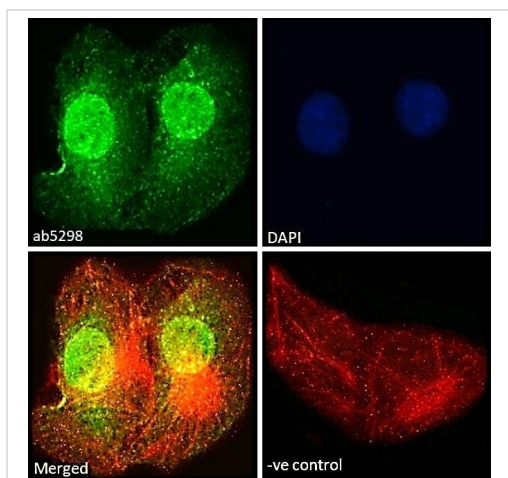
Lane 2 : HeLa (human epithelial cell line from cervix adenocarcinoma) nuclear cell lysate

Lane 3 : Jurkat (human T cell leukemia cell line from peripheral blood) nuclear cell lysate

Lysates/proteins at 35 μg per lane.

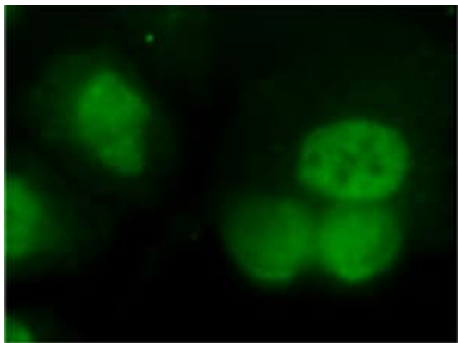
Predicted band size: 73 kDa

Observed band size: 80 kDa



Immunocytochemistry/ Immunofluorescence - Anti-ILF1 antibody (ab5298)

Immunofluorescent analysis of paraformaldehyde fixed U2OS cells, labeling ILF-1 with ab5298. Cells permeabilized with 0.15% Triton. Primary incubation 1hr (10 $\mu\text{g/mL}$) followed by Alexa Fluor 488 secondary antibody (2 $\mu\text{g/mL}$), showing nuclear and cytoplasmic/vesicle staining. Actin filaments were stained with phalloidin (red) and the nuclear stain is DAPI (blue). Negative control: Unimmunized goat IgG (10 $\mu\text{g/mL}$) followed by Alexa Fluor 488 secondary antibody (2 $\mu\text{g/mL}$).



Immunocytochemistry/ Immunofluorescence - Anti-ILF1 antibody (ab5298)

Image from Marais A et al., J Biol Chem. 2010 Nov 12;285(46):35728-39. Epub 2010 Sep 1. Fig 2.; doi: 10.1074/jbc.M110.154005; November 12, 2010, The Journal of Biological Chemistry, 285, 35728-35739.

Immunofluorescence analysis of U2OS cells, staining ILF1 with ab5298. Cells were fixed with 4% paraformaldehyde and incubated with primary antibody at 1/100 dilution. A FITC-conjugated rabbit anti-goat IgG was used as the secondary antibody.

Please note: All products are "FOR RESEARCH USE ONLY. NOT FOR USE IN DIAGNOSTIC PROCEDURES"

Our Abpromise to you: Quality guaranteed and expert technical support

- Replacement or refund for products not performing as stated on the datasheet
- Valid for 12 months from date of delivery
- Response to your inquiry within 24 hours
- We provide support in Chinese, English, French, German, Japanese and Spanish
- Extensive multi-media technical resources to help you
- We investigate all quality concerns to ensure our products perform to the highest standards

If the product does not perform as described on this datasheet, we will offer a refund or replacement. For full details of the Abpromise, please visit <https://www.abcam.com/abpromise> or contact our technical team.

Terms and conditions

- Guarantee only valid for products bought direct from Abcam or one of our authorized distributors