


Product datasheet

Anti-ILF1 antibody ab84761

[2 References](#) [1 Image](#)

Overview

Product name	Anti-ILF1 antibody
Description	Rabbit polyclonal to ILF1
Host species	Rabbit
Tested applications	Suitable for: IHC-P
Species reactivity	Reacts with: Human Predicted to work with: Chimpanzee, Gorilla, Orangutan, Elephant 
Immunogen	Synthetic peptide corresponding to a region between residue 635 and 660 of Human ILF1 (NP_004505.2).
Positive control	Human Anaplastic Thyroid Carcinoma, Breast Carcinoma, Ovarian Carcinoma, Pancreatic Islet Cell Tumor, Prostate Carcinoma and Small Cell Lung Cancer.
General notes	<p>The Life Science industry has been in the grips of a reproducibility crisis for a number of years. Abcam is leading the way in addressing this with our range of recombinant monoclonal antibodies and knockout edited cell lines for gold-standard validation. Please check that this product meets your needs before purchasing.</p> <p>If you have any questions, special requirements or concerns, please send us an inquiry and/or contact our Support team ahead of purchase. Recommended alternatives for this product can be found below, along with publications, customer reviews and Q&As</p>

Properties

Form	Liquid
Storage instructions	Shipped at 4°C. Upon delivery aliquot and store at -20°C. Avoid freeze / thaw cycles.
Storage buffer	pH: 6.8 Preservative: 0.09% Sodium azide Constituents: 0.1% BSA, Tris buffered saline
Purity	Immunogen affinity purified
Clonality	Polyclonal
Isotype	IgG

Applications

The Abpromise guarantee

Our **Abpromise guarantee** covers the use of ab84761 in the following tested applications.

The application notes include recommended starting dilutions; optimal dilutions/concentrations should be determined by the end user.

Application	Abreviews	Notes
IHC-P		

Application notes

IHC-P: 1/100 - 1/500.

Epitope exposure is recommended.

Epitope exposure with citrate buffer will enhance staining.

Not yet tested in other applications.

Optimal dilutions/concentrations should be determined by the end user.

Target

Function

Recognizes the core sequence 5'-TAAACA-3'. Binds to NFAT-like motifs (purine-rich) in the IL2 promoter. Also binds to HIV-1 long terminal repeat. May be involved in both positive and negative regulation of important viral and cellular promoter elements.

Tissue specificity

Expressed in both lymphoid and non-lymphoid cells.

Sequence similarities

Contains 1 FHA domain.

Contains 1 fork-head DNA-binding domain.

Domain

The C-terminal part of the DNA-binding domain may contribute to DNA recognition specificity.

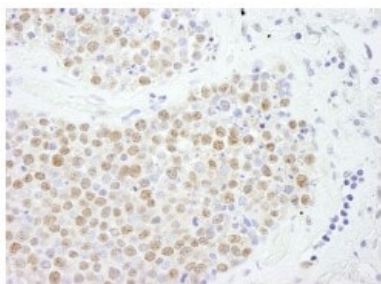
Post-translational modifications

Phosphorylated upon DNA damage, probably by ATM or ATR.

Cellular localization

Nucleus.

Images



Detection of Human ILF1 by Immunohistochemistry in formalin-fixed, paraffin-embedded human small cell lung cancer using ab84761, at 1/250 dilution, and DAB staining.

Immunohistochemistry (Formalin/PFA-fixed paraffin-embedded sections) - Anti-ILF1 antibody (ab84761)

Please note: All products are "FOR RESEARCH USE ONLY. NOT FOR USE IN DIAGNOSTIC PROCEDURES"

Our Abpromise to you: Quality guaranteed and expert technical support

- Replacement or refund for products not performing as stated on the datasheet
- Valid for 12 months from date of delivery
- Response to your inquiry within 24 hours

- We provide support in Chinese, English, French, German, Japanese and Spanish
- Extensive multi-media technical resources to help you
- We investigate all quality concerns to ensure our products perform to the highest standards

If the product does not perform as described on this datasheet, we will offer a refund or replacement. For full details of the Abpromise, please visit <https://www.abcam.com/abpromise> or contact our technical team.

Terms and conditions

- Guarantee only valid for products bought direct from Abcam or one of our authorized distributors