

### Anti-ILT-3 antibody [EPR22030] $\alpha$ b224716

Recombinant RabMAb

2 Images

#### Overview

<b>Product name</b>	Anti-ILT-3 antibody [EPR22030]
<b>Description</b>	Rabbit monoclonal [EPR22030] to ILT-3
<b>Host species</b>	Rabbit
<b>Tested applications</b>	<b>Suitable for:</b> Flow Cyt <b>Unsuitable for:</b> ICC/IF, IHC-P or WB
<b>Species reactivity</b>	<b>Reacts with:</b> Human
<b>Immunogen</b>	Recombinant fragment. This information is proprietary to Abcam and/or its suppliers.
<b>Positive control</b>	Flow Cyt: Human peripheral blood mononuclear cells (PBMCs).
<b>General notes</b>	This product is a recombinant monoclonal antibody, which offers several advantages including: <ul style="list-style-type: none"> <li>- High batch-to-batch consistency and reproducibility</li> <li>- Improved sensitivity and specificity</li> <li>- Long-term security of supply</li> <li>- Animal-free production</li> </ul> For more information <a href="#">see here</a> . Our RabMAb <sup>®</sup> technology is a patented hybridoma-based technology for making rabbit monoclonal antibodies. For details on our patents, please refer to <a href="#">RabMAb<sup>®</sup> patents</a> .

#### Properties

<b>Form</b>	Liquid
<b>Storage instructions</b>	Shipped at 4°C. Store at +4°C short term (1-2 weeks). Upon delivery aliquot. Store at -20°C long term. Avoid freeze / thaw cycle.
<b>Storage buffer</b>	pH: 7.2 Preservative: 0.01% Sodium azide Constituents: PBS, 40% Glycerol (glycerin, glycerine), 0.05% BSA
<b>Purity</b>	Protein A purified
<b>Clonality</b>	Monoclonal
<b>Clone number</b>	EPR22030
<b>Isotype</b>	IgG

## Applications

### The Abpromise guarantee

Our **Abpromise guarantee** covers the use of ab224716 in the following tested applications.

The application notes include recommended starting dilutions; optimal dilutions/concentrations should be determined by the end user.

Application	Abreviews	Notes
Flow Cyt		1/600.

### Application notes

Is unsuitable for ICC/IF, IHC-P or WB.

## Target

### Function

Receptor for class I MHC antigens. Recognizes a broad spectrum of HLA-A, HLA-B, HLA-C and HLA-G alleles. Involved in the down-regulation of the immune response and the development of tolerance, e.g. towards transplants. Interferes with TNFRSF5-signaling and NF-kappa-B up-regulation. Inhibits receptor-mediated phosphorylation of cellular proteins and mobilization of intracellular calcium ions.

### Tissue specificity

Detected in monocytes, macrophages, dendritic cells, lung, natural killer cells and B-cells.

### Sequence similarities

Contains 2 Ig-like C2-type (immunoglobulin-like) domains.

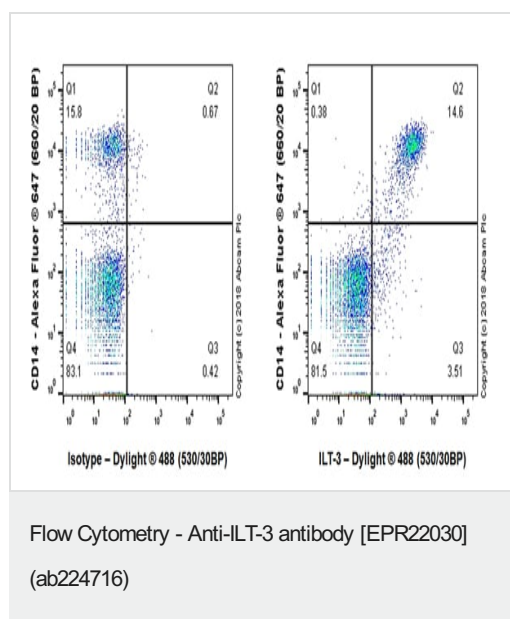
### Domain

Contains 3 copies of a cytoplasmic motif that is referred to as the immunoreceptor tyrosine-based inhibitor motif (ITIM). This motif is involved in modulation of cellular responses. The phosphorylated ITIM motif can bind the SH2 domain of several SH2-containing phosphatases.

### Cellular localization

Cell membrane. Ligand binding leads to internalization and translocation to an antigen-processing compartment.

## Images







Flow cytometric analysis of human peripheral blood mononuclear cells (PBMCs) labeling ILT-3 with ab224716 at 1/600 dilution (right panel) compared with a Rabbit IgG, monoclonal [EPR25A] - Isotype Control (**ab172730**) (left panel). Goat Anti-Rabbit IgG H&L (Dylight<sup>®</sup> 488) (**ab98462**) at 1/2000 dilution was used as the secondary antibody.

Cells were stained with Alexa Fluor<sup>®</sup> 647-conjugated CD14 (a monocyte marker) and rabbit IgG (left, **ab172370**) or anti-ILT-3 RabMAb (right, ab224716). Data shown was gated on viable cells.

The ILT-3 expression pattern has been described in literature (PMID:17266150; PMID:9151699).

Why choose a recombinant antibody?

 <p><b>Research with confidence</b> Consistent and reproducible results</p>	 <p><b>Long-term and scalable supply</b> Recombinant technology</p>
 <p><b>Success from the first experiment</b> Confirmed specificity</p>	 <p><b>Ethical standards compliant</b> Animal-free production</p>

Anti-LT-3 antibody [EPR22030] (ab224716)

**Please note:** All products are "FOR RESEARCH USE ONLY. NOT FOR USE IN DIAGNOSTIC PROCEDURES"

### Our Abpromise to you: Quality guaranteed and expert technical support

---

- Replacement or refund for products not performing as stated on the datasheet
- Valid for 12 months from date of delivery
- Response to your inquiry within 24 hours
- We provide support in Chinese, English, French, German, Japanese and Spanish
- Extensive multi-media technical resources to help you
- We investigate all quality concerns to ensure our products perform to the highest standards

If the product does not perform as described on this datasheet, we will offer a refund or replacement. For full details of the Abpromise, please visit <https://www.abcam.com/abpromise> or contact our technical team.

### Terms and conditions

---

- Guarantee only valid for products bought direct from Abcam or one of our authorized distributors