


Anti-Importin 13 antibody ab95993

[2 References](#) [3 Images](#)

Overview

Product name	Anti-Importin 13 antibody
Description	Rabbit polyclonal to Importin 13
Host species	Rabbit
Tested applications	Suitable for: WB, IP, ICC/IF
Species reactivity	Reacts with: Human Predicted to work with: Mouse, Rat, Cow 
Immunogen	Synthetic peptide containing a sequence corresponding to a region within amino acids 901-963 (SMWIKEALQP PGFPSARLSP EQKDTFSQQI LRERVNKRRV KEMVKEFTLL CRGLHGTDYT ADY) of Human Importin 13 (NP_055467). Run BLAST with ExPASy Run BLAST with NCBI
Positive control	HeLa whole cell lysate (ab150035); HeLa cells
General notes	<p>The Life Science industry has been in the grips of a reproducibility crisis for a number of years. Abcam is leading the way in addressing this with our range of recombinant monoclonal antibodies and knockout edited cell lines for gold-standard validation. Please check that this product meets your needs before purchasing.</p> <p>If you have any questions, special requirements or concerns, please send us an inquiry and/or contact our Support team ahead of purchase. Recommended alternatives for this product can be found below, along with publications, customer reviews and Q&As</p>

Properties

Form	Liquid
Storage instructions	Shipped at 4°C. Upon delivery aliquot and store at -20°C. Avoid repeated freeze / thaw cycles.
Storage buffer	pH: 7.00 Preservative: 0.01% Thimerosal (merthiolate) Constituents: 1.21% Tris, 0.75% Glycine, 10% Glycerol (glycerin, glycerine)
Purity	Immunogen affinity purified
Clonality	Polyclonal
Isotype	IgG

Applications

The Abpromise guarantee

Our **Abpromise guarantee** covers the use of ab95993 in the following tested applications.

The application notes include recommended starting dilutions; optimal dilutions/concentrations should be determined by the end user.

Application	Abreviews	Notes
WB		1/500 - 1/3000. Predicted molecular weight: 108 kDa.
IP		Use at 10-1 µg/mg of lysate.
ICC/IF		1/100 - 1/200.

Target

Function

Functions in nuclear protein import as nuclear transport receptor. Serves as receptor for nuclear localization signals (NLS) in cargo substrates. Is thought to mediate docking of the importin/substrate complex to the nuclear pore complex (NPC) through binding to nucleoporin and the complex is subsequently translocated through the pore by an energy requiring, Ran-dependent mechanism. At the nucleoplasmic side of the NPC, Ran binds to the importin, the importin/substrate complex dissociates and importin is re-exported from the nucleus to the cytoplasm where GTP hydrolysis releases Ran. The directionality of nuclear import is thought to be conferred by an asymmetric distribution of the GTP- and GDP-bound forms of Ran between the cytoplasm and nucleus (By similarity). Mediates the nuclear import of UBC9, the RBM8A/MAGOH complex, PAX6 and probably other members of the paired homeobox family. Also mediates nuclear export of eIF-1A, and the cytoplasmic release of eIF-1A is triggered by the loading of import substrates onto IPO13.

Tissue specificity

Expressed in fetal brain, heart, intestine and kidney.

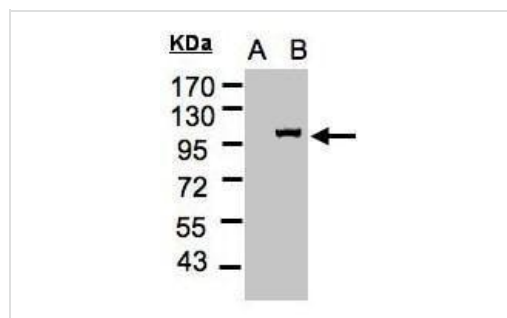
Sequence similarities

Belongs to the importin beta family.
Contains 14 HEAT repeats.
Contains 1 importin N-terminal domain.

Cellular localization

Cytoplasm. Nucleus.

Images



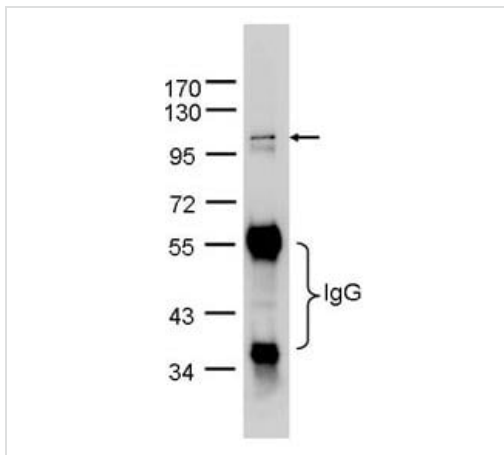
Western blot - Anti-Importin 13 antibody (ab95993)

All lanes : Anti-Importin 13 antibody (ab95993)

Lane 1 : Non-transfected lysate

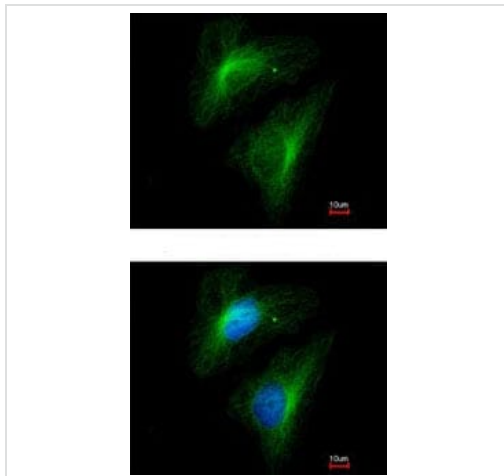
Lane 2 : IPO13 transfected lysate

Predicted band size: 108 kDa



Immunoprecipitation - Anti-Importin 13 antibody
(ab95993)

Importin 13 was immunoprecipitated from 1 mg of HeLa whole cell lysate using 10 µg of ab95993. The precipitated Importin 13 was detected with ab95993 at 1/1000 dilution.



Immunocytochemistry/ Immunofluorescence - Anti-Importin 13 antibody (ab95993)

Immunofluorescence analysis of paraformaldehyde-fixed HeLa cells, using ab95993 at 1/200 dilution. Lower image is merged with DNA probe.

Please note: All products are "FOR RESEARCH USE ONLY. NOT FOR USE IN DIAGNOSTIC PROCEDURES"

Our Abpromise to you: Quality guaranteed and expert technical support

- Replacement or refund for products not performing as stated on the datasheet
- Valid for 12 months from date of delivery
- Response to your inquiry within 24 hours
- We provide support in Chinese, English, French, German, Japanese and Spanish
- Extensive multi-media technical resources to help you
- We investigate all quality concerns to ensure our products perform to the highest standards

If the product does not perform as described on this datasheet, we will offer a refund or replacement. For full details of the Abpromise, please visit <https://www.abcam.com/abpromise> or contact our technical team.

Terms and conditions

- Guarantee only valid for products bought direct from Abcam or one of our authorized distributors