




Product datasheet

Anti-Indoleamine 2, 3-dioxygenase antibody ab134197

★★★★★ [3 Abreviews](#) [5 References](#) [3 Images](#)

Overview

Product name	Anti-Indoleamine 2, 3-dioxygenase antibody
Description	Goat polyclonal to Indoleamine 2, 3-dioxygenase
Host species	Goat
Tested applications	Suitable for: WB, IHC-P
Species reactivity	Reacts with: Human Predicted to work with: Mouse, Rat, Dog 
Immunogen	Synthetic peptide: CVLANWKKKDPNK , corresponding to internal sequence amino acids 129-141 of Human Indoleamine 2, 3-dioxygenase (NP_002155.1).  Run BLAST with  Run BLAST with
Positive control	Human colon tissue.
General notes	<p>The Life Science industry has been in the grips of a reproducibility crisis for a number of years. Abcam is leading the way in addressing this with our range of recombinant monoclonal antibodies and knockout edited cell lines for gold-standard validation. Please check that this product meets your needs before purchasing.</p> <p>If you have any questions, special requirements or concerns, please send us an inquiry and/or contact our Support team ahead of purchase. Recommended alternatives for this product can be found below, along with publications, customer reviews and Q&As</p>

Properties

Form	Liquid
Storage instructions	Shipped at 4°C. Upon delivery aliquot and store at -20°C. Avoid repeated freeze / thaw cycles.
Storage buffer	pH: 7.30 Preservative: 0.02% Sodium azide Constituents: 99% Tris buffered saline, 0.5% BSA
Purity	Immunogen affinity purified
Purification notes	ab134197 was purified from Goat serum by ammonium sulphate precipitation followed by antigen affinity chromatography using the immunizing peptide.

Clonality	Polyclonal
Isotype	IgG

Applications

The Abpromise guarantee Our **Abpromise guarantee** covers the use of ab134197 in the following tested applications.

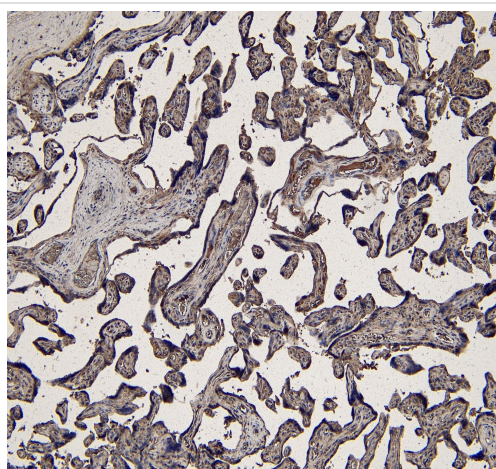
The application notes include recommended starting dilutions; optimal dilutions/concentrations should be determined by the end user.

Application	Abreviews	Notes
WB	★★★★★ (1)	Use a concentration of 0.5 - 1.5 µg/ml. A 1 hour primary incubation is recommended for this product. Approx 50kDa band observed in Human Lymph Node, Spleen and Placenta lysates (calculated MW of 45.3kDa according to NP_002155.1).
IHC-P		Use a concentration of 4 - 6 µg/ml. Perform heat mediated antigen retrieval with citrate buffer pH 6 before commencing with IHC staining protocol.

Target

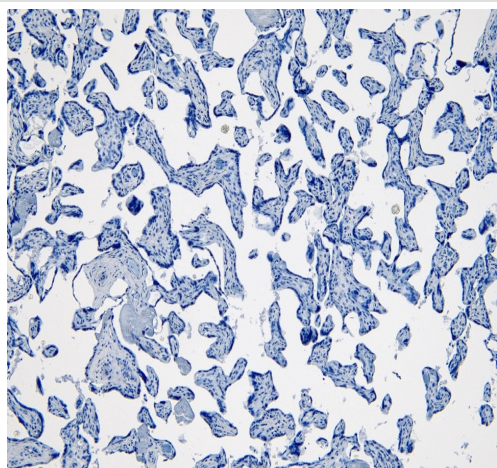
Function	Catalyzes the cleavage of the pyrrol ring of tryptophan and incorporates both atoms of a molecule of oxygen.
Pathway	Amino-acid degradation; L-tryptophan degradation via kynurenine pathway; L-kynurenine from L-tryptophan: step 1/2.
Sequence similarities	Belongs to the indoleamine 2,3-dioxygenase family.

Images



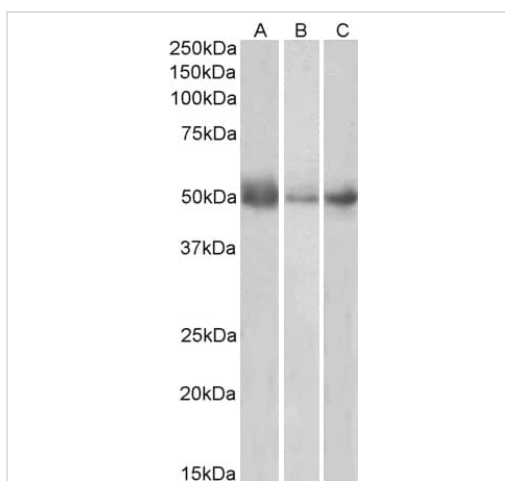
Immunohistochemical analysis of paraffin-embedded Human placenta tissue labelling Indoleamine 2, 3-dioxygenase with ab134197 at 6 µg/ml dilution. Heat induced antigen retrieval with citrate buffer pH 6.

Immunohistochemistry (Formalin/PFA-fixed paraffin-embedded sections) - Anti-Indoleamine 2, 3-dioxygenase antibody (ab134197)



Negative control: Immunohistochemical analysis of paraffin-embedded Human placenta tissue with no primary antibody.

Immunohistochemistry (Formalin/PFA-fixed paraffin-embedded sections) - Anti-Indoleamine 2, 3-dioxygenase antibody (ab134197)



All lanes : Anti-Indoleamine 2, 3-dioxygenase antibody (ab134197) at 0.5 µg/ml

Lane 1 : Human lymph node lysate

Lane 2 : Spleen lysate

Lane 3 : Placenta lysate

Lysates/proteins at 35 µg per lane.

Western blot - Anti-Indoleamine 2, 3-dioxygenase antibody (ab134197)

Please note: All products are "FOR RESEARCH USE ONLY. NOT FOR USE IN DIAGNOSTIC PROCEDURES"

Our Abpromise to you: Quality guaranteed and expert technical support

- Replacement or refund for products not performing as stated on the datasheet
- Valid for 12 months from date of delivery
- Response to your inquiry within 24 hours
- We provide support in Chinese, English, French, German, Japanese and Spanish
- Extensive multi-media technical resources to help you
- We investigate all quality concerns to ensure our products perform to the highest standards

If the product does not perform as described on this datasheet, we will offer a refund or replacement. For full details of the Abpromise,

please visit <https://www.abcam.com/abpromise> or contact our technical team.

Terms and conditions

- Guarantee only valid for products bought direct from Abcam or one of our authorized distributors