

## Product datasheet

# Anti-Indoleamine 2, 3-dioxygenase antibody [BLR040F] - BSA free ab272090

Recombinant

[2 Images](#)

### Overview

---

<b>Product name</b>	Anti-Indoleamine 2, 3-dioxygenase antibody [BLR040F] - BSA free
<b>Description</b>	Rabbit monoclonal [BLR040F] to Indoleamine 2, 3-dioxygenase - BSA free
<b>Host species</b>	Rabbit
<b>Tested applications</b>	<b>Suitable for:</b> WB, IP
<b>Species reactivity</b>	<b>Reacts with:</b> Human
<b>Immunogen</b>	Recombinant full length protein corresponding to Human Indoleamine 2, 3-dioxygenase. Database link: <a href="#">P14902</a>
<b>General notes</b>	ab272090 is the BSA-free version of <a href="#">ab243896</a> .  This product is sold under License from Bethyl Laboratories, Inc.

### Properties

---

<b>Form</b>	Liquid
<b>Storage instructions</b>	Shipped at 4°C. Store at +4°C short term (1-2 weeks). Upon delivery aliquot. Store at -20°C long term. Avoid freeze / thaw cycle.
<b>Storage buffer</b>	pH: 8.20 Preservative: 0.09% Sodium azide Constituent: 98% Borate buffered saline
<b>Purification notes</b>	Recombinant antibody was purified from cell culture supernatant.
<b>Clonality</b>	Monoclonal
<b>Clone number</b>	BLR040F
<b>Isotype</b>	IgG

### Applications

---

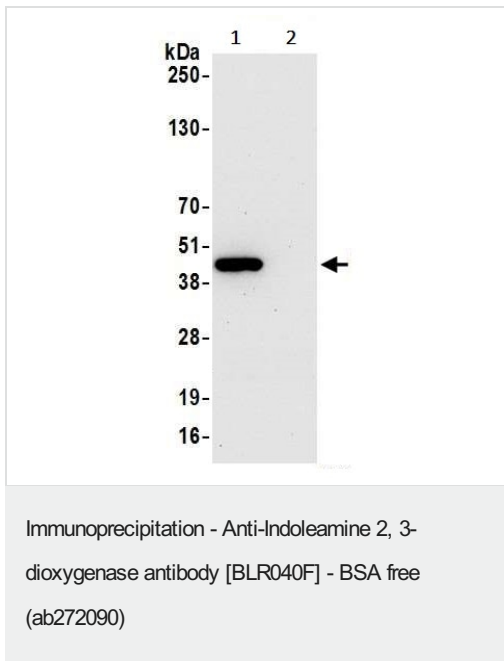
**The Abpromise guarantee** Our **Abpromise guarantee** covers the use of ab272090 in the following tested applications.  
The application notes include recommended starting dilutions; optimal dilutions/concentrations should be determined by the end user.

Application	Abreviews	Notes
WB		Use at an assay dependent concentration.
IP		Use at an assay dependent concentration.

## Target

<b>Function</b>	Catalyzes the cleavage of the pyrrol ring of tryptophan and incorporates both atoms of a molecule of oxygen.
<b>Pathway</b>	Amino-acid degradation; L-tryptophan degradation via kynurenine pathway; L-kynurenine from L-tryptophan: step 1/2.
<b>Sequence similarities</b>	Belongs to the indoleamine 2,3-dioxygenase family.

## Images



Indoleamine 2,3-Dioxygenase was immunoprecipitated from 1.0 mg HeLa whole cell lysate with [ab243896](#) at 15 µl per reaction. Western blot was performed on the immunoprecipitate using [ab243896](#) at 1/1000 dilution.

Lane 1: [ab243896](#) IP in HeLa whole cell lysate.

Lane 2: Control IgG in HeLa whole cell lysate.

Detection: Chemiluminescence with an exposure time of 30 seconds.

This data was developed using the same antibody clone in a different buffer formulation containing Borate buffered saline, BSA, glycerol and sodium azide ([ab243896](#)).

### Why choose a recombinant antibody?



**Research with confidence**  
Consistent and reproducible results



**Long-term and scalable supply**  
Recombinant technology



**Success from the first experiment**  
Confirmed specificity



**Ethical standards compliant**  
Animal-free production

Anti-Indoleamine 2, 3-dioxygenase antibody  
[BLR040F] - BSA free (ab272090)

**Please note:** All products are "FOR RESEARCH USE ONLY. NOT FOR USE IN DIAGNOSTIC PROCEDURES"

### Our Abpromise to you: Quality guaranteed and expert technical support

---

- Replacement or refund for products not performing as stated on the datasheet
- Valid for 12 months from date of delivery
- Response to your inquiry within 24 hours
- We provide support in Chinese, English, French, German, Japanese and Spanish
- Extensive multi-media technical resources to help you
- We investigate all quality concerns to ensure our products perform to the highest standards

If the product does not perform as described on this datasheet, we will offer a refund or replacement. For full details of the Abpromise, please visit <https://www.abcam.com/abpromise> or contact our technical team.

### Terms and conditions

---

- Guarantee only valid for products bought direct from Abcam or one of our authorized distributors