


# Anti-Inhibin alpha antibody [EPY2782] - BSA and Azide free ab226844

Recombinant RabMAb

2 Images

### Overview

Product name	Anti-Inhibin alpha antibody [EPY2782] - BSA and Azide free
Description	Rabbit monoclonal [EPY2782] to Inhibin alpha - BSA and Azide free
Host species	Rabbit
Specificity	Note: 20/23 kDa bands consist of the mature alpha chain. 50/53 kDa bands are the entire proprotein.
Tested applications	<b>Suitable for:</b> WB
Species reactivity	<b>Reacts with:</b> Human <b>Predicted to work with:</b> Mouse, Rat 
Immunogen	Synthetic peptide. This information is proprietary to Abcam and/or its suppliers.
Positive control	WB: Human adrenal gland and placenta lysate; HeLa and LNCaP cell lysates.
General notes	<p>ab226844 is the carrier-free version of <a href="#">ab81322</a>.</p> <p>Our <b>carrier-free</b> antibodies are typically supplied in a PBS-only formulation, purified and free of BSA, sodium azide and glycerol. The carrier-free buffer and high concentration allow for increased conjugation efficiency.</p> <p>This conjugation-ready format is designed for use with fluorochromes, metal isotopes, oligonucleotides, and enzymes, which makes them ideal for antibody labelling, functional and cell-based assays, flow-based assays (e.g. mass cytometry) and Multiplex Imaging applications.</p> <p>Use our <b>conjugation kits</b> for antibody conjugates that are ready-to-use in as little as 20 minutes with &lt;1 minute hands-on-time and 100% antibody recovery: available for fluorescent dyes, HRP, biotin and gold.</p> <p>This product is compatible with the Maxpar<sup>®</sup> Antibody Labeling Kit from Fluidigm, without the need for antibody preparation. Maxpar<sup>®</sup> is a trademark of Fluidigm Canada Inc.</p> <p>This product is a recombinant monoclonal antibody, which offers several advantages including:</p> <ul style="list-style-type: none"> <li>- High batch-to-batch consistency and reproducibility</li> <li>- Improved sensitivity and specificity</li> <li>- Long-term security of supply</li> <li>- Animal-free production</li> </ul> <p>For more information <a href="#">see here</a>.</p>

Our RabMAb<sup>®</sup> technology is a patented hybridoma-based technology for making rabbit monoclonal antibodies. For details on our patents, please refer to [RabMAb<sup>®</sup> patents](#).

## Properties

<b>Form</b>	Liquid
<b>Storage instructions</b>	Shipped at 4°C. Store at +4°C. Do Not Freeze.
<b>Storage buffer</b>	pH: 7.2 Constituent: PBS
<b>Carrier free</b>	Yes
<b>Purity</b>	Protein A purified
<b>Clonality</b>	Monoclonal
<b>Clone number</b>	EPY2782
<b>Isotype</b>	IgG

## Applications

**The Abpromise guarantee** Our [Abpromise guarantee](#) covers the use of ab226844 in the following tested applications. The application notes include recommended starting dilutions; optimal dilutions/concentrations should be determined by the end user.

Application	Abreviews	Notes
<b>WB</b>		Use at an assay dependent concentration. Predicted molecular weight: 40 kDa.

## Target

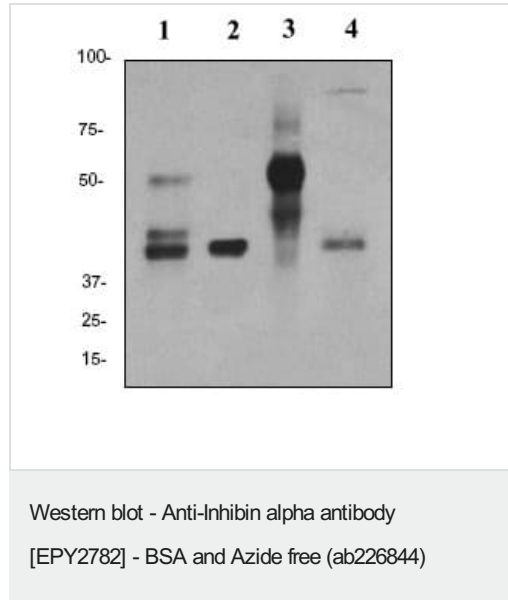
<b>Function</b>	Inhibins and activins inhibit and activate, respectively, the secretion of follitropin by the pituitary gland. Inhibins/activins are involved in regulating a number of diverse functions such as hypothalamic and pituitary hormone secretion, gonadal hormone secretion, germ cell development and maturation, erythroid differentiation, insulin secretion, nerve cell survival, embryonic axial development or bone growth, depending on their subunit composition. Inhibins appear to oppose the functions of activins.
<b>Tissue specificity</b>	Originally found in ovary (granulosa cells) and testis (Sertoli cells), but widely distributed in many tissues including brain and placenta. In adrenal cortex expression is limited to the zona reticularis and the innermost zona fasciculata in the normal gland, extending centripetally into the zona fasciculata in hyperplasia. Also found in adrenocortical tumors. Also expressed in prostate epithelium of benign prostatic hyperplasia, in regions of basal cell hyperplasia and in nonmalignant regions of high grade prostate cancer. Only circulating inhibin B is found in male, whereas circulating inhibins A and B are found in female.
<b>Sequence similarities</b>	Belongs to the TGF-beta family.
<b>Post-translational modifications</b>	Proteolytic processing yields a number of bioactive forms. The 20/23 kDa forms consist solely of the mature alpha chain, the 26/29 kDa forms consist of the most N-terminal propeptide linked through a disulfide bond to the mature alpha chain, the 50/53 kDa forms encompass the entire

proprotein. Each type can be furthermore either mono- or diglycosylated, causing the mass difference.

## Cellular localization

Secreted.

## Images



**All lanes :** Anti-Inhibin alpha antibody [EPY2782] ([ab81322](#)) at 1/2000 dilution

**Lane 1 :** Human adrenal gland lysate

**Lane 2 :** HeLa (human epithelial cell line from cervix adenocarcinoma) cell lysate

**Lane 3 :** Human placenta lysate

**Lane 4 :** LNCaP (Human prostate cancer cell line) cell lysate

### Secondary

**All lanes :** HRP goat anti rabbit at 1/2000 dilution

**Predicted band size:** 40 kDa

Note: the 50 kDa band corresponds to the entire proprotein.

This data was developed using the same antibody clone in a different buffer formulation containing PBS, BSA, glycerol, and sodium azide ([ab81322](#)).

Why choose a recombinant antibody?

**Research with confidence**  
Consistent and reproducible results

**Long-term and scalable supply**  
Recombinant technology

**Success from the first experiment**  
Confirmed specificity

**Ethical standards compliant**  
Animal-free production

Anti-Inhibin alpha antibody [EPY2782] - BSA and Azide free (ab226844)

**Please note:** All products are "FOR RESEARCH USE ONLY. NOT FOR USE IN DIAGNOSTIC PROCEDURES"

### **Our Abpromise to you: Quality guaranteed and expert technical support**

---

- Replacement or refund for products not performing as stated on the datasheet
- Valid for 12 months from date of delivery
- Response to your inquiry within 24 hours
  
- We provide support in Chinese, English, French, German, Japanese and Spanish
- Extensive multi-media technical resources to help you
- We investigate all quality concerns to ensure our products perform to the highest standards

If the product does not perform as described on this datasheet, we will offer a refund or replacement. For full details of the Abpromise, please visit <https://www.abcam.com/abpromise> or contact our technical team.

### **Terms and conditions**

---

- Guarantee only valid for products bought direct from Abcam or one of our authorized distributors