

## Product datasheet

### Anti-Inhibin beta B antibody [EPR2788(2)] $\alpha$ ab128944

Recombinant RabMAb

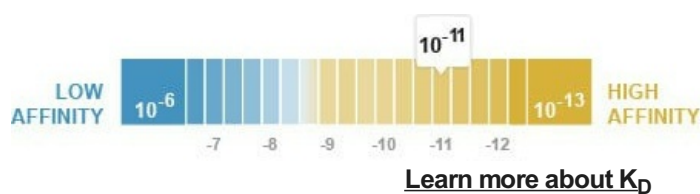
4 Images

#### Overview

Product name	Anti-Inhibin beta B antibody [EPR2788(2)]
Description	Rabbit monoclonal [EPR2788(2)] to Inhibin beta B
Host species	Rabbit
Tested applications	<b>Suitable for:</b> WB <b>Unsuitable for:</b> IHC-P or IP
Species reactivity	<b>Reacts with:</b> Mouse, Rat, Human
Immunogen	Synthetic peptide corresponding to Human Inhibin beta B aa 350 to the C-terminus. Database link: <b>P09529</b> (Peptide available as <b>ab174743</b> )
Positive control	Mouse brain and Rat brain lysates; Human Inhibin beta B recombinant protein (mature form: 17 kDa)
General notes	This product is a recombinant monoclonal antibody, which offers several advantages including: <ul style="list-style-type: none"> <li>- High batch-to-batch consistency and reproducibility</li> <li>- Improved sensitivity and specificity</li> <li>- Long-term security of supply</li> <li>- Animal-free production</li> </ul> For more information <a href="#">see here</a> . Our RabMAb <sup>®</sup> technology is a patented hybridoma-based technology for making rabbit monoclonal antibodies. For details on our patents, please refer to <a href="#">RabMAb<sup>®</sup> patents</a> .

#### Properties

Form	Liquid
Storage instructions	Shipped at 4°C. Store at -20°C. Stable for 12 months at -20°C.
Dissociation constant ( $K_D$ )	$K_D = 2.78 \times 10^{-11}$ M



<b>Storage buffer</b>	pH: 7.20 Preservative: 0.01% Sodium azide Constituents: 9% PBS, 40% Glycerol (glycerin, glycerine), 0.05% BSA, 50% Tissue culture supernatant
<b>Purity</b>	Protein A purified
<b>Clonality</b>	Monoclonal
<b>Clone number</b>	EPR2788(2)
<b>Isotype</b>	IgG

## Applications

**The Abpromise guarantee** Our **Abpromise guarantee** covers the use of ab128944 in the following tested applications. The application notes include recommended starting dilutions; optimal dilutions/concentrations should be determined by the end user.

Application	Abreviews	Notes
<b>WB</b>		1/1000 - 1/10000. Detects a band of approximately 52, 17 kDa (predicted molecular weight: 45 kDa).

**Application notes** Is unsuitable for IHC-P or IP.

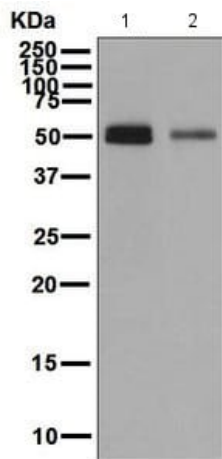
## Target

**Function** Inhibins and activins inhibit and activate, respectively, the secretion of follitropin by the pituitary gland. Inhibins/activins are involved in regulating a number of diverse functions such as hypothalamic and pituitary hormone secretion, gonadal hormone secretion, germ cell development and maturation, erythroid differentiation, insulin secretion, nerve cell survival, embryonic axial development or bone growth, depending on their subunit composition. Inhibins appear to oppose the functions of activins.

**Sequence similarities** Belongs to the TGF-beta family.

**Cellular localization** Secreted.

## Images



Western blot - Anti-Inhibin beta B antibody  
[EPR2788(2)] (ab128944)

**All lanes :** Anti-Inhibin beta B antibody [EPR2788(2)] (ab128944)  
at 1/1000 dilution

**Lane 1 :** Mouse brain lysate

**Lane 2 :** Rat brain lysate

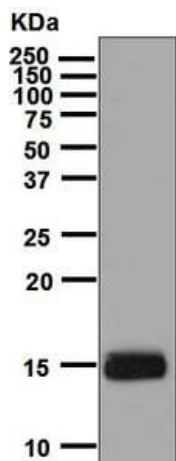
Lysates/proteins at 10 µg per lane.

### Secondary

**All lanes :** HRP labelled goat anti-rabbit at 1/2000 dilution

**Predicted band size:** 45 kDa

**Observed band size:** 52 kDa



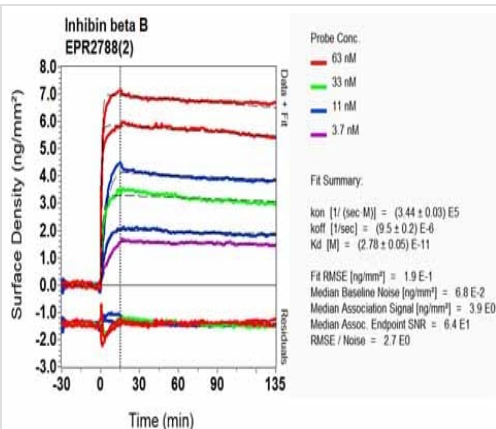
Western blot - Anti-Inhibin beta B antibody  
[EPR2788(2)] (ab128944)

Anti-Inhibin beta B antibody [EPR2788(2)] (ab128944) at 1/1000  
dilution + Human Inhibin beta B recombinant protein (mature form:  
17 kDa) (10 ng)

### Secondary

HRP labelled goat anti-rabbit at 1/2000 dilution

**Predicted band size:** 45 kDa



OIR-D Scanning - Anti-Inhibin beta B antibody  
[EPR2788(2)] (ab128944)

Equilibrium dissociation constant ( $K_D$ )

Learn more about  $K_D$

[Click here to learn more about  \$K\_D\$](#)

### Why choose a recombinant antibody?



**Research with confidence**  
Consistent and reproducible results



**Long-term and scalable supply**  
Recombinant technology



**Success from the first experiment**  
Confirmed specificity



**Ethical standards compliant**  
Animal-free production

Anti-Inhibin beta B antibody [EPR2788(2)]  
(ab128944)

**Please note:** All products are "FOR RESEARCH USE ONLY. NOT FOR USE IN DIAGNOSTIC PROCEDURES"

### Our Abpromise to you: Quality guaranteed and expert technical support

---

- Replacement or refund for products not performing as stated on the datasheet
- Valid for 12 months from date of delivery
- Response to your inquiry within 24 hours
- We provide support in Chinese, English, French, German, Japanese and Spanish
- Extensive multi-media technical resources to help you
- We investigate all quality concerns to ensure our products perform to the highest standards

If the product does not perform as described on this datasheet, we will offer a refund or replacement. For full details of the Abpromise, please visit <https://www.abcam.com/abpromise> or contact our technical team.

### Terms and conditions

---

- Guarantee only valid for products bought direct from Abcam or one of our authorized distributors