

Product datasheet

Anti-INPP4B antibody [EPR3108Y] ab81269

Recombinant RabMAb

[1 Abreviews](#) [12 References](#) [6 Images](#)

Overview

Product name	Anti-INPP4B antibody [EPR3108Y]
Description	Rabbit monoclonal [EPR3108Y] to INPP4B
Host species	Rabbit
Tested applications	Suitable for: Flow Cyt (Intra), ICC/IF, WB, IHC-P Unsuitable for: IP
Species reactivity	Reacts with: Human
Immunogen	Synthetic peptide within Human INPP4B aa 1-100 (N terminal). The exact sequence is proprietary. Database link: O15327
Positive control	WB: MCF7 and A-204 whole cell lysate; Human skeletal muscle lysate Flow Cyt (intra): MCF7 cells; IHC: human lung carcinoma tissue, human breast carcinoma tissue; ICC: MCF7 cells;
General notes	This product is a recombinant monoclonal antibody, which offers several advantages including: <ul style="list-style-type: none"> - High batch-to-batch consistency and reproducibility - Improved sensitivity and specificity - Long-term security of supply - Animal-free production For more information see here . Our RabMAb [®] technology is a patented hybridoma-based technology for making rabbit monoclonal antibodies. For details on our patents, please refer to RabMAb[®] patents .

Properties

Form	Liquid
Storage instructions	Shipped at 4°C. Store at +4°C short term (1-2 weeks). Upon delivery aliquot. Store at -20°C long term. Avoid freeze / thaw cycle.
Storage buffer	pH: 7.20 Preservative: 0.01% Sodium azide Constituents: 59% PBS, 40% Glycerol (glycerin, glycerine), 0.05% BSA
Purity	Protein A purified
Clonality	Monoclonal

Clone number	EPR3108Y
Isotype	IgG

Applications

The Abpromise guarantee Our **Abpromise guarantee** covers the use of ab81269 in the following tested applications. The application notes include recommended starting dilutions; optimal dilutions/concentrations should be determined by the end user.

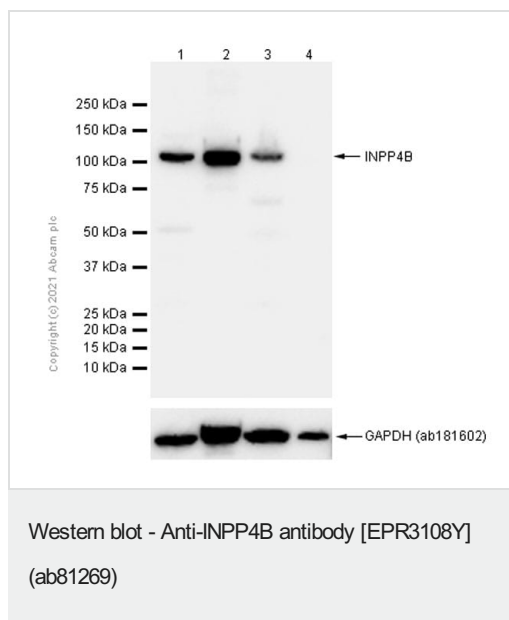
Application	Abreviews	Notes
Flow Cyt (Intra)		1/100. ab172730 - Rabbit monoclonal IgG, is suitable for use as an isotype control with this antibody. Unpurified version to be used at 1/100 dilution.
ICC/IF		1/50.
WB		1/1000 - 1/5000. Detects a band of approximately 107 kDa (predicted molecular weight: 107 kDa).
IHC-P		1/50. Perform heat mediated antigen retrieval by microwaving the slides in Tris-EDTA buffer pH 9 at 650 W for 30 minutes.

Application notes Is unsuitable for IP.

Target

Function	Catalyzes the hydrolysis of the 4-position phosphate of phosphatidylinositol 3,4-bisphosphate, inositol 1,3,4-trisphosphate and inositol 1,4-bisphosphate.
Tissue specificity	Widely expressed with highest levels occurring in the skeletal muscle and heart.
Pathway	Signal transduction; phosphatidylinositol signaling pathway.
Sequence similarities	Belongs to the inositol-3,4-bisphosphate 4-phosphatase family. Contains 1 C2 domain.

Images



All lanes : Anti-INPP4B antibody [EPR3108Y] (ab81269) at 1/1000 dilution (Purified)

Lane 1 : MCF7 (Human breast adenocarcinoma epithelial cell) whole cell lysate

Lane 2 : Human skeletal muscle lysate

Lane 3 : A-204 (Human muscle rhabdomyosarcoma) whole cell lysate

Lane 4 : PANC-1 (Human pancreatic epithelioid carcinoma epithelial cell) whole cell lysate

Lysates/proteins at 20 µg per lane.

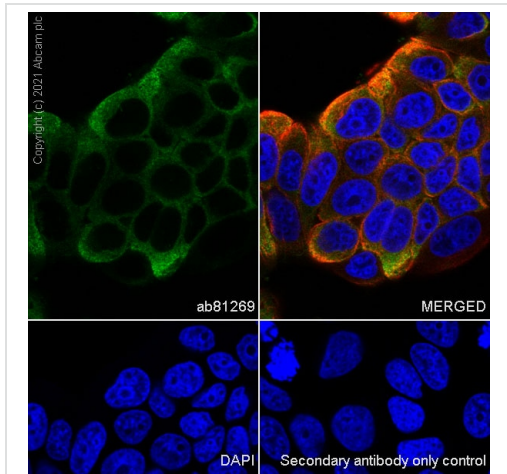
Secondary

All lanes : Goat Anti-Rabbit IgG (HRP) with minimal cross-reactivity with human IgG at 1/2000 dilution

Predicted band size: 107 kDa

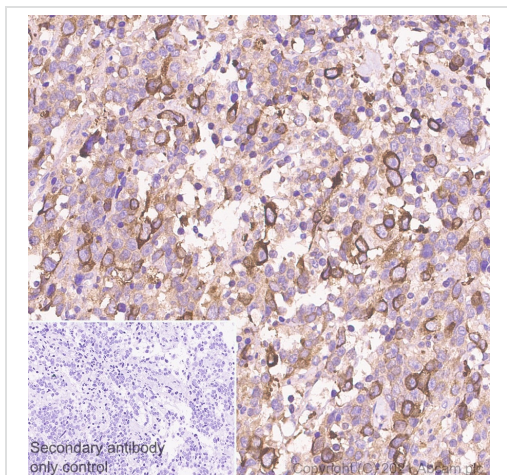
Observed band size: 107 kDa

INPP4B is lowly expressed in PANC-1 (PMID: 29952716)



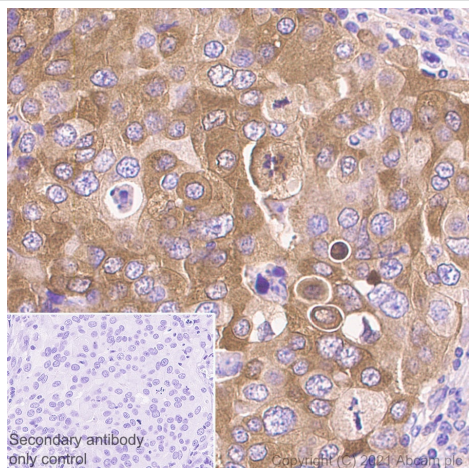
Immunocytochemistry/ Immunofluorescence - Anti-INPP4B antibody [EPR3108Y] (ab81269)

Immunocytochemistry analysis of MCF7 (Human breast adenocarcinoma epithelial cell) cells labeling INPP4B with Purified ab81269 at 1:50 dilution (2.4 µg/ml). Cells were fixed in 4% Paraformaldehyde and permeabilized with 0.1% tritonX-100. Cells were counterstained with Ab195889 Anti-alpha Tubulin antibody [DM1A] - Microtubule Marker (Alexa Fluor® 594) 1:200 (2.5 µg/ml). Goat anti rabbit IgG (Alexa Fluor® 488, **ab150077**) was used as the secondary antibody at 1:1000 (2 µg/ml) dilution. DAPI (blue) was used as nuclear counterstain. PBS instead of the primary antibody was used as the secondary antibody only control.



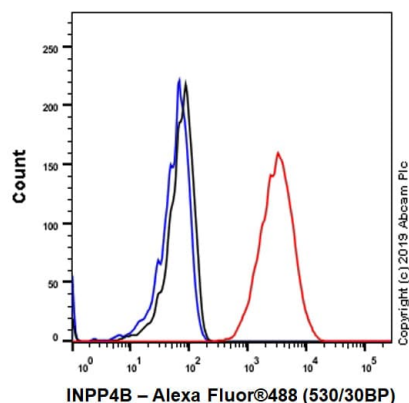
Immunohistochemistry (Formalin/PFA-fixed paraffin-embedded sections) - Anti-INPP4B antibody [EPR3108Y] (ab81269)

Immunohistochemistry (Formalin/PFA-fixed paraffin-embedded sections) analysis of human lung carcinoma tissue sections labeling INPP4B with Purified ab81269 at 1:50 dilution (2.36 µg/ml). Heat mediated antigen retrieval was performed using Heat mediated antigen retrieval using Bond™ Epitope Retrieval Solution 2 (pH 9.0) . Tissue was counterstained with Hematoxylin. Rabbit specific IHC polymer detection kit HRP/DAB (**ab209101**) secondary antibody was used. PBS instead of the primary antibody was used as the negative control.



Immunohistochemistry (Formalin/PFA-fixed paraffin-embedded sections) - Anti-INPP4B antibody [EPR3108Y] (ab81269)

Immunohistochemistry (Formalin/PFA-fixed paraffin-embedded sections) analysis of human breast carcinoma tissue sections labeling INPP4B with Purified ab81269 at 1:50 dilution (2.36 µg/ml). Heat mediated antigen retrieval was performed using Heat mediated antigen retrieval using Bond™ Epitope Retrieval Solution 2 (pH 9.0) . Tissue was counterstained with Hematoxylin. Rabbit specific IHC polymer detection kit HRP/DAB (**ab209101**) secondary antibody was used. PBS instead of the primary antibody was used as the negative control.



Flow Cytometry (Intracellular) - Anti-INPP4B antibody [EPR3108Y] (ab81269)

Intracellular Flow Cytometry analysis of MCF7 (Human breast adenocarcinoma epithelial cell) cells labeling INPP4B with purified ab81269 at 1/100 dilution (10 µg/mL) (Red). Cells were fixed with 4% Paraformaldehyde and permeabilised with 90% Methanol. A Goat anti rabbit IgG (Alexa Fluor® 488, **ab150077**) secondary antibody was used at 1/2000. Isotype control - Rabbit monoclonal IgG (Black). Unlabeled control - Cells without incubation with primary antibody and secondary antibody (Blue).

Why choose a recombinant antibody?



Research with confidence
Consistent and reproducible results



Long-term and scalable supply
Recombinant technology



Success from the first experiment
Confirmed specificity



Ethical standards compliant
Animal-free production

Anti-INPP4B antibody [EPR3108Y] (ab81269)

Please note: All products are "FOR RESEARCH USE ONLY. NOT FOR USE IN DIAGNOSTIC PROCEDURES"

Our Abpromise to you: Quality guaranteed and expert technical support

- Replacement or refund for products not performing as stated on the datasheet
- Valid for 12 months from date of delivery
- Response to your inquiry within 24 hours

- We provide support in Chinese, English, French, German, Japanese and Spanish
- Extensive multi-media technical resources to help you
- We investigate all quality concerns to ensure our products perform to the highest standards

If the product does not perform as described on this datasheet, we will offer a refund or replacement. For full details of the Abpromise, please visit <https://www.abcam.com/abpromise> or contact our technical team.

Terms and conditions

- Guarantee only valid for products bought direct from Abcam or one of our authorized distributors