

Product datasheet

Anti-Integrin alpha 3 antibody [F35 177-1] ab20140

★★★★★ [1 Abreviews](#) [1 References](#) [1 Image](#)

Overview

Product name	Anti-Integrin alpha 3 antibody [F35 177-1]
Description	Mouse monoclonal [F35 177-1] to Integrin alpha 3
Host species	Mouse
Tested applications	Suitable for: IHC-Fr, IHC-FoFr
Species reactivity	Reacts with: Human
Immunogen	Tissue, cells or virus corresponding to Human Integrin alpha 3. MTSV1-7 HYE - human breast epithelial cells
General notes	<p>Fusion Partner: NS2</p> <p>The Life Science industry has been in the grips of a reproducibility crisis for a number of years. Abcam is leading the way in addressing this with our range of recombinant monoclonal antibodies and knockout edited cell lines for gold-standard validation. Please check that this product meets your needs before purchasing.</p> <p>If you have any questions, special requirements or concerns, please send us an inquiry and/or contact our Support team ahead of purchase. Recommended alternatives for this product can be found below, along with publications, customer reviews and Q&As</p>

Properties

Form	Liquid
Storage instructions	Shipped at 4°C. Store at +4°C short term (1-2 weeks). Upon delivery aliquot. Store at -20°C or -80°C. Avoid freeze / thaw cycle.
Storage buffer	Preservative: 0.02% Sodium azide Constituent: 99.98% PBS
Purity	Protein A/G purified
Clonality	Monoclonal
Clone number	F35 177-1
Isotype	IgG1
Light chain type	unknown

Applications

The Abpromise guarantee

Our **Abpromise guarantee** covers the use of ab20140 in the following tested applications.

The application notes include recommended starting dilutions; optimal dilutions/concentrations should be determined by the end user.

Application	Abreviews	Notes
IHC-Fr	★★★★★ (1)	Use at an assay dependent concentration. Fix with acetone.
IHC-FoFr		Use at an assay dependent concentration.

Target

Function

Integrin alpha-3/beta-1 is a receptor for fibronectin, laminin, collagen, epiligrin, thrombospondin and CSPG4. Alpha-3/beta-1 may mediate with LGALS3 the stimulation by CSPG4 of endothelial cells migration.

Tissue specificity

Isoform alpha-3A is widely expressed. Isoform alpha-3B is expressed in brain and heart. In brain, both isoforms are exclusively expressed on vascular smooth muscle cells, whereas in heart isoform alpha-3A is strongly expressed on vascular smooth muscle cells, isoform alpha-3B is detected only on endothelial vein cells.

Sequence similarities

Belongs to the integrin alpha chain family.
Contains 7 FG-GAP repeats.

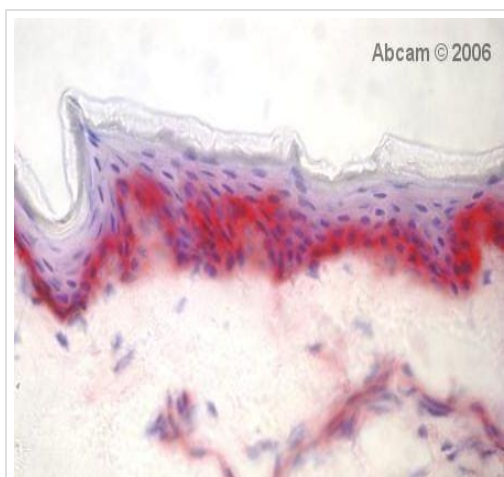
Post-translational modifications

Isoform alpha-3A, but not isoform alpha-3B, is phosphorylated on serine residues. Phosphorylation increases after phorbol 12-myristate 13-acetate stimulation. Isoform alpha-3A is phosphorylated on Tyr-1051.

Cellular localization

Membrane.

Images



Immunohistochemistry (Frozen sections) - Anti-Integrin alpha 3 antibody [F35 177-1] (ab20140)

Immunohistochemistry (Frozen sections) analysis of human skin tissue sections labeling Integrin alpha 3 with ab20140 at 1/1000 dilution. An undiluted goat anti-mouse polyclonal alkaline phosphatase conjugate was used as the secondary antibody.

Our Abpromise to you: Quality guaranteed and expert technical support

- Replacement or refund for products not performing as stated on the datasheet
- Valid for 12 months from date of delivery
- Response to your inquiry within 24 hours

- We provide support in Chinese, English, French, German, Japanese and Spanish
- Extensive multi-media technical resources to help you
- We investigate all quality concerns to ensure our products perform to the highest standards

If the product does not perform as described on this datasheet, we will offer a refund or replacement. For full details of the Abpromise, please visit <https://www.abcam.com/abpromise> or contact our technical team.

Terms and conditions

- Guarantee only valid for products bought direct from Abcam or one of our authorized distributors