

Product datasheet

Anti-Integrin alpha 5 + beta 1 antibody [M200 (Volociximab)] - Rabbit IgG (Chimeric) ab275977

Recombinant

3 Images

Overview

Product name	Anti-Integrin alpha 5 + beta 1 antibody [M200 (Volociximab)] - Rabbit IgG (Chimeric)
Description	Rabbit monoclonal [M200 (Volociximab)] to Integrin alpha 5 + beta 1 - Chimeric
Host species	Rabbit
Specificity	The antibody binds to human $\alpha 5 \beta 1$ integrin with a Kd of 0.367 nM (determined by Biacore), an EC50 of 0.2 nM and an IC50 of 2.3 nM.
Tested applications	Suitable for: ICC/IF, Flow Cyt
Species reactivity	Reacts with: Human
Immunogen	Fusion protein corresponding to Human Integrin alpha 5 + beta 1. Heterodimeric $\alpha 5 \beta 1$ Fc fusion protein Database link: P08648
Positive control	ICC: HeLa cells. Flow cyt: PBMC cells.
General notes	This rabbit monoclonal chimeric antibody was made using the variable domain sequences of the original Human IgG4 format, for improved compatibility with existing reagents, assays and techniques.

Properties

Form	Liquid
Storage instructions	Shipped at 4°C. Store at +4°C short term (1-2 weeks). Upon delivery aliquot. Store at -20°C. Avoid freeze / thaw cycle.
Storage buffer	Preservative: 0.02% Proclin 300 Constituent: 99.98% PBS
Purity	Protein A purified
Clonality	Monoclonal
Clone number	M200 (Volociximab)
Isotype	IgG
Light chain type	kappa

Applications

The Abpromise guarantee

Our **Abpromise guarantee** covers the use of ab275977 in the following tested applications.

The application notes include recommended starting dilutions; optimal dilutions/concentrations should be determined by the end user.

Application	Abreviews	Notes
ICC/IF		Use a concentration of 10 µg/ml.
Flow Cyt		Use a concentration of 10 µg/ml.

Target

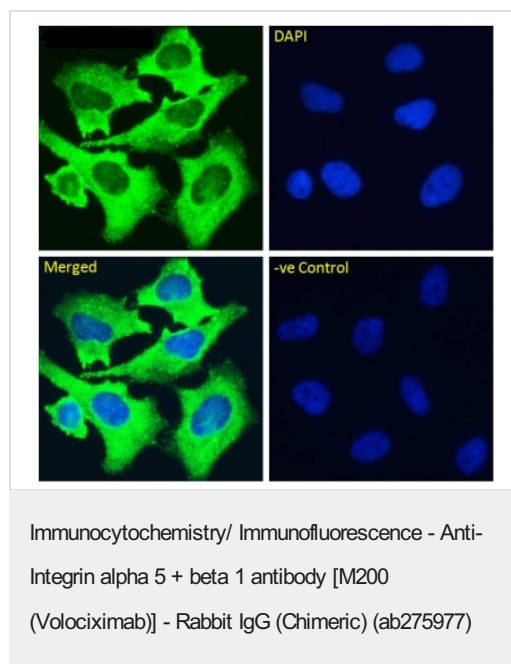
Relevance

Integrins are heterodimeric proteins made up of alpha and beta subunits. At least 18 alpha and 8 beta subunits have been described in mammals. Integrin family members are membrane receptors involved in cell adhesion and recognition in a variety of processes including embryogenesis, hemostasis, tissue repair, immune response and metastatic diffusion of tumor cells. Integrin alpha 5 belongs to the integrin alpha chain family. It contains seven FG-GAP repeats. Integrin beta 1 belongs to the integrin beta chain family. It contains one VWFA domain. Integrin alpha-5/beta-1 is a receptor for fibronectin and fibrinogen. It recognizes the sequence R-G-D in its ligands. In case of HIV-1 infection, the interaction with extracellular viral Tat protein seems to enhance angiogenesis in Kaposi's sarcoma lesions.

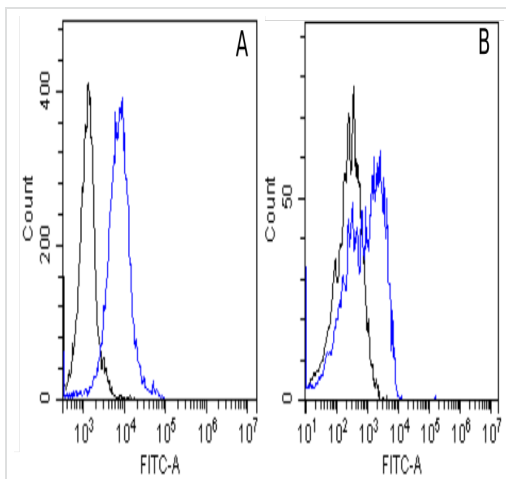
Cellular localization

Integrin alpha 5: Membrane; Single-pass type I membrane protein. Integrin beta 1: Cell membrane; Single-pass type I membrane protein. Melanosome.

Images



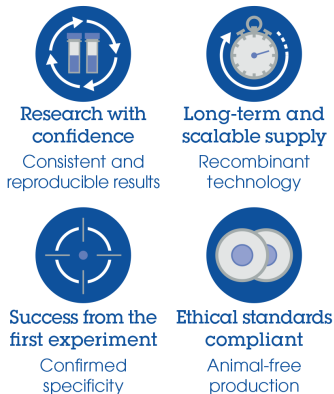
Immunofluorescence analysis of paraformaldehyde fixed HeLa (human epithelial cell line from cervix adenocarcinoma) cells permeabilized with 0.15% Triton and labeled Integrin alpha 5 + beta 1 with ab275977 at 10 µg/ml for 1h followed by Alexa Fluor®488 secondary antibody (1 µg/ml), showing cytoplasmic and membrane staining. The nuclear stain is DAPI (blue). Panels show from left-right, top-bottom ab275977, DAPI, merged channels and a negative control. The negative control was stained with unimmunized rabbit IgG followed by Alexa Fluor®488 secondary antibody.



PBMC's (A) and U93 cells (B) were stained with unimmunized rabbit IgG antibody (black line) or ab275977 (blue line) at a concentration of 10 µg/ml for 30 mins at RT. After washing, bound antibody was detected using anti-rabbit IgG JK (FITC-conjugate) antibody at 2 µg/ml and cells analyzed on a FACSCanto flow-cytometer.

Flow Cytometry - Anti-Integrin alpha 5 + beta 1 antibody [M200 (Volociximab)] - Rabbit IgG (Chimeric) (ab275977)

Why choose a recombinant antibody?



Anti-Integrin alpha 5 + beta 1 antibody [M200 (Volociximab)] - Rabbit IgG (Chimeric) (ab275977)

Please note: All products are "FOR RESEARCH USE ONLY. NOT FOR USE IN DIAGNOSTIC PROCEDURES"

Our Abpromise to you: Quality guaranteed and expert technical support

- Replacement or refund for products not performing as stated on the datasheet
- Valid for 12 months from date of delivery
- Response to your inquiry within 24 hours
- We provide support in Chinese, English, French, German, Japanese and Spanish
- Extensive multi-media technical resources to help you
- We investigate all quality concerns to ensure our products perform to the highest standards

If the product does not perform as described on this datasheet, we will offer a refund or replacement. For full details of the Abpromise,

please visit <https://www.abcam.com/abpromise> or contact our technical team.

Terms and conditions

- Guarantee only valid for products bought direct from Abcam or one of our authorized distributors